

**(DANRE) atg5 Antibody (Center)**  
**Purified Rabbit Polyclonal Antibody (Pab)**  
**Catalog # AP21165a**

## Specification

---

### (DANRE) atg5 Antibody (Center) - Product Information

Application	WB,E
Primary Accession	<a href="#">Q6DEM4</a>
Reactivity	Human
Host	Rabbit
Clonality	polyclonal
Isotype	Rabbit IgG

### (DANRE) atg5 Antibody (Center) - Additional Information

#### Target/Specificity

This (DANRE) atg5 antibody is generated from a rabbit immunized with a KLH conjugated synthetic peptide between 128-160 amino acids from the Central region of DANRE atg5.

#### Dilution

WB~~1:1000

#### Format

Purified polyclonal antibody supplied in PBS with 0.09% (W/V) sodium azide. This antibody is purified through a protein A column, followed by peptide affinity purification.

#### Storage

Maintain refrigerated at 2-8°C for up to 2 weeks. For long term storage store at -20°C in small aliquots to prevent freeze-thaw cycles.

#### Precautions

(DANRE) atg5 Antibody (Center) is for research use only and not for use in diagnostic or therapeutic procedures.

### (DANRE) atg5 Antibody (Center) - Protein Information

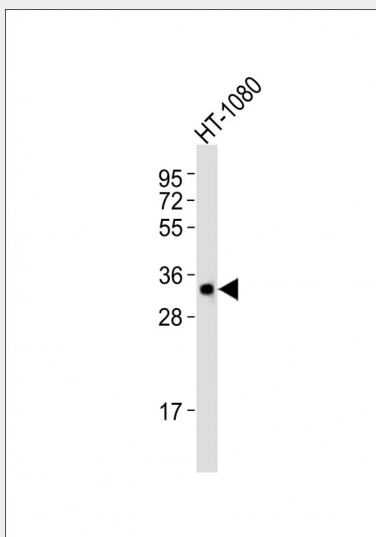
### (DANRE) atg5 Antibody (Center) - Protocols

Provided below are standard protocols that you may find useful for product applications.

- [Western Blot](#)
- [Blocking Peptides](#)
- [Dot Blot](#)
- [Immunohistochemistry](#)
- [Immunofluorescence](#)
- [Immunoprecipitation](#)

- [Flow Cytometry](#)
- [Cell Culture](#)

**(DANRE) atg5 Antibody (Center) - Images**



Anti-(DANRE) atg5 Antibody (Center) at 1:1000 dilution + HT-1080 whole cell lysates  
Lysates/proteins at 20 µg per lane. Secondary Goat Anti-Rabbit IgG, (H+L), Peroxidase conjugated  
at 1/10000 dilution Predicted band size : 32 kDa Blocking/Dilution buffer: 5% NFDM/TBST.