

**(DANRE) mtmr14 Antibody (C-Term)**  
**Purified Rabbit Polyclonal Antibody (Pab)**  
**Catalog # AP21142a**

**Specification**

---

**(DANRE) mtmr14 Antibody (C-Term) - Product Information**

Application	WB,E
Primary Accession	<a href="#">E7F0C5</a>
Reactivity	Zebrafish
Host	Rabbit
Clonality	polyclonal
Isotype	Rabbit IgG
Calculated MW	70717
Antigen Region	614-647

**(DANRE) mtmr14 Antibody (C-Term) - Additional Information**

**Gene ID** 323929

**Target/Specificity**

This danre mtmr14 antibody is generated from a rabbit immunized with a KLH conjugated synthetic peptide between 614-647 amino acids from the danre region of danre mtmr14.

**Dilution**

WB~~1:1000

**Format**

Purified polyclonal antibody supplied in PBS with 0.09% (W/V) sodium azide. This antibody is purified through a protein A column, followed by peptide affinity purification.

**Storage**

Maintain refrigerated at 2-8°C for up to 2 weeks. For long term storage store at -20°C in small aliquots to prevent freeze-thaw cycles.

**Precautions**

(DANRE) mtmr14 Antibody (C-Term) is for research use only and not for use in diagnostic or therapeutic procedures.

**(DANRE) mtmr14 Antibody (C-Term) - Protein Information**

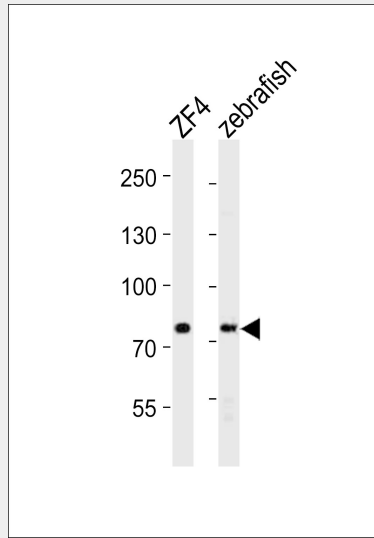
**Name** E7F0C5

**(DANRE) mtmr14 Antibody (C-Term) - Protocols**

Provided below are standard protocols that you may find useful for product applications.

- [Western Blot](#)
- [Blocking Peptides](#)
- [Dot Blot](#)
- [Immunohistochemistry](#)
- [Immunofluorescence](#)
- [Immunoprecipitation](#)
- [Flow Cytometry](#)
- [Cell Culture](#)

#### (DANRE) mtmr14 Antibody (C-Term) - Images



Western blot analysis of lysates from zebra fish ZF4 cell line, zebrafish tissue lysate (from left to right), using (DANRE) mtmr14 Antibody (C-Term) (Cat. #AP21142a). AP21142a was diluted at 1:1000 at each lane. A goat anti-rabbit IgG H&L (HRP) at 1:10000 dilution was used as the secondary antibody. Lysates at 20ug per lane.