

Mouse Noto Antibody (C-term)
Purified Rabbit Polyclonal Antibody (Pab)
Catalog # AP21141a

Specification

Mouse Noto Antibody (C-term) - Product Information

Application	WB,E
Primary Accession	Q5TIS6
Reactivity	Mouse
Host	Rabbit
Clonality	polyclonal
Isotype	Rabbit IgG
Calculated MW	26322
Antigen Region	200-234

Mouse Noto Antibody (C-term) - Additional Information

Gene ID 384452

Other Names

Homeobox protein notochord, Noto, Not

Target/Specificity

This Mouse Noto antibody is generated from a rabbit immunized with a KLH conjugated synthetic peptide between 200-234 amino acids from the C-terminal region of Mouse Noto.

Dilution

WB~~1:4000

Format

Purified polyclonal antibody supplied in PBS with 0.09% (W/V) sodium azide. This antibody is purified through a protein A column, followed by peptide affinity purification.

Storage

Maintain refrigerated at 2-8°C for up to 2 weeks. For long term storage store at -20°C in small aliquots to prevent freeze-thaw cycles.

Precautions

Mouse Noto Antibody (C-term) is for research use only and not for use in diagnostic or therapeutic procedures.

Mouse Noto Antibody (C-term) - Protein Information

Name Noto

Synonyms Not

Function Transcription factor that controls node morphogenesis (PubMed:[15231714](#),

PubMed:[17884984](#), PubMed:[18061569](#), PubMed:[22357932](#)). Acts downstream of both FOXA2 and Brachyury (T) during notochord development (PubMed:[15231714](#)). Is essential for cilia formation in the posterior notochord (PNC) and for left-right patterning; acts upstream of FOXJ1 and RFX3 in this process and is required for the expression of various components important for axonemal assembly and function (PubMed:[17884984](#)). Plays a role in regulating axial versus paraxial cell fate (PubMed:[18061569](#)). Activates the transcription of ciliary proteins C11orf97 homolog, FAM183B and SPACA9 in the embryonic ventral node (PubMed:[27914912](#)).

Cellular Location

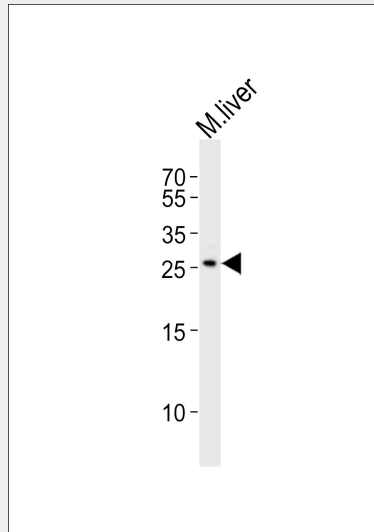
Nucleus {ECO:0000255|PROSITE-ProRule:PRU00108}.

Mouse Noto Antibody (C-term) - Protocols

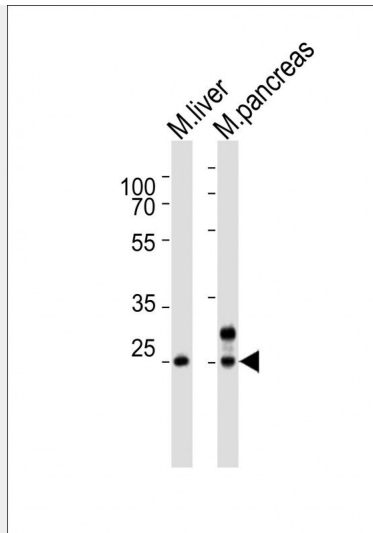
Provided below are standard protocols that you may find useful for product applications.

- [Western Blot](#)
- [Blocking Peptides](#)
- [Dot Blot](#)
- [Immunohistochemistry](#)
- [Immunofluorescence](#)
- [Immunoprecipitation](#)
- [Flow Cytometry](#)
- [Cell Culture](#)

Mouse Noto Antibody (C-term) - Images



Western blot analysis of lysate from mouse liver tissue lysate, using Noto Antibody (C-term)(Cat. #AP21141a). AP21141a was diluted at 1:2000. A goat anti-rabbit IgG H&L(HRP) at 1:10000 dilution was used as the secondary antibody. Lysate at 20ug.



Western blot analysis of lysates from mouse liver, mouse pancreas tissue lysate (from left to right), using Noto Antibody (C-term)(Cat. #AP21141a). AP21141a was diluted at 1:4000 at each lane. A goat anti-rabbit IgG H&L(HRP) at 1:10000 dilution was used as the secondary antibody. Lysates at 20ug per lane.

Mouse Noto Antibody (C-term) - Background

Transcription regulator acting downstream of both FOXA2 and T during notochord development. Required for node morphogenesis. Is essential for cilia formation in the posterior notochord (PNC) and for left-right patterning; acts upstream of FOXJ1 and RFX3 in this process and is required for the expression of various components important for axonemal assembly and function. Plays a role in regulating axial versus paraxial cell fate.

Mouse Noto Antibody (C-term) - References

- Ben Abdelkhalek H.,et al.Genes Dev. 18:1725-1736(2004).
- Carninci P.,et al.Science 309:1559-1563(2005).
- Yamanaka Y.,et al.Dev. Cell 13:884-896(2007).
- Beckers A.,et al.Proc. Natl. Acad. Sci. U.S.A. 104:15765-15770(2007).