

**ADORA2A Antibody (C-term)**  
**Purified Rabbit Polyclonal Antibody (Pab)**  
**Catalog # AP21140a**

**Specification**

---

**ADORA2A Antibody (C-term) - Product Information**

Application	WB, IHC-P, FC,E
Primary Accession	<a href="#">P29274</a>
Reactivity	Human
Host	Rabbit
Clonality	polyclonal
Isotype	Rabbit IgG
Calculated MW	44707

**ADORA2A Antibody (C-term) - Additional Information**

**Gene ID** 135

**Other Names**

Adenosine receptor A2a, ADORA2A, ADORA2

**Target/Specificity**

This ADORA2A antibody is generated from a rabbit immunized with a KLH conjugated synthetic peptide between 347-381 amino acids from the C-terminal region of human ADORA2A.

**Dilution**

WB~~1:1000

IHC-P~~1:25

FC~~1:25

**Format**

Purified polyclonal antibody supplied in PBS with 0.09% (W/V) sodium azide. This antibody is purified through a protein A column, followed by peptide affinity purification.

**Storage**

Maintain refrigerated at 2-8°C for up to 2 weeks. For long term storage store at -20°C in small aliquots to prevent freeze-thaw cycles.

**Precautions**

ADORA2A Antibody (C-term) is for research use only and not for use in diagnostic or therapeutic procedures.

**ADORA2A Antibody (C-term) - Protein Information**

**Name** ADORA2A

**Synonyms** ADORA2

**Function** Receptor for adenosine (By similarity). The activity of this receptor is mediated by G proteins which activate adenylyl cyclase (By similarity).

#### Cellular Location

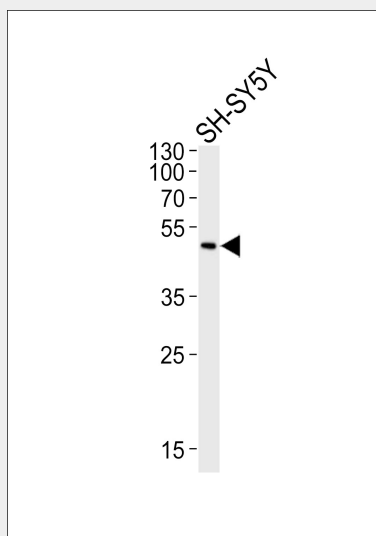
Cell membrane {ECO:0000250|UniProtKB:P30543}; Multi-pass membrane protein {ECO:0000250|UniProtKB:P30543} Note=Colocalizes with GAS2L2 at neuronal processes {ECO:0000250|UniProtKB:P30543}

#### ADORA2A Antibody (C-term) - Protocols

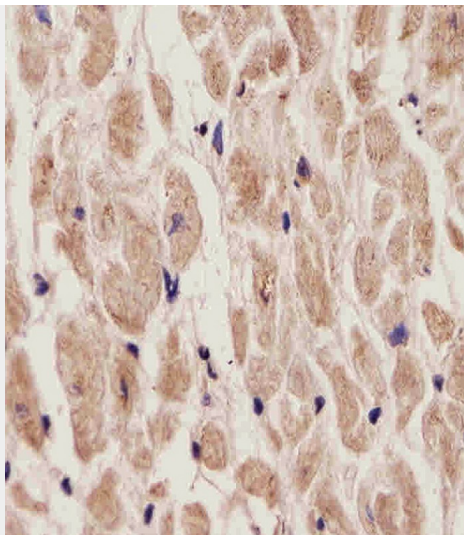
Provided below are standard protocols that you may find useful for product applications.

- [Western Blot](#)
- [Blocking Peptides](#)
- [Dot Blot](#)
- [Immunohistochemistry](#)
- [Immunofluorescence](#)
- [Immunoprecipitation](#)
- [Flow Cytometry](#)
- [Cell Culture](#)

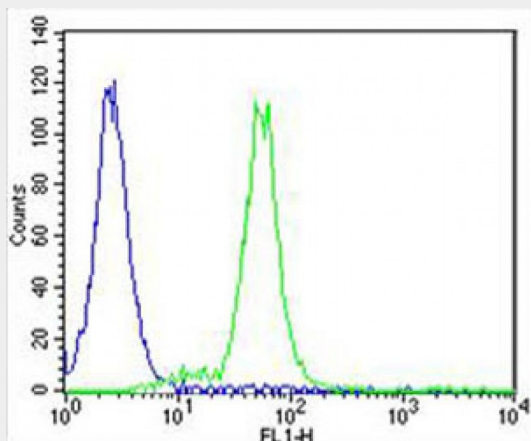
#### ADORA2A Antibody (C-term) - Images



Western blot analysis of lysate from SH-SY5Y cell line, using ADORA2A Antibody (C-term)(Cat. #AP21140a). AP21140a was diluted at 1:1000. A goat anti-rabbit IgG H&L(HRP) at 1:10000 dilution was used as the secondary antibody. Lysate at 20ug.



AP21140a staining ADORA2A in Human heart tissue sections by Immunohistochemistry (IHC-P - paraformaldehyde-fixed, paraffin-embedded sections). Tissue was fixed with formaldehyde and blocked with 3% BSA for 0.5 hour at room temperature; antigen retrieval was by heat mediation with a citrate buffer (pH6). Samples were incubated with primary antibody (1/25) for 1 hour at 37°C. A undiluted biotinylated goat polyvalent antibody was used as the secondary antibody.



Overlay histogram showing SH-SY5Y cells stained with AP21140a (green line). The cells were fixed with 4% paraformaldehyde (10 min) and then permeabilized with 90% methanol for 10 min. The cells were then incubated in 2% bovine serum albumin to block non-specific protein-protein interactions followed by the antibody (AP21140a, 1:25 dilution) for 60 min at 37°C. The secondary antibody used was Alexa Fluor® 488 goat anti-rabbit IgG (H+L) (1583138) at 1/400 dilution for 40 min at 37°C. Isotype control antibody (blue line) was rabbit IgG1 (1µg/1x10<sup>6</sup> cells) used under the same conditions. Acquisition of >10,000 events was performed.

#### **ADORA2A Antibody (C-term) - Background**

Receptor for adenosine. The activity of this receptor is mediated by G proteins which activate adenylyl cyclase.

#### **ADORA2A Antibody (C-term) - References**

- Tiffany H.L., et al. Submitted (JUL-1992) to the EMBL/GenBank/DDBJ databases.
- Salvatore C.A., et al. Submitted (SEP-1992) to the EMBL/GenBank/DDBJ databases.
- Furlong T.J., et al. Brain Res. Mol. Brain Res. 15:62-66(1992).
- Le F., et al. Biochem. Biophys. Res. Commun. 223:461-467(1996).

Puhl H.L. III, et al. Submitted (JUL-2002) to the EMBL/GenBank/DDBJ databases.