

**B4GALT7 Antibody (C-term)**  
**Purified Rabbit Polyclonal Antibody (Pab)**  
**Catalog # AP21133a**

**Specification**

---

**B4GALT7 Antibody (C-term) - Product Information**

Application	WB,E
Primary Accession	<a href="#">O9UBV7</a>
Other Accession	<a href="#">O8R087</a>
Reactivity	Human, Mouse
Host	Rabbit
Clonality	polyclonal
Isotype	Rabbit IgG
Calculated MW	37406
Antigen Region	256-290

**B4GALT7 Antibody (C-term) - Additional Information**

**Gene ID** 11285

**Other Names**

Beta-1, 4-galactosyltransferase 7, Beta-1, 4-GalTase 7, Beta4Gal-T7, b4Gal-T7, 241-, UDP-Gal:beta-GlcNAc beta-1, 4-galactosyltransferase 7, UDP-galactose:beta-N-acetylglucosamine beta-1, 4-galactosyltransferase 7, Xylosylprotein 4-beta-galactosyltransferase, Proteoglycan UDP-galactose:beta-xylose beta1, 4-galactosyltransferase I, UDP-galactose:beta-xylose beta-1, 4-galactosyltransferase, XGPT, XGalT-1, Xylosylprotein beta-1, 4-galactosyltransferase, B4GALT7, XGALT1

**Target/Specificity**

This B4GALT7 antibody is generated from a rabbit immunized with a KLH conjugated synthetic peptide between 256-290 amino acids from the C-terminal region of human B4GALT7.

**Dilution**

WB~~1:2000

**Format**

Purified polyclonal antibody supplied in PBS with 0.09% (W/V) sodium azide. This antibody is purified through a protein A column, followed by peptide affinity purification.

**Storage**

Maintain refrigerated at 2-8°C for up to 2 weeks. For long term storage store at -20°C in small aliquots to prevent freeze-thaw cycles.

**Precautions**

B4GALT7 Antibody (C-term) is for research use only and not for use in diagnostic or therapeutic procedures.

**B4GALT7 Antibody (C-term) - Protein Information**

**Name** B4GALT7

**Synonyms** XGALT1

**Function** Required for the biosynthesis of the tetrasaccharide linkage region of proteoglycans, especially for small proteoglycans in skin fibroblasts.

**Cellular Location**

Golgi apparatus, Golgi stack membrane; Single- pass type II membrane protein. Note=Cis cisternae of Golgi stack

**Tissue Location**

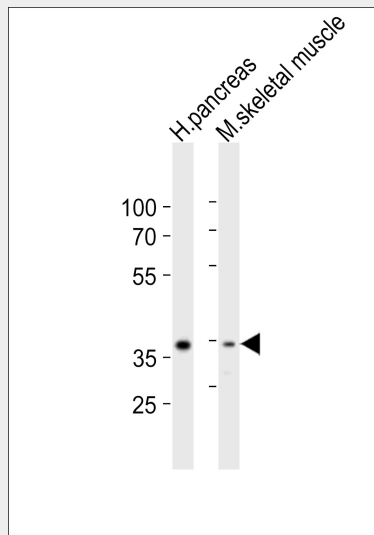
High expression in heart, pancreas and liver, medium in placenta and kidney, low in brain, skeletal muscle and lung

**B4GALT7 Antibody (C-term) - Protocols**

Provided below are standard protocols that you may find useful for product applications.

- [Western Blot](#)
- [Blocking Peptides](#)
- [Dot Blot](#)
- [Immunohistochemistry](#)
- [Immunofluorescence](#)
- [Immunoprecipitation](#)
- [Flow Cytometry](#)
- [Cell Culture](#)

**B4GALT7 Antibody (C-term) - Images**



Western blot analysis of lysates from human pancreas, mouse skeletal muscle tissue lysate (from left to right), using B4GALT7 Antibody (C-term)(Cat. #AP21133a). AP21133a was diluted at 1:2000 at each lane. A goat anti-rabbit IgG H&L(HRP) at 1:10000 dilution was used as the secondary antibody. Lysates at 20ug per lane.

**B4GALT7 Antibody (C-term) - Background**

Required for the biosynthesis of the tetrasaccharide linkage region of proteoglycans, especially for small proteoglycans in skin fibroblasts.

#### **B4GALT7 Antibody (C-term) - References**

- Almeida R., et al. J. Biol. Chem. 274:26165-26171(1999).  
Okajima T., et al. J. Biol. Chem. 274:22915-22918(1999).  
Lo N.-W., et al. Submitted (APR-1999) to the EMBL/GenBank/DDBJ databases.  
Clark H.F., et al. Genome Res. 13:2265-2270(2003).  
Ota T., et al. Nat. Genet. 36:40-45(2004).