

**CD34 Antibody (C-term)**  
**Purified Rabbit Polyclonal Antibody (Pab)**  
**Catalog # AP21126a**

**Specification**

---

**CD34 Antibody (C-term) - Product Information**

Application	<b>WB, FC,E</b>
Primary Accession	<a href="#">P28906</a>
Reactivity	<b>Human</b>
Host	<b>Rabbit</b>
Clonality	<b>polyclonal</b>
Isotype	<b>Rabbit IgG</b>
Calculated MW	<b>40716</b>

**CD34 Antibody (C-term) - Additional Information**

**Gene ID** 947

**Other Names**

Hematopoietic progenitor cell antigen CD34, CD34, CD34

**Target/Specificity**

This CD34 antibody is generated from a rabbit immunized with a KLH conjugated synthetic peptide between 356-390 amino acids from the C-terminal region of human CD34.

**Dilution**

WB~~1:1000

FC~~1:25

**Format**

Purified polyclonal antibody supplied in PBS with 0.09% (W/V) sodium azide. This antibody is purified through a protein A column, followed by peptide affinity purification.

**Storage**

Maintain refrigerated at 2-8°C for up to 2 weeks. For long term storage store at -20°C in small aliquots to prevent freeze-thaw cycles.

**Precautions**

CD34 Antibody (C-term) is for research use only and not for use in diagnostic or therapeutic procedures.

**CD34 Antibody (C-term) - Protein Information**

**Name** CD34

**Function** Possible adhesion molecule with a role in early hematopoiesis by mediating the attachment of stem cells to the bone marrow extracellular matrix or directly to stromal cells. Could act as a scaffold for the attachment of lineage specific glycans, allowing stem cells to bind to

lectins expressed by stromal cells or other marrow components. Presents carbohydrate ligands to selectins.

#### Cellular Location

Membrane; Single-pass type I membrane protein.

#### Tissue Location

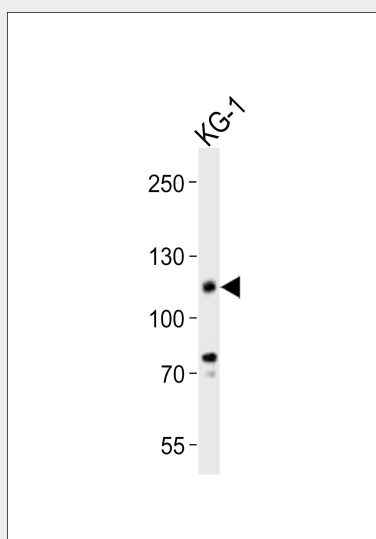
Selectively expressed on hematopoietic progenitor cells and the small vessel endothelium of a variety of tissues

### CD34 Antibody (C-term) - Protocols

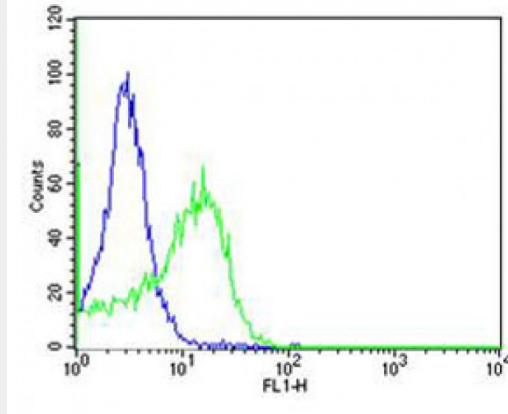
Provided below are standard protocols that you may find useful for product applications.

- [Western Blot](#)
- [Blocking Peptides](#)
- [Dot Blot](#)
- [Immunohistochemistry](#)
- [Immunofluorescence](#)
- [Immunoprecipitation](#)
- [Flow Cytometry](#)
- [Cell Culture](#)

### CD34 Antibody (C-term) - Images



Western blot analysis of lysate from KG-1 cell line, using CD34 Antibody (C-term)(Cat. #AP21126a). AP21126a was diluted at 1:1000. A goat anti-rabbit IgG H&L(HRP) at 1:10000 dilution was used as the secondary antibody. Lysate at 20ug.



Flow cytometric analysis of HT-29 cells using CD34 Antibody (C-term)(green, Cat#) compared to an isotype control of rabbit IgG(blue). was diluted at 1:25 dilution. An Alexa Fluor® 488 goat anti-rabbit IgG at 1:400 dilution was used as the secondary antibody.

#### **CD34 Antibody (C-term) - Background**

Possible adhesion molecule with a role in early hematopoiesis by mediating the attachment of stem cells to the bone marrow extracellular matrix or directly to stromal cells. Could act as a scaffold for the attachment of lineage specific glycans, allowing stem cells to bind to lectins expressed by stromal cells or other marrow components. Presents carbohydrate ligands to selectins.

#### **CD34 Antibody (C-term) - References**

Simmons D.L.,et al.J. Immunol. 148:267-271(1992).  
Satterthwaite A.B.,et al.Genomics 12:788-794(1992).  
Nakamura Y.,et al.Exp. Hematol. 21:236-242(1993).  
Freund D.,et al.Submitted (JUN-2002) to the EMBL/GenBank/DDBJ databases.  
Ota T.,et al.Nat. Genet. 36:40-45(2004).