

**COG1 Antibody (C-term)**  
**Purified Rabbit Polyclonal Antibody (Pab)**  
**Catalog # AP21124a**

**Specification**

---

**COG1 Antibody (C-term) - Product Information**

Application	<b>WB,E</b>
Primary Accession	<a href="#">Q8WTW3</a>
Reactivity	<b>Human</b>
Host	<b>Rabbit</b>
Clonality	<b>polyclonal</b>
Isotype	<b>Rabbit IgG</b>
Calculated MW	<b>108978</b>

**COG1 Antibody (C-term) - Additional Information**

**Gene ID** 9382

**Other Names**

Conserved oligomeric Golgi complex subunit 1, COG complex subunit 1, Component of oligomeric Golgi complex 1, COG1, KIAA1381, LDLB

**Target/Specificity**

This COG1 antibody is generated from a rabbit immunized with a KLH conjugated synthetic peptide between 887-920 amino acids from the C-terminal region of human COG1.

**Dilution**

WB~~1:1000

**Format**

Purified polyclonal antibody supplied in PBS with 0.09% (W/V) sodium azide. This antibody is purified through a protein A column, followed by peptide affinity purification.

**Storage**

Maintain refrigerated at 2-8°C for up to 2 weeks. For long term storage store at -20°C in small aliquots to prevent freeze-thaw cycles.

**Precautions**

COG1 Antibody (C-term) is for research use only and not for use in diagnostic or therapeutic procedures.

**COG1 Antibody (C-term) - Protein Information**

**Name** COG1

**Synonyms** KIAA1381, LDLB

**Function** Required for normal Golgi function.

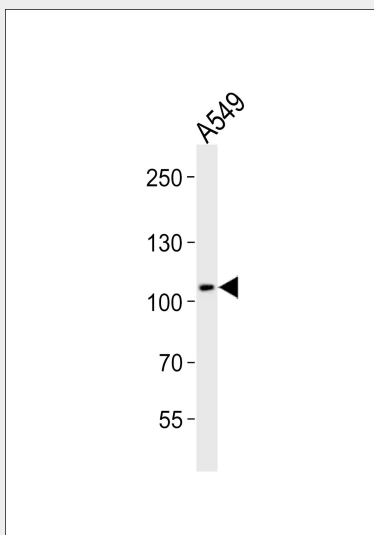
**Cellular Location**

Golgi apparatus membrane; Peripheral membrane protein; Cytoplasmic side

**COG1 Antibody (C-term) - Protocols**

Provided below are standard protocols that you may find useful for product applications.

- [Western Blot](#)
- [Blocking Peptides](#)
- [Dot Blot](#)
- [Immunohistochemistry](#)
- [Immunofluorescence](#)
- [Immunoprecipitation](#)
- [Flow Cytometry](#)
- [Cell Culture](#)

**COG1 Antibody (C-term) - Images**

Western blot analysis of lysate from A549 cell line, using COG1 Antibody (C-term)(Cat. #AP21124a). AP21124a was diluted at 1:1000. A goat anti-rabbit IgG H&L(HRP) at 1:10000 dilution was used as the secondary antibody. Lysate at 20ug.

**COG1 Antibody (C-term) - Background**

Required for normal Golgi function (By similarity).

**COG1 Antibody (C-term) - References**

- Nagase T.,et al.DNA Res. 7:65-73(2000).  
Bechtel S.,et al.BMC Genomics 8:399-399(2007).  
Ungar D.,et al.J. Cell Biol. 157:405-415(2002).  
Foulquier F.,et al.Proc. Natl. Acad. Sci. U.S.A. 103:3764-3769(2006).  
Daub H.,et al.Mol. Cell 31:438-448(2008).