

**UBE4B Antibody (N-term)**  
**Purified Rabbit Polyclonal Antibody (Pab)**  
**Catalog # AP2111a**

**Specification**

---

**UBE4B Antibody (N-term) - Product Information**

Application	WB, IHC-P-Leica,E
Primary Accession	<a href="#">O95155</a>
Other Accession	<a href="#">O9ES00</a>
Reactivity	Human, Mouse
Host	Rabbit
Clonality	Polyclonal
Isotype	Rabbit IgG
Antigen Region	112-142

**UBE4B Antibody (N-term) - Additional Information**

**Gene ID** 10277

**Other Names**

Ubiquitin conjugation factor E4 B, 632-, UBE4B ([HGNC:12500](http://www.genenames.org/cgi-bin/gene_symbol_report?hgnc_id=12500))

**Target/Specificity**

This UBE4B antibody is generated from rabbits immunized with a KLH conjugated synthetic peptide between 112-142 amino acids from the N-terminal region of human UBE4B.

**Dilution**

WB~~1:1000  
IHC-P-Leica~~1:500

**Format**

Purified polyclonal antibody supplied in PBS with 0.09% (W/V) sodium azide. This antibody is purified through a protein A column, followed by peptide affinity purification.

**Storage**

Maintain refrigerated at 2-8°C for up to 2 weeks. For long term storage store at -20°C in small aliquots to prevent freeze-thaw cycles.

**Precautions**

UBE4B Antibody (N-term) is for research use only and not for use in diagnostic or therapeutic procedures.

**UBE4B Antibody (N-term) - Protein Information**

**Name** UBE4B ([HGNC:12500](#))

**Function** Ubiquitin-protein ligase that probably functions as an E3 ligase in conjunction with specific E1 and E2 ligases (By similarity). May also function as an E4 ligase mediating the assembly of polyubiquitin chains on substrates ubiquitinated by another E3 ubiquitin ligase (By similarity). May regulate myosin assembly in striated muscles together with STUB1 and VCP/p97 by targeting myosin chaperone UNC45B for proteasomal degradation (PubMed:[17369820](#)).

**Cellular Location**

Cytoplasm. Nucleus {ECO:0000250|UniProtKB:Q9ES00}

**Tissue Location**

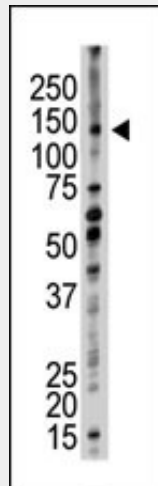
Expressed in differentiated myotubes (at protein level) (PubMed:17369820). Highest expression in ovary, testis, heart and skeletal muscle (PubMed:11802788). Expression is low in colon, thymus and peripheral blood leukocytes (PubMed:11802788). Almost undetectable in lung and spleen (PubMed:11802788)

**UBE4B Antibody (N-term) - Protocols**

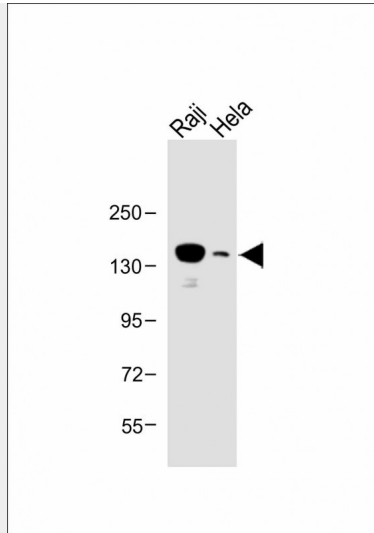
Provided below are standard protocols that you may find useful for product applications.

- [Western Blot](#)
- [Blocking Peptides](#)
- [Dot Blot](#)
- [Immunohistochemistry](#)
- [Immunofluorescence](#)
- [Immunoprecipitation](#)
- [Flow Cytometry](#)
- [Cell Culture](#)

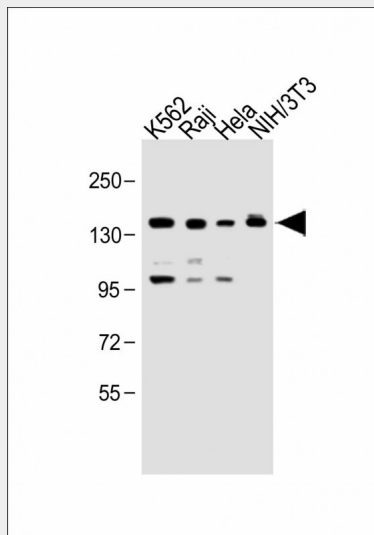
**UBE4B Antibody (N-term) - Images**



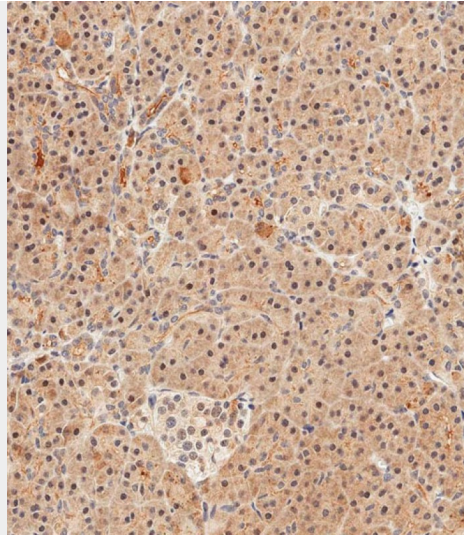
The anti-UBE4B Pab (Cat. #AP2111a) is used in Western blot to detect UBE4B in mouse kidney tissue lysate.



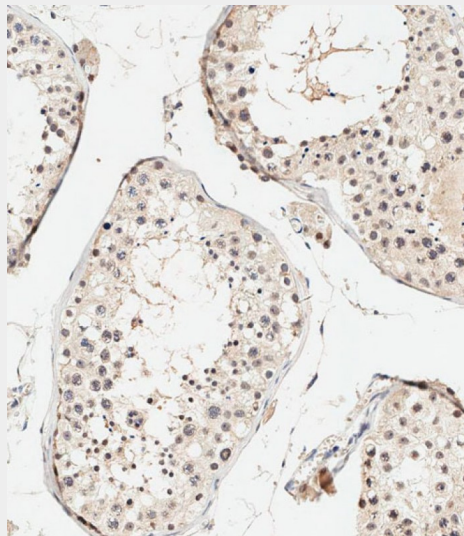
All lanes : Anti-UBE4B Antibody (N-term) at 1:1000 dilution Lane 1: Raji whole cell lysate Lane 2: HeLa whole cell lysate Lysates/proteins at 20 µg per lane. Secondary Goat Anti-Rabbit IgG, (H+L), Peroxidase conjugated at 1/10000 dilution. Predicted band size : 146 kDa Blocking/Dilution buffer: 5% NFDm/TBST.



All lanes : Anti-UBE4B Antibody (N-term) at 1:1000 dilution Lane 1: K562 whole cell lysate Lane 2: Raji whole cell lysate Lane 3: HeLa whole cell lysate Lane 4: NIH/3T3 whole cell lysate Lysates/proteins at 20 µg per lane. Secondary Goat Anti-Rabbit IgG, (H+L), Peroxidase conjugated at 1/10000 dilution. Predicted band size :146kDa Blocking/Dilution buffer: 5% NFDm/TBST.



Immunohistochemical analysis of paraffin-embedded human pancreas tissue using AP2111a performed on the Leica® BOND RXm. Samples were incubated with primary antibody(1/500) for 1 hours at room temperature. A undiluted biotinylated CRF Anti-Polyvalent HRP Polymer antibody was used as the secondary antibody.



Immunohistochemical analysis of paraffin-embedded human testis tissue using AP2111a performed on the Leica® BOND RXm. Samples were incubated with primary antibody(1/500) for 1 hours at room temperature. A undiluted biotinylated CRF Anti-Polyvalent HRP Polymer antibody was used as the secondary antibody.

#### **UBE4B Antibody (N-term) - Background**

The modification of proteins with ubiquitin is an important cellular mechanism for targeting abnormal or short-lived proteins for degradation. Ubiquitination involves at least three classes of enzymes: ubiquitin-activating enzymes, or E1s, ubiquitin-conjugating enzymes, or E2s, and ubiquitin-protein ligases, or E3s. UBE4B represents an additional conjugation factor, E4, which is involved in multiubiquitin chain assembly. UBE4B also the strongest candidate among the neuroblastoma tumor suppressors.

#### **UBE4B Antibody (N-term) - References**

Ishikawa, K., et al., DNA Res. 5(3):169-176 (1998).

Mahoney, J.A., et al., *Biochem. J.* 361 (Pt 3), 587-595 (2002).