

**POU5F1 Antibody (Center)**  
**Purified Rabbit Polyclonal Antibody (Pab)**  
**Catalog # AP21116a**

**Specification**

---

**POU5F1 Antibody (Center) - Product Information**

Application	WB,E
Primary Accession	<a href="#">Q01860</a>
Reactivity	Human
Host	Rabbit
Clonality	Polyclonal
Isotype	Rabbit IgG
Calculated MW	38571

**POU5F1 Antibody (Center) - Additional Information**

**Gene ID** 5460

**Other Names**

POU domain, class 5, transcription factor 1, Octamer-binding protein 3, Oct-3, Octamer-binding protein 4, Oct-4, Octamer-binding transcription factor 3, OTF-3, POU5F1, OCT3, OCT4, OTF3

**Target/Specificity**

This POU5F1 antibody is generated from a rabbit immunized with a KLH conjugated synthetic peptide between 123-157 amino acids from the Central region of human POU5F1.

**Dilution**

WB~~1:1000

**Format**

Purified polyclonal antibody supplied in PBS with 0.09% (W/V) sodium azide. This antibody is purified through a protein A column, followed by peptide affinity purification.

**Storage**

Maintain refrigerated at 2-8°C for up to 2 weeks. For long term storage store at -20°C in small aliquots to prevent freeze-thaw cycles.

**Precautions**

POU5F1 Antibody (Center) is for research use only and not for use in diagnostic or therapeutic procedures.

**POU5F1 Antibody (Center) - Protein Information**

**Name** POU5F1

**Synonyms** OCT3, OCT4, OTF3

**Function** Transcription factor that binds to the octamer motif (5'- ATTTGCAT-3'). Forms a trimeric

complex with SOX2 or SOX15 on DNA and controls the expression of a number of genes involved in embryonic development such as YES1, FGF4, UTF1 and ZFP206. Critical for early embryogenesis and for embryonic stem cell pluripotency.

#### Cellular Location

Cytoplasm. Nucleus. Note=Expressed in a diffuse and slightly punctuate pattern. Colocalizes with MAPK8 and MAPK9 in the nucleus. {ECO:0000250|UniProtKB:P20263, ECO:0000269|PubMed:18191611, ECO:0000269|PubMed:19274063, ECO:0000269|PubMed:23024368}

#### Tissue Location

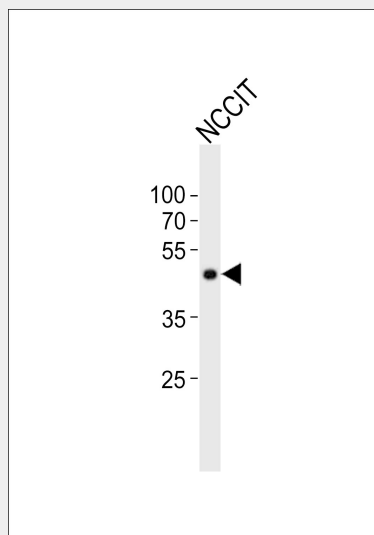
Expressed in developing brain. Highest levels found in specific cell layers of the cortex, the olfactory bulb, the hippocampus and the cerebellum. Low levels of expression in adult tissues.

### POU5F1 Antibody (Center) - Protocols

Provided below are standard protocols that you may find useful for product applications.

- [Western Blot](#)
- [Blocking Peptides](#)
- [Dot Blot](#)
- [Immunohistochemistry](#)
- [Immunofluorescence](#)
- [Immunoprecipitation](#)
- [Flow Cytometry](#)
- [Cell Culture](#)

### POU5F1 Antibody (Center) - Images



Western blot analysis of lysate from NCCIT cell line, using POU5F1 Antibody (Center)(Cat. #AP21116a). AP21116a was diluted at 1:1000. A goat anti-rabbit IgG H&L(HRP) at 1:10000 dilution was used as the secondary antibody. Lysate at 20ug.

### POU5F1 Antibody (Center) - Background

Transcription factor that binds to the octamer motif (5'-ATTTGCAT-3'). Forms a trimeric complex with SOX2 on DNA and controls the expression of a number of genes involved in embryonic

development such as YES1, FGF4, UTF1 and ZFP206. Critical for early embryogenesis and for embryonic stem cell pluripotency.

#### **POU5F1 Antibody (Center) - References**

Takeda J., et al. *Nucleic Acids Res.* 20:4613-4620(1992).

Stuart P.E., et al. *Tissue Antigens* 76:387-397(2010).

Shiina T., et al. *Genetics* 173:1555-1570(2006).

Shiina S., et al. Submitted (SEP-1999) to the EMBL/GenBank/DDBJ databases.

Mungall A.J., et al. *Nature* 425:805-811(2003).