

(DANRE) hbae1 Antibody (Center)
Purified Rabbit Polyclonal Antibody (Pab)
Catalog # AP21112a

Specification

(DANRE) hbae1 Antibody (Center) - Product Information

Application	WB,E
Primary Accession	Q7ZT21
Reactivity	Zebrafish
Host	Rabbit
Clonality	Polyclonal
Isotype	Rabbit IgG
Calculated MW	15588
Antigen Region	46-80

(DANRE) hbae1 Antibody (Center) - Additional Information

Gene ID 100334599;30597;572729

Target/Specificity

This DANRE hbae1 antibody is generated from a rabbit immunized with a KLH conjugated synthetic peptide between 46-80 amino acids from the Central region of DANRE hbae1.

Dilution

WB~~1:1000

Format

Purified polyclonal antibody supplied in PBS with 0.09% (W/V) sodium azide. This antibody is purified through a protein A column, followed by peptide affinity purification.

Storage

Maintain refrigerated at 2-8°C for up to 2 weeks. For long term storage store at -20°C in small aliquots to prevent freeze-thaw cycles.

Precautions

(DANRE) hbae1 Antibody (Center) is for research use only and not for use in diagnostic or therapeutic procedures.

(DANRE) hbae1 Antibody (Center) - Protein Information

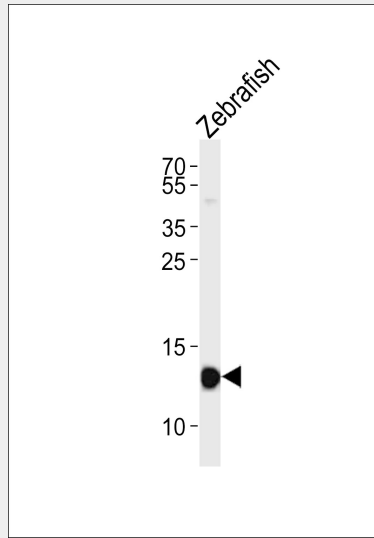
Name Q7ZT21

(DANRE) hbae1 Antibody (Center) - Protocols

Provided below are standard protocols that you may find useful for product applications.

- [Western Blot](#)
- [Blocking Peptides](#)
- [Dot Blot](#)
- [Immunohistochemistry](#)
- [Immunofluorescence](#)
- [Immunoprecipitation](#)
- [Flow Cytometry](#)
- [Cell Culture](#)

(DANRE) hbae1 Antibody (Center) - Images



Western blot analysis of lysate from Zebrafish tissue lysate, using (DANRE) hbae1 Antibody (Center)(Cat. #AP21112a). AP21112a was diluted at 1:1000. A goat anti-rabbit IgG H&L(HRP) at 1:10000 dilution was used as the secondary antibody. Lysate at 20ug.