

**LMCD1 Antibody (C-term)**  
**Purified Rabbit Polyclonal Antibody (Pab)**  
**Catalog # AP21108a**

**Specification**

---

**LMCD1 Antibody (C-term) - Product Information**

Application	WB,E
Primary Accession	<a href="#">O9NZU5</a>
Reactivity	Human, Mouse, Rat
Host	Rabbit
Clonality	Polyclonal
Isotype	Rabbit IgG
Calculated MW	40833
Antigen Region	316-350

**LMCD1 Antibody (C-term) - Additional Information**

**Gene ID** 29995

**Other Names**

LIM and cysteine-rich domains protein 1, Dyxin, LMCD1

**Target/Specificity**

This LMCD1 antibody is generated from a rabbit immunized with a KLH conjugated synthetic peptide between 316-350 amino acids from the C-terminal region of human LMCD1.

**Dilution**

WB~~1:1000

**Format**

Purified polyclonal antibody supplied in PBS with 0.09% (W/V) sodium azide. This antibody is purified through a protein A column, followed by peptide affinity purification.

**Storage**

Maintain refrigerated at 2-8°C for up to 2 weeks. For long term storage store at -20°C in small aliquots to prevent freeze-thaw cycles.

**Precautions**

LMCD1 Antibody (C-term) is for research use only and not for use in diagnostic or therapeutic procedures.

**LMCD1 Antibody (C-term) - Protein Information**

**Name** LMCD1

**Function** Transcriptional cofactor that restricts GATA6 function by inhibiting DNA-binding, resulting in repression of GATA6 transcriptional activation of downstream target genes. Represses GATA6- mediated trans activation of lung- and cardiac tissue-specific promoters. Inhibits

DNA-binding by GATA4 and GATA1 to the cTNC promoter (By similarity). Plays a critical role in the development of cardiac hypertrophy via activation of calcineurin/nuclear factor of activated T-cells signaling pathway.

#### Cellular Location

Cytoplasm. Nucleus. Note=May shuttle between the cytoplasm and the nucleus.

#### Tissue Location

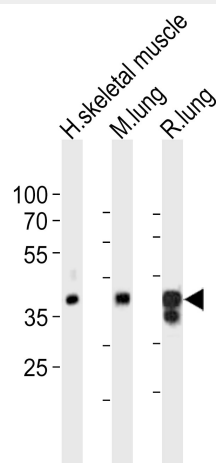
Expressed in the heart (at protein level). Expressed in many tissues with highest abundance in skeletal muscle

### LMCD1 Antibody (C-term) - Protocols

Provided below are standard protocols that you may find useful for product applications.

- [Western Blot](#)
- [Blocking Peptides](#)
- [Dot Blot](#)
- [Immunohistochemistry](#)
- [Immunofluorescence](#)
- [Immunoprecipitation](#)
- [Flow Cytometry](#)
- [Cell Culture](#)

### LMCD1 Antibody (C-term) - Images



Western blot analysis of lysates from human skeletal muscle, mouse lung, rat lung tissue lysate (from left to right), using LMCD1 Antibody (C-term)(Cat. #AP21108a). AP21108a was diluted at 1:1000 at each lane. A goat anti-rabbit IgG H&L(HRP) at 1:10000 dilution was used as the secondary antibody. Lysates at 20ug per lane.

### LMCD1 Antibody (C-term) - Background

Transcriptional cofactor that restricts GATA6 function by inhibiting DNA-binding, resulting in repression of GATA6 transcriptional activation of downstream target genes. Represses GATA6-mediated trans activation of lung- and cardiac tissue- specific promoters. Inhibits DNA-binding by GATA4 and GATA1 to the cTNC promoter (By similarity). Plays a critical role in the

development of cardiac hypertrophy via activation of calcineurin/nuclear factor of activated T-cells signaling pathway.

#### **LMCD1 Antibody (C-term) - References**

Bespalova I.N., et al. *Genomics* 63:69-74(2000).

Holt H.H., et al. Submitted (DEC-1999) to the EMBL/GenBank/DDBJ databases.

Ota T., et al. *Nat. Genet.* 36:40-45(2004).

Rath N., et al. *Mol. Cell. Biol.* 25:8864-8873(2005).

Bian Z.Y., et al. *Hypertension* 55:257-263(2010).