

**NR4A2 Antibody (Center)**  
**Purified Rabbit Polyclonal Antibody (Pab)**  
**Catalog # AP21092a**

**Specification**

---

**NR4A2 Antibody (Center) - Product Information**

|                   |  |
|-------------------|--|
| Application       | WB,E   |
| Primary Accession | <a href="#">P43354</a>   |
| Other Accession   | <a href="#">Q07917</a> , <a href="#">Q06219</a> , <a href="#">Q08E53</a> |
| Reactivity        | Human  |
| Predicted         | Bovine, Mouse, Rat   |
| Host              | Rabbit   |
| Clonality         | Polyclonal   |
| Isotype           | Rabbit IgG   |
| Calculated MW     | 66591  |

**NR4A2 Antibody (Center) - Additional Information**

**Gene ID** 4929

**Other Names**

Nuclear receptor subfamily 4 group A member 2, Immediate-early response protein NOT, Orphan nuclear receptor NURR1, Transcriptionally-inducible nuclear receptor, NR4A2, NOT, NURR1, TINUR

**Target/Specificity**

This NR4A2 antibody is generated from a rabbit immunized with a KLH conjugated synthetic peptide between 380-412 amino acids from the Central region of human NR4A2.

**Dilution**

WB~~1:1000

**Format**

Purified polyclonal antibody supplied in PBS with 0.09% (W/V) sodium azide. This antibody is purified through a protein A column, followed by peptide affinity purification.

**Storage**

Maintain refrigerated at 2-8°C for up to 2 weeks. For long term storage store at -20°C in small aliquots to prevent freeze-thaw cycles.

**Precautions**

NR4A2 Antibody (Center) is for research use only and not for use in diagnostic or therapeutic procedures.

**NR4A2 Antibody (Center) - Protein Information**

**Name** NR4A2

**Synonyms** NOT, NURR1, TINUR

**Function** Transcriptional regulator which is important for the differentiation and maintenance of meso-diencephalic dopaminergic (mdDA) neurons during development (PubMed:[15716272](#), PubMed:[17184956](#)). It is crucial for expression of a set of genes such as SLC6A3, SLC18A2, TH and DRD2 which are essential for development of mdDA neurons (By similarity).

**Cellular Location**

Cytoplasm. Nucleus. Note=Mostly nuclear; oxidative stress promotes cytoplasmic localization

**Tissue Location**

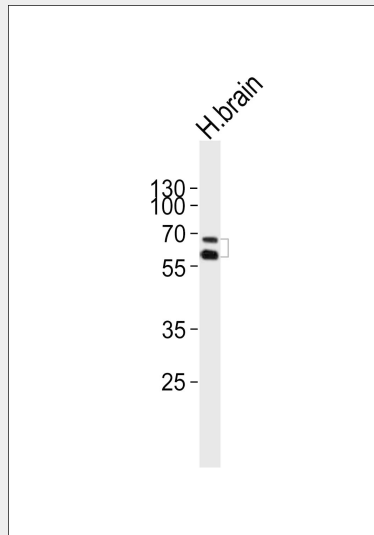
Expressed in a number of cell lines of T-cell, B- cell and fibroblast origin. Strong expression in brain tissue

**NR4A2 Antibody (Center) - Protocols**

Provided below are standard protocols that you may find useful for product applications.

- [Western Blot](#)
- [Blocking Peptides](#)
- [Dot Blot](#)
- [Immunohistochemistry](#)
- [Immunofluorescence](#)
- [Immunoprecipitation](#)
- [Flow Cytometry](#)
- [Cell Culture](#)

**NR4A2 Antibody (Center) - Images**



Western blot analysis of lysate from human brain tissue lysate, using NR4A2 Antibody (Center)(Cat. #AP21092a). AP21092a was diluted at 1:1000. A goat anti-rabbit IgG H&L(HRP) at 1:10000 dilution was used as the secondary antibody. Lysate at 20ug.

**NR4A2 Antibody (Center) - Background**

Transcriptional regulator which is important for the differentiation and maintenance of meso-diencephalic dopaminergic (mdDA) neurons during development. It is crucial for expression of a set of genes such as SLC6A3, SLC18A2, TH and DRD2 which are essential for development of mdDA neurons (By similarity).

**NR4A2 Antibody (Center) - References**

Mages H.W.,et al.Mol. Endocrinol. 8:1583-1591(1994).

Ichinose H.,et al.Gene 230:233-239(1999).

Torii T.,et al.Gene 230:225-232(1999).

Hillier L.W.,et al.Nature 434:724-731(2005).

Mural R.J.,et al.Submitted (SEP-2005) to the EMBL/GenBank/DDBJ databases.