

**(DANRE) usp13 Antibody (Center)**  
**Purified Rabbit Polyclonal Antibody (Pab)**  
**Catalog # AP21083a**

### Specification

---

#### (DANRE) usp13 Antibody (Center) - Product Information

Application	WB,E
Primary Accession	<a href="#">F1QFS9</a>
Other Accession	<a href="#">Q5BKP2</a> , <a href="#">Q92995</a> , <a href="#">E1BY77</a> , <a href="#">E1BMF7</a>
Reactivity	Zebrafish
Predicted	Bovine, Chicken, Human, Mouse
Host	Rabbit
Clonality	Polyclonal
Isotype	Rabbit IgG
Calculated MW	97452
Antigen Region	387-420

#### (DANRE) usp13 Antibody (Center) - Additional Information

**Gene ID** 558011

#### Other Names

Ubiquitin carboxyl-terminal hydrolase 13, Deubiquitinating enzyme 13, Ubiquitin thioesterase 13, Ubiquitin-specific-processing protease 13, usp13

#### Target/Specificity

This DANRE usp13 antibody is generated from a rabbit immunized with a KLH conjugated synthetic peptide between 387-420 amino acids from the Central region of DANRE usp13.

#### Dilution

WB~~1:1000

#### Format

Purified polyclonal antibody supplied in PBS with 0.09% (W/V) sodium azide. This antibody is purified through a protein A column, followed by peptide affinity purification.

#### Storage

Maintain refrigerated at 2-8°C for up to 2 weeks. For long term storage store at -20°C in small aliquots to prevent freeze-thaw cycles.

#### Precautions

(DANRE) usp13 Antibody (Center) is for research use only and not for use in diagnostic or therapeutic procedures.

#### (DANRE) usp13 Antibody (Center) - Protein Information

**Name** usp13

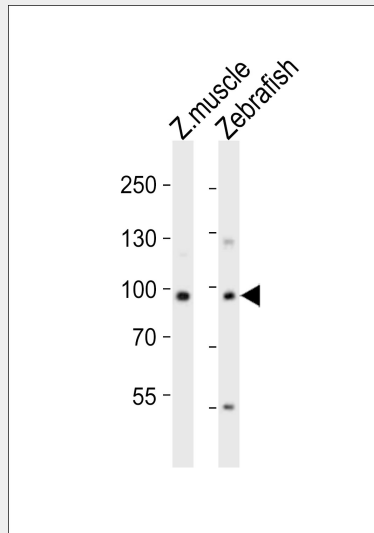
**Function** Deubiquitinase that mediates deubiquitination of target proteins and is involved in various processes such as autophagy and endoplasmic reticulum-associated degradation (ERAD).

### (DANRE) usp13 Antibody (Center) - Protocols

Provided below are standard protocols that you may find useful for product applications.

- [Western Blot](#)
- [Blocking Peptides](#)
- [Dot Blot](#)
- [Immunohistochemistry](#)
- [Immunofluorescence](#)
- [Immunoprecipitation](#)
- [Flow Cytometry](#)
- [Cell Culture](#)

### (DANRE) usp13 Antibody (Center) - Images



Western blot analysis of lysates from zebra fish muscle, Zebrafish cell line (from left to right), using (DANRE) usp13 Antibody (Center)(Cat. #AP21083a). AP21083a was diluted at 1:1000 at each lane. A goat anti-rabbit IgG H&L(HRP) at 1:10000 dilution was used as the secondary antibody. Lysates at 20ug per lane.

### (DANRE) usp13 Antibody (Center) - Background

Deubiquitinase that mediates deubiquitination of target proteins and is involved in various processes such as autophagy and endoplasmic reticulum-associated degradation (ERAD) (By similarity).

### (DANRE) usp13 Antibody (Center) - References

Howe K.,et al.Nature 496:498-503(2013).