

**MTTP Antibody (C-term)**  
**Purified Rabbit Polyclonal Antibody (Pab)**  
**Catalog # AP21081a**

**Specification**

---

**MTTP Antibody (C-term) - Product Information**

Application	<b>WB, FC,E</b>
Primary Accession	<a href="#">P55157</a>
Reactivity	<b>Human</b>
Host	<b>Rabbit</b>
Clonality	<b>Polyclonal</b>
Isotype	<b>Rabbit IgG</b>
Calculated MW	<b>99351</b>

**MTTP Antibody (C-term) - Additional Information**

**Gene ID** 4547

**Other Names**

Microsomal triglyceride transfer protein large subunit, MTTP, MTP

**Target/Specificity**

This MTTP antibody is generated from a rabbit immunized with a KLH conjugated synthetic peptide between 878-911 amino acids from the C-terminal region of human MTTP.

**Dilution**

WB~~1:1000

FC~~1:25

**Format**

Purified polyclonal antibody supplied in PBS with 0.09% (W/V) sodium azide. This antibody is purified through a protein A column, followed by peptide affinity purification.

**Storage**

Maintain refrigerated at 2-8°C for up to 2 weeks. For long term storage store at -20°C in small aliquots to prevent freeze-thaw cycles.

**Precautions**

MTTP Antibody (C-term) is for research use only and not for use in diagnostic or therapeutic procedures.

**MTTP Antibody (C-term) - Protein Information**

**Name** MTTP

**Synonyms** MTP

**Function** Catalyzes the transport of triglyceride, cholesteryl ester, and phospholipid between

phospholipid surfaces (PubMed:[15897609](#), PubMed:[16478722](#), PubMed:[22236406](#), PubMed:[23475612](#), PubMed:[25108285](#), PubMed:[26224785](#), PubMed:[8876250](#), PubMed:[8939939](#)). Required for the assembly and secretion of plasma lipoproteins that contain apolipoprotein B (PubMed:[16478722](#), PubMed:[23475612](#), PubMed:[26224785](#), PubMed:[8876250](#), PubMed:[8939939](#)). May be involved in regulating cholesteryl ester biosynthesis in cells that produce lipoproteins (By similarity).

#### Cellular Location

Endoplasmic reticulum. Golgi apparatus. Note=Colocalizes with P4HB/PDI in the endoplasmic reticulum (PubMed:[23475612](#), PubMed:[26224785](#))

#### Tissue Location

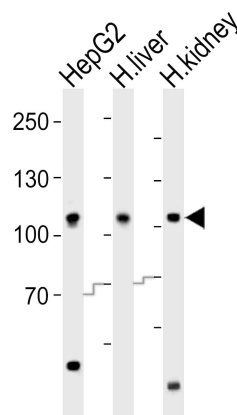
Liver and small intestine. Also found in ovary, testis and kidney.

### MTTP Antibody (C-term) - Protocols

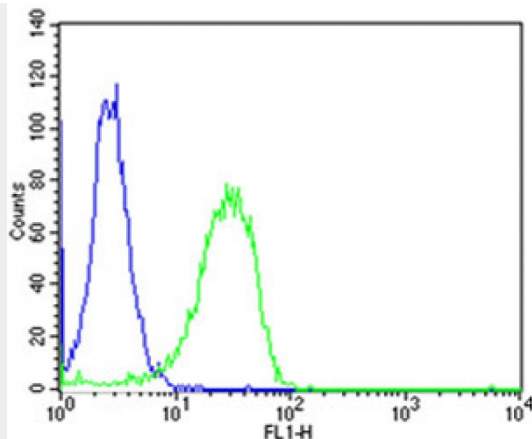
Provided below are standard protocols that you may find useful for product applications.

- [Western Blot](#)
- [Blocking Peptides](#)
- [Dot Blot](#)
- [Immunohistochemistry](#)
- [Immunofluorescence](#)
- [Immunoprecipitation](#)
- [Flow Cytometry](#)
- [Cell Culture](#)

### MTTP Antibody (C-term) - Images



Western blot analysis of lysates from HepG2 cell line, human liver, human kidney tissue (from left to right), using MTTP Antibody (C-term)(Cat. #AP21081a). AP21081a was diluted at 1:1000 at each lane. A goat anti-rabbit IgG H&L(HRP) at 1:10000 dilution was used as the secondary antibody. Lysates at 20ug per lane.



Flow cytometric analysis of HeLa cells using MTTP Antibody (C-term)(green, Cat#AP21081a) compared to an isotype control of rabbit IgG(blue). AP21081a was diluted at 1:25 dilution. An Alexa Fluor® 488 goat anti-rabbit IgG at 1:400 dilution was used as the secondary antibody.

#### **MTTP Antibody (C-term) - Background**

Catalyzes the transport of triglyceride, cholesteryl ester, and phospholipid between phospholipid surfaces. Required for the secretion of plasma lipoproteins that contain apolipoprotein B.

#### **MTTP Antibody (C-term) - References**

- Shoulders C.C.,et al.Hum. Mol. Genet. 2:2109-2116(1993).
- Sharp D.,et al.Nature 365:65-69(1993).
- Sharp D.,et al.Biochemistry 33:9057-9061(1994).
- Ota T.,et al.Nat. Genet. 36:40-45(2004).
- Hagan D.L.,et al.J. Biol. Chem. 269:28737-28744(1994).