

CHSY3 Antibody (Center)
Purified Rabbit Polyclonal Antibody (Pab)
Catalog # AP21080a**Specification**

CHSY3 Antibody (Center) - Product Information

Application	WB,E
Primary Accession	O70JA7
Other Accession	O5DTK1
Reactivity	Human, Mouse
Predicted	Mouse
Host	Rabbit
Clonality	Polyclonal
Isotype	Rabbit IgG
Calculated MW	100284

CHSY3 Antibody (Center) - Additional Information**Gene ID** 337876**Other Names**

Chondroitin sulfate synthase 3, Carbohydrate synthase 2, Chondroitin glucuronyltransferase 3, Chondroitin synthase 2, ChSy-2, Glucuronosyl-N-acetylgalactosaminyl-proteoglycan 4-beta-N-acetylgalactosaminyltransferase II, N-acetylgalactosaminyl-proteoglycan 3-beta-glucuronosyltransferase 3, N-acetylgalactosaminyltransferase 3, CHSY3, CHSY2, CSS3

Target/Specificity

This CHSY3 antibody is generated from a rabbit immunized with a KLH conjugated synthetic peptide between 295-329 amino acids from the Central region of human CHSY3.

Dilution

WB~~1:1000-1:2000

Format

Purified polyclonal antibody supplied in PBS with 0.09% (W/V) sodium azide. This antibody is purified through a protein A column, followed by peptide affinity purification.

Storage

Maintain refrigerated at 2-8°C for up to 2 weeks. For long term storage store at -20°C in small aliquots to prevent freeze-thaw cycles.

Precautions

CHSY3 Antibody (Center) is for research use only and not for use in diagnostic or therapeutic procedures.

CHSY3 Antibody (Center) - Protein Information**Name** CHSY3

Synonyms CHSY2, CSS3

Function Has both beta-1,3-glucuronic acid and beta-1,4-N- acetylgalactosamine transferase activity. Transfers glucuronic acid (GlcUA) from UDP-GlcUA and N-acetylgalactosamine (GalNAc) from UDP- GalNAc to the non-reducing end of the elongating chondroitin polymer. Specific activity is much reduced compared to CHSY1.

Cellular Location

Golgi apparatus, Golgi stack membrane; Single-pass type II membrane protein

Tissue Location

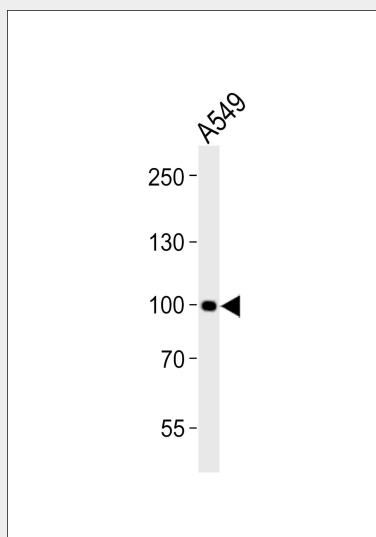
Detected at low levels in brain, cerebral cortex, uterus and small intestine.

CHSY3 Antibody (Center) - Protocols

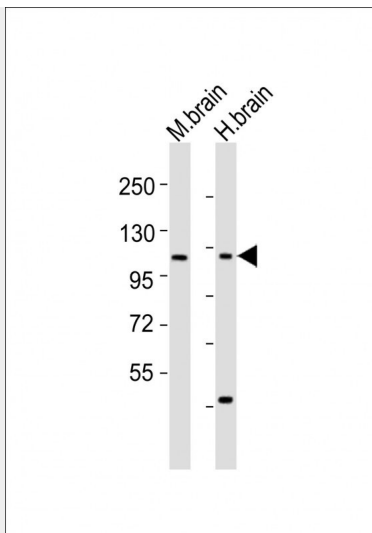
Provided below are standard protocols that you may find useful for product applications.

- [Western Blot](#)
- [Blocking Peptides](#)
- [Dot Blot](#)
- [Immunohistochemistry](#)
- [Immunofluorescence](#)
- [Immunoprecipitation](#)
- [Flow Cytometry](#)
- [Cell Culture](#)

CHSY3 Antibody (Center) - Images



Western blot analysis of lysate from A549 cell line, using CHSY3 Antibody (Center)(Cat. #AP21080a). AP21080a was diluted at 1:1000. A goat anti-rabbit IgG H&L(HRP) at 1:10000 dilution was used as the secondary antibody. Lysate at 20ug.



All lanes : Anti-CHSY3 Antibody (Center) at 1:1000-1:2000 dilution Lane 1: mouse brain lysates
Lane 2: human brain lysates Lysates/proteins at 20 µg per lane. Secondary Goat Anti-Rabbit IgG,
(H+L), Peroxidase conjugated at 1/10000 dilution Predicted band size : 100 kDa Blocking/Dilution
buffer: 5% NFD/MTBST.

CHSY3 Antibody (Center) - Background

Has both beta-1,3-glucuronic acid and beta-1,4-N- acetylgalactosamine transferase activity. Transfers glucuronic acid (GlcUA) from UDP-GlcUA and N-acetylgalactosamine (GalNAc) from UDP-GalNAc to the non-reducing end of the elongating chondroitin polymer. Specific activity is much reduced compared to CHSY1.

CHSY3 Antibody (Center) - References

Yada T.,et al.J. Biol. Chem. 278:39711-39725(2003).
Kamakari S.,et al.Submitted (FEB-2004) to the EMBL/GenBank/DDBJ databases.