

RBCK1 (UBCE7IP3) Antibody (N-term)
Purified Rabbit Polyclonal Antibody (Pab)
Catalog # AP2107a**Specification**

RBCK1 (UBCE7IP3) Antibody (N-term) - Product Information

Application	IHC-P,E
Primary Accession	O9BYM8
Reactivity	Human
Host	Rabbit
Clonality	Polyclonal
Isotype	Rabbit IgG
Antigen Region	16-46

RBCK1 (UBCE7IP3) Antibody (N-term) - Additional Information**Gene ID** 10616**Other Names**

RanBP-type and C3HC4-type zinc finger-containing protein 1, 632-, HBV-associated factor 4, Heme-oxidized IRP2 ubiquitin ligase 1, HOIL-1, Hepatitis B virus X-associated protein 4, RING finger protein 54, Ubiquitin-conjugating enzyme 7-interacting protein 3, RBCK1, C20orf18, RNF54, UBCE7IP3, XAP3, XAP4

Target/Specificity

This RBCK1 (UBCE7IP3) antibody is generated from rabbits immunized with a KLH conjugated synthetic peptide between 16-46 amino acids from the N-terminal region of human RBCK1 (UBCE7IP3).

Dilution

IHC-P~~1:50~100

Format

Purified polyclonal antibody supplied in PBS with 0.09% (W/V) sodium azide. This antibody is prepared by Saturated Ammonium Sulfate (SAS) precipitation followed by dialysis against PBS.

Storage

Maintain refrigerated at 2-8°C for up to 2 weeks. For long term storage store at -20°C in small aliquots to prevent freeze-thaw cycles.

Precautions

RBCK1 (UBCE7IP3) Antibody (N-term) is for research use only and not for use in diagnostic or therapeutic procedures.

RBCK1 (UBCE7IP3) Antibody (N-term) - Protein Information**Name** RBCK1

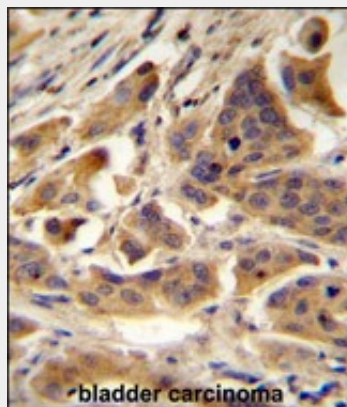
Function E3 ubiquitin-protein ligase, which accepts ubiquitin from specific E2 ubiquitin-conjugating enzymes, such as UBE2L3/UBCM4, and then transfers it to substrates (PubMed:[12629548](#), PubMed:[17449468](#), PubMed:[18711448](#)). Functions as an E3 ligase for oxidized IREB2 and both heme and oxygen are necessary for IREB2 ubiquitination (PubMed:[12629548](#)). Promotes ubiquitination of TAB2 and IRF3 and their degradation by the proteasome (PubMed:[17449468](#), PubMed:[18711448](#)). Component of the LUBAC complex which conjugates linear ('Met-1'-linked) polyubiquitin chains to substrates and plays a key role in NF-kappa-B activation and regulation of inflammation (PubMed:[17006537](#), PubMed:[19136968](#), PubMed:[21455173](#), PubMed:[21455180](#), PubMed:[21455181](#)). LUBAC conjugates linear polyubiquitin to IKBKG and RIPK1 and is involved in activation of the canonical NF-kappa-B and the JNK signaling pathways (PubMed:[17006537](#), PubMed:[19136968](#), PubMed:[21455173](#), PubMed:[21455180](#), PubMed:[21455181](#)). Linear ubiquitination mediated by the LUBAC complex interferes with TNF-induced cell death and thereby prevents inflammation (PubMed:[17006537](#), PubMed:[21455173](#), PubMed:[21455180](#), PubMed:[21455181](#)). LUBAC is recruited to the TNF-R1 signaling complex (TNF-RSC) following polyubiquitination of TNF-RSC components by BIRC2 and/or BIRC3 and to conjugate linear polyubiquitin to IKBKG and possibly other components contributing to the stability of the complex (PubMed:[17006537](#), PubMed:[19136968](#), PubMed:[21455173](#), PubMed:[21455180](#), PubMed:[21455181](#)). The LUBAC complex is also involved in innate immunity by conjugating linear polyubiquitin chains at the surface of bacteria invading the cytosol to form the ubiquitin coat surrounding bacteria (PubMed:[28481331](#)). LUBAC is not able to initiate formation of the bacterial ubiquitin coat, and can only promote formation of linear polyubiquitins on pre-existing ubiquitin (PubMed:[28481331](#)). The bacterial ubiquitin coat acts as an 'eat-me' signal for xenophagy and promotes NF-kappa-B activation (PubMed:[28481331](#)). Together with OTULIN, the LUBAC complex regulates the canonical Wnt signaling during angiogenesis (PubMed:[23708998](#)). Binds polyubiquitin of different linkage types (PubMed:[20005846](#), PubMed:[21455181](#)).

RBCK1 (UBCE7IP3) Antibody (N-term) - Protocols

Provided below are standard protocols that you may find useful for product applications.

- [Western Blot](#)
- [Blocking Peptides](#)
- [Dot Blot](#)
- [Immunohistochemistry](#)
- [Immunofluorescence](#)
- [Immunoprecipitation](#)
- [Flow Cytometry](#)
- [Cell Culture](#)

RBCK1 (UBCE7IP3) Antibody (N-term) - Images



RBCK1 (UBCE7IP3) Antibody (N-term) (Cat. #AP2107A) immunohistochemistry analysis in formalin fixed and paraffin embedded human bladder carcinoma followed by peroxidase conjugation of the secondary antibody and DAB staining. This data demonstrates the use of RBCK1 (UBCE7IP3) Antibody (N-term) for immunohistochemistry. Clinical relevance has not been evaluated.

RBCK1 (UBCE7IP3) Antibody (N-term) - Background

The protein encoded by this gene is similar to mouse UIP28/UbcM4 interacting protein. Alternative splicing has been observed at this locus, resulting in distinct isoforms.

RBCK1 (UBCE7IP3) Antibody (N-term) - References

Yamanaka, K., et al., Nat. Cell Biol. 5(4):336-340 (2003).
Martinez-Noel, G., et al., FEBS Lett. 454(3):257-261 (1999).