

**TOMM34 Antibody (Center)**  
**Purified Rabbit Polyclonal Antibody (Pab)**  
**Catalog # AP21061a**

**Specification**

---

**TOMM34 Antibody (Center) - Product Information**

Application	WB,E
Primary Accession	<a href="#">Q15785</a>
Reactivity	Mouse
Host	Rabbit
Clonality	Polyclonal
Isotype	Rabbit IgG
Calculated MW	34559

**TOMM34 Antibody (Center) - Additional Information**

**Gene ID** 10953

**Other Names**

Mitochondrial import receptor subunit TOM34, hTom34, Translocase of outer membrane 34 kDa subunit, TOMM34, URCC3

**Target/Specificity**

This TOMM34 antibody is generated from a rabbit immunized with a KLH conjugated synthetic peptide between 156-188 amino acids from the Central region of human TOMM34.

**Dilution**

WB~~1:1000

**Format**

Purified polyclonal antibody supplied in PBS with 0.09% (W/V) sodium azide. This antibody is purified through a protein A column, followed by peptide affinity purification.

**Storage**

Maintain refrigerated at 2-8°C for up to 2 weeks. For long term storage store at -20°C in small aliquots to prevent freeze-thaw cycles.

**Precautions**

TOMM34 Antibody (Center) is for research use only and not for use in diagnostic or therapeutic procedures.

**TOMM34 Antibody (Center) - Protein Information**

**Name** TOMM34

**Synonyms** URCC3

**Function** Plays a role in the import of cytosolically synthesized preproteins into mitochondria.

Binds the mature portion of precursor proteins. Interacts with cellular components, and possesses weak ATPase activity. May be a chaperone-like protein that helps to keep newly synthesized precursors in an unfolded import compatible state.

#### Cellular Location

Cytoplasm. Mitochondrion outer membrane; Peripheral membrane protein; Cytoplasmic side

#### Tissue Location

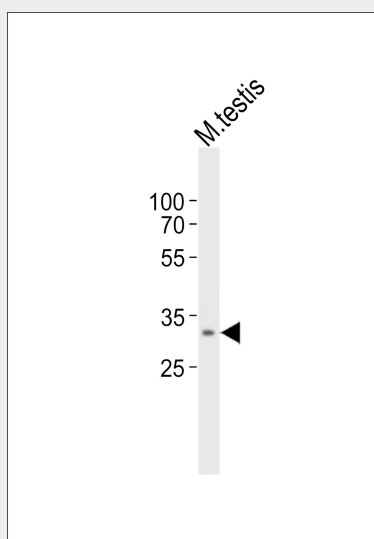
Ubiquitous.

### TOMM34 Antibody (Center) - Protocols

Provided below are standard protocols that you may find useful for product applications.

- [Western Blot](#)
- [Blocking Peptides](#)
- [Dot Blot](#)
- [Immunohistochemistry](#)
- [Immunofluorescence](#)
- [Immunoprecipitation](#)
- [Flow Cytometry](#)
- [Cell Culture](#)

### TOMM34 Antibody (Center) - Images



Western blot analysis of lysate from mouse testis tissue, using TOMM34 Antibody (Center)(Cat. #AP21061a). AP21061a was diluted at 1:1000. A goat anti-rabbit IgG H&L(HRP) at 1:10000 dilution was used as the secondary antibody. Lysate at 20ug.

### TOMM34 Antibody (Center) - Background

Plays a role in the import of cytosolically synthesized preproteins into mitochondria. Binds the mature portion of precursor proteins. Interacts with cellular components, and possesses weak ATPase activity. May be a chaperone-like protein that helps to keep newly synthesized precursors in an unfolded import compatible state.

### TOMM34 Antibody (Center) - References

Nuttall S.D.,et al.DNA Cell Biol. 16:1067-1074(1997).  
Shimokawa T.,et al.Int. J. Oncol. 29:381-386(2006).  
Kalnine N.,et al.Submitted (OCT-2004) to the EMBL/GenBank/DDBJ databases.  
Ebert L.,et al.Submitted (JUN-2004) to the EMBL/GenBank/DDBJ databases.  
Suzuki Y.,et al.Submitted (APR-2005) to the EMBL/GenBank/DDBJ databases.