

**(Mouse) Epcam Antibody (C-term)
Purified Rabbit Polyclonal Antibody (Pab)
Catalog # AP21054a**

Specification

(Mouse) Epcam Antibody (C-term) - Product Information

Application	WB, FC,E
Primary Accession	O99JW5
Other Accession	O55159
Reactivity	Mouse
Predicted	Rat
Host	Rabbit
Clonality	Polyclonal
Isotype	Rabbit IgG

(Mouse) Epcam Antibody (C-term) - Additional Information

Gene ID 17075

Other Names

Epithelial cell adhesion molecule, Ep-CAM, Epithelial glycoprotein 314, EGP314, mEGP314, Protein 289A, Tumor-associated calcium signal transducer 1, CD326, Epcam, Tacstd1

Target/Specificity

This Mouse Epcam antibody is generated from a rabbit immunized with a KLH conjugated synthetic peptide between 302-335 amino acids from the C-terminal region of mouse Epcam.

Dilution

WB~~1:1000

FC~~1:25

Format

Purified polyclonal antibody supplied in PBS with 0.09% (W/V) sodium azide. This antibody is purified through a protein A column, followed by peptide affinity purification.

Storage

Maintain refrigerated at 2-8°C for up to 2 weeks. For long term storage store at -20°C in small aliquots to prevent freeze-thaw cycles.

Precautions

(Mouse) Epcam Antibody (C-term) is for research use only and not for use in diagnostic or therapeutic procedures.

(Mouse) Epcam Antibody (C-term) - Protein Information

Name Epcam

Synonyms Tacstd1

Function May act as a physical homophilic interaction molecule between intestinal epithelial cells (IECs) and intraepithelial lymphocytes (IELs) at the mucosal epithelium for providing immunological barrier as a first line of defense against mucosal infection. Plays a role in embryonic stem cells proliferation and differentiation. Up-regulates the expression of FABP5, MYC and cyclins A and E (By similarity).

Cellular Location

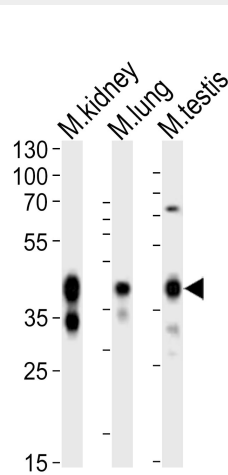
Lateral cell membrane {ECO:0000250|UniProtKB:P16422}; Single-pass type I membrane protein {ECO:0000250|UniProtKB:P16422}. Cell junction, tight junction {ECO:0000250|UniProtKB:P16422}. Note=Colocalizes with CLDN7 at the lateral cell membrane and tight junction {ECO:0000250|UniProtKB:P16422}

(Mouse) Epcam Antibody (C-term) - Protocols

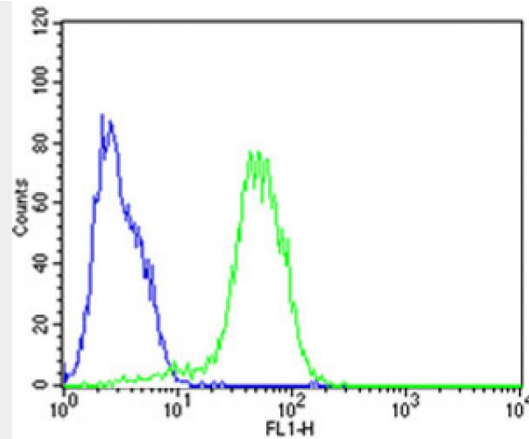
Provided below are standard protocols that you may find useful for product applications.

- [Western Blot](#)
- [Blocking Peptides](#)
- [Dot Blot](#)
- [Immunohistochemistry](#)
- [Immunofluorescence](#)
- [Immunoprecipitation](#)
- [Flow Cytometry](#)
- [Cell Culture](#)

(Mouse) Epcam Antibody (C-term) - Images



Western blot analysis of lysates from mouse kidney, mouse lung, mouse testis tissue lysate (from left to right), using Epcam Antibody (C-term)(Cat. #AP21054a). AP21054a was diluted at 1:1000 at each lane. A goat anti-rabbit IgG H&L(HRP) at 1:10000 dilution was used as the secondary antibody. Lysates at 20ug per lane.



Flow cytometric analysis of HepG2 cells using (Mouse) Epcam Antibody (C-term)(green, Cat#AP21054a) compared to an isotype control of rabbit IgG(blue). AP21054a was diluted at 1:25 dilution. An Alexa Fluor® 488 goat anti-rabbit IgG at 1:400 dilution was used as the secondary antibody.

(Mouse) Epcam Antibody (C-term) - Background

May act as a physical homophilic interaction molecule between intestinal epithelial cells (IECs) and intraepithelial lymphocytes (IELs) at the mucosal epithelium for providing immunological barrier as a first line of defense against mucosal infection. Plays a role in embryonic stem cells proliferation and differentiation. Up-regulates the expression of FABP5, MYC and cyclins A and E (By similarity).

(Mouse) Epcam Antibody (C-term) - References

Bergsagel P.L.,et al.J. Immunol. 148:590-596(1992).
Carninci P.,et al.Science 309:1559-1563(2005).

(Mouse) Epcam Antibody (C-term) - Citations

- [Extracellular Vesicles Enriched with Moonlighting Metalloproteinase Are Highly Transmissive, Pro-Tumorigenic, and Trans-Activates Cellular Communication Network Factor \(\): CRISPR against Cancer](#)