

**SALL4 Antibody (C-term)**  
**Purified Rabbit Polyclonal Antibody (Pab)**  
**Catalog # AP21044c**

**Specification**

---

**SALL4 Antibody (C-term) - Product Information**

Application	WB,E
Primary Accession	<a href="#">O9UJO4</a>
Reactivity	Human
Host	Rabbit
Clonality	Polyclonal
Isotype	Rabbit IgG
Calculated MW	112231

**SALL4 Antibody (C-term) - Additional Information**

**Gene ID** 57167

**Other Names**

Sal-like protein 4, Zinc finger protein 797, Zinc finger protein SALL4, SALL4, ZNF797

**Target/Specificity**

This SALL4 antibody is generated from a rabbit immunized with a KLH conjugated synthetic peptide between 1035-1069 amino acids from the C-terminal region of human SALL4.

**Dilution**

WB~~1:1000

**Format**

Purified polyclonal antibody supplied in PBS with 0.09% (W/V) sodium azide. This antibody is purified through a protein A column, followed by peptide affinity purification.

**Storage**

Maintain refrigerated at 2-8°C for up to 2 weeks. For long term storage store at -20°C in small aliquots to prevent freeze-thaw cycles.

**Precautions**

SALL4 Antibody (C-term) is for research use only and not for use in diagnostic or therapeutic procedures.

**SALL4 Antibody (C-term) - Protein Information**

**Name** SALL4

**Synonyms** ZNF797

**Function** Transcription factor with a key role in the maintenance and self-renewal of embryonic and hematopoietic stem cells.

### Cellular Location

Cytoplasm. Nucleus.

### Tissue Location

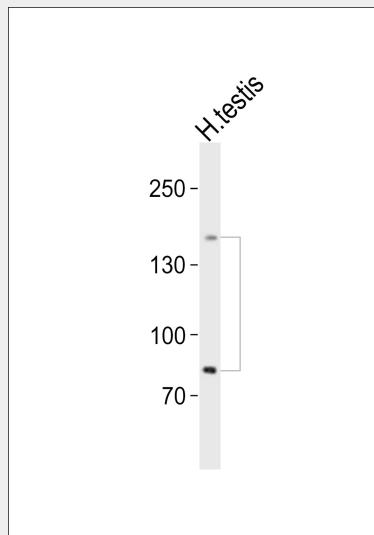
Expressed in testis. Constitutively expressed in acute myeloid leukemia (AML).

### SALL4 Antibody (C-term) - Protocols

Provided below are standard protocols that you may find useful for product applications.

- [Western Blot](#)
- [Blocking Peptides](#)
- [Dot Blot](#)
- [Immunohistochemistry](#)
- [Immunofluorescence](#)
- [Immunoprecipitation](#)
- [Flow Cytometry](#)
- [Cell Culture](#)

### SALL4 Antibody (C-term) - Images



Western blot analysis of lysate from human testis tissue lysate, using SALL4 Antibody (C-term)(Cat. #AP21044c). AP21044c was diluted at 1:1000. A goat anti-rabbit IgG H&L(HRP) at 1:10000 dilution was used as the secondary antibody. Lysate at 20ug.

### SALL4 Antibody (C-term) - Background

Transcription factor with a key role in the maintenance and self-renewal of embryonic and hematopoietic stem cells.

### SALL4 Antibody (C-term) - References

- Ma Y., et al. Blood 108:2726-2735(2006).  
Deloukas P., et al. Nature 414:865-871(2001).  
Mural R.J., et al. Submitted (SEP-2005) to the EMBL/GenBank/DDBJ databases.  
Kohlhase J., et al. Hum. Mol. Genet. 11:2979-2987(2002).  
Dephoure N., et al. Proc. Natl. Acad. Sci. U.S.A. 105:10762-10767(2008).

