

**KLF4 Antibody (C-term)**  
**Purified Rabbit Polyclonal Antibody (Pab)**  
**Catalog # AP21041a****Specification**

---

**KLF4 Antibody (C-term) - Product Information**

Application	<b>WB,E</b>
Primary Accession	<a href="#">O43474</a>
Reactivity	<b>Human</b>
Host	<b>Rabbit</b>
Clonality	<b>Polyclonal</b>
Isotype	<b>Rabbit IgG</b>
Calculated MW	<b>54671</b>

**KLF4 Antibody (C-term) - Additional Information****Gene ID** 9314**Other Names**

Krueppel-like factor 4, Epithelial zinc finger protein EZF, Gut-enriched krueppel-like factor, KLF4, EZF, GKLF

**Target/Specificity**

This KLF4 antibody is generated from a rabbit immunized with a KLH conjugated synthetic peptide between 408-450 amino acids from the C-terminal region of human KLF4.

**Dilution**

WB~~1:1000

**Format**

Purified polyclonal antibody supplied in PBS with 0.09% (W/V) sodium azide. This antibody is purified through a protein A column, followed by peptide affinity purification.

**Storage**

Maintain refrigerated at 2-8°C for up to 2 weeks. For long term storage store at -20°C in small aliquots to prevent freeze-thaw cycles.

**Precautions**

KLF4 Antibody (C-term) is for research use only and not for use in diagnostic or therapeutic procedures.

**KLF4 Antibody (C-term) - Protein Information****Name** KLF4 ([HGNC:6348](#))**Synonyms** EZF, GKLF**Function** Transcription factor; can act both as activator and as repressor. Binds the 5'-CACCC-3'

core sequence. Binds to the promoter region of its own gene and can activate its own transcription. Regulates the expression of key transcription factors during embryonic development. Plays an important role in maintaining embryonic stem cells, and in preventing their differentiation. Required for establishing the barrier function of the skin and for postnatal maturation and maintenance of the ocular surface. Involved in the differentiation of epithelial cells and may also function in skeletal and kidney development. Contributes to the down-regulation of p53/TP53 transcription.

#### Cellular Location

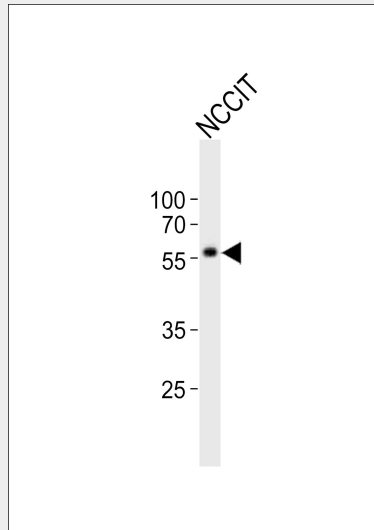
Nucleus {ECO:0000250|UniProtKB:Q60793}. Cytoplasm {ECO:0000250|UniProtKB:Q60793}

#### KLF4 Antibody (C-term) - Protocols

Provided below are standard protocols that you may find useful for product applications.

- [Western Blot](#)
- [Blocking Peptides](#)
- [Dot Blot](#)
- [Immunohistochemistry](#)
- [Immunofluorescence](#)
- [Immunoprecipitation](#)
- [Flow Cytometry](#)
- [Cell Culture](#)

#### KLF4 Antibody (C-term) - Images



Western blot analysis of lysate from NCCIT cell line, using KLF4 Antibody (C-term)(Cat. #AP21041a). AP21041a was diluted at 1:1000. A goat anti-rabbit IgG H&L(HRP) at 1:10000 dilution was used as the secondary antibody. Lysate at 20ug.

#### KLF4 Antibody (C-term) - Background

Transcription factor; can act both as activator and as repressor. Binds the 5'-CACCC-3' core sequence. Binds to the promoter region of its own gene and can activate its own transcription. Regulates the expression of key transcription factors during embryonic development. Plays an important role in maintaining embryonic stem cells, and in preventing their differentiation. Required for establishing the barrier function of the skin and for postnatal maturation and maintenance of the

ocular surface. Involved in the differentiation of epithelial cells and may also function in skeletal and kidney development. Contributes to the down-regulation of p53/TP53 transcription.

#### **KLF4 Antibody (C-term) - References**

- Yet S.-F., et al. J. Biol. Chem. 273:1026-1031(1998).  
Foster K.W., et al. Cell Growth Differ. 10:423-434(1999).  
Camacho-Vanegas O., et al. FASEB J. 27:432-436(2013).  
Garrett-Sinha L.A., et al. Submitted (SEP-1996) to the EMBL/GenBank/DDBJ databases.  
Ota T., et al. Nat. Genet. 36:40-45(2004).