

**CHST12 Antibody (N-term)**  
**Purified Rabbit Polyclonal Antibody (Pab)**  
**Catalog # AP21028b**

**Specification**

---

**CHST12 Antibody (N-term) - Product Information**

Application	<b>WB, IHC-P,E</b>
Primary Accession	<a href="#">O9NRB3</a>
Reactivity	<b>Human</b>
Host	<b>Rabbit</b>
Clonality	<b>Polyclonal</b>
Isotype	<b>Rabbit IgG</b>
Calculated MW	<b>48414</b>

**CHST12 Antibody (N-term) - Additional Information**

**Gene ID** 55501

**Other Names**

Carbohydrate sulfotransferase 12, Chondroitin 4-O-sulfotransferase 2, Chondroitin 4-sulfotransferase 2, C4ST-2, C4ST2, Sulfotransferase Hlo, CHST12

**Target/Specificity**

This CHST12 antibody is generated from a rabbit immunized with a KLH conjugated synthetic peptide between 72-106 amino acids from the N-terminal region of human CHST12.

**Dilution**

WB~~1:2000

IHC-P~~1:25

**Format**

Purified polyclonal antibody supplied in PBS with 0.09% (W/V) sodium azide. This antibody is purified through a protein A column, followed by peptide affinity purification.

**Storage**

Maintain refrigerated at 2-8°C for up to 2 weeks. For long term storage store at -20°C in small aliquots to prevent freeze-thaw cycles.

**Precautions**

CHST12 Antibody (N-term) is for research use only and not for use in diagnostic or therapeutic procedures.

**CHST12 Antibody (N-term) - Protein Information**

**Name** CHST12

**Function** Catalyzes the transfer of sulfate to position 4 of the N- acetylgalactosamine (GalNAc) residue of chondroitin and desulfated dermatan sulfate. Chondroitin sulfate constitutes the

predominant proteoglycan present in cartilage and is distributed on the surfaces of many cells and extracellular matrices. Activity toward partially desulfated dermatan sulfate is however lower. Does not form 4, 6-di-O- sulfated GalNAc when chondroitin sulfate C is used as an acceptor.

#### Cellular Location

Golgi apparatus membrane; Single-pass type II membrane protein

#### Tissue Location

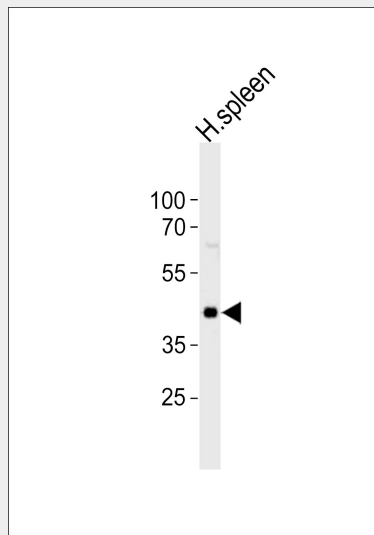
Widely expressed. Expressed a high level in spinal chord, heart, spleen, thyroid, pituitary gland, adrenal gland, peripheral blood leukocytes, thymus, lung, small intestine, fetal kidney, fetal spleen and fetal lung.

### CHST12 Antibody (N-term) - Protocols

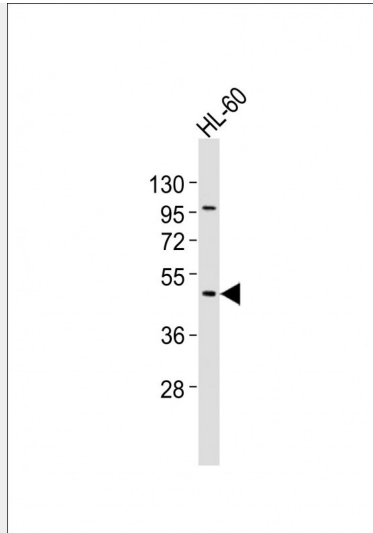
Provided below are standard protocols that you may find useful for product applications.

- [Western Blot](#)
- [Blocking Peptides](#)
- [Dot Blot](#)
- [Immunohistochemistry](#)
- [Immunofluorescence](#)
- [Immunoprecipitation](#)
- [Flow Cytometry](#)
- [Cell Culture](#)

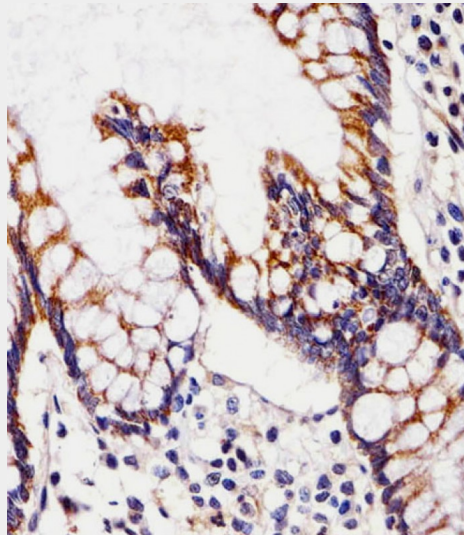
### CHST12 Antibody (N-term) - Images



Western blot analysis of lysate from human spleen tissue lysate, using CHST12 Antibody (N-term)(Cat. #AP21028b). AP21028b was diluted at 1:1000. A goat anti-rabbit IgG H&L(HRP) at 1:10000 dilution was used as the secondary antibody. Lysate at 20ug.



Anti-CHST12 Antibody (N-term) at 1:2000 dilution + HL-60 whole cell lysates Lysates/proteins at 20 µg per lane. Secondary Goat Anti-Rabbit IgG, (H+L), Peroxidase conjugated at 1/10000 dilution Predicted band size : 48 kDa Blocking/Dilution buffer: 5% NFDm/TBST.



AP21028b staining CHST12 in Human small intestine tissue sections by Immunohistochemistry (IHC-P - paraformaldehyde-fixed, paraffin-embedded sections). Tissue was fixed with formaldehyde and blocked with 3% BSA for 0.5 hour at room temperature; antigen retrieval was by heat mediation with a citrate buffer (pH6). Samples were incubated with primary antibody (1/25) for 1 hour at 37°C. A undiluted biotinylated goat polyvalent antibody was used as the secondary antibody.

### **CHST12 Antibody (N-term) - Background**

Catalyzes the transfer of sulfate to position 4 of the N-acetylgalactosamine (GalNAc) residue of chondroitin and desulfated dermatan sulfate. Chondroitin sulfate constitutes the predominant proteoglycan present in cartilage and is distributed on the surfaces of many cells and extracellular matrices. Activity toward partially desulfated dermatan sulfate is however lower. Does not form 4, 6-di-O-sulfated GalNAc when chondroitin sulfate C is used as an acceptor.

### **CHST12 Antibody (N-term) - References**

Hiraoka N., et al. J. Biol. Chem. 275:20188-20196(2000).

Xia G.,et al.Submitted (MAY-2000) to the EMBL/GenBank/DDBJ databases.  
Clark H.F.,et al.Genome Res. 13:2265-2270(2003).  
Ota T.,et al.Nat. Genet. 36:40-45(2004).  
Scherer S.W.,et al.Science 300:767-772(2003).