

Mouse Olig1 Antibody (Center)
Purified Rabbit Polyclonal Antibody (Pab)
Catalog # AP21010a

Specification

Mouse Olig1 Antibody (Center) - Product Information

Application	WB,E
Primary Accession	O9JKN5
Other Accession	O9WUQ3
Reactivity	Mouse
Predicted	Rat
Host	Rabbit
Clonality	Polyclonal
Isotype	Rabbit IgG
Calculated MW	27141

Mouse Olig1 Antibody (Center) - Additional Information

Gene ID 50914

Other Names

Oligodendrocyte transcription factor 1, Oligo1, Oligodendrocyte-specific bHLH transcription factor 1, Olig1

Target/Specificity

This Mouse Olig1 antibody is generated from a rabbit immunized with a KLH conjugated synthetic peptide between 161-184 amino acids from the Central region of Mouse Olig1.

Dilution

WB~~1:1000

Format

Purified polyclonal antibody supplied in PBS with 0.09% (W/V) sodium azide. This antibody is purified through a protein A column, followed by peptide affinity purification.

Storage

Maintain refrigerated at 2-8°C for up to 2 weeks. For long term storage store at -20°C in small aliquots to prevent freeze-thaw cycles.

Precautions

Mouse Olig1 Antibody (Center) is for research use only and not for use in diagnostic or therapeutic procedures.

Mouse Olig1 Antibody (Center) - Protein Information

Name Olig1

Function Promotes formation and maturation of oligodendrocytes, especially within the brain.

Cooperates with OLIG2 to establish the pMN domain of the embryonic neural tube.

Cellular Location

Nucleus {ECO:0000255|PROSITE-ProRule:PRU00981}.

Tissue Location

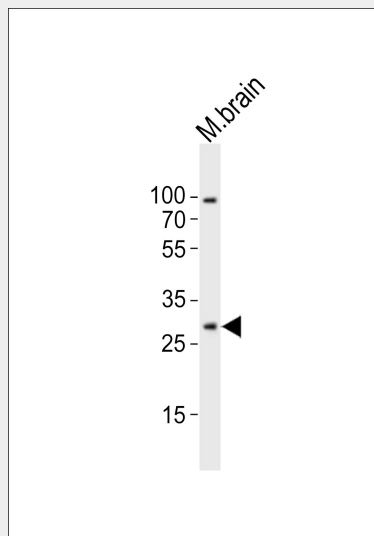
Expressed specifically in brain.

Mouse Olig1 Antibody (Center) - Protocols

Provided below are standard protocols that you may find useful for product applications.

- [Western Blot](#)
- [Blocking Peptides](#)
- [Dot Blot](#)
- [Immunohistochemistry](#)
- [Immunofluorescence](#)
- [Immunoprecipitation](#)
- [Flow Cytometry](#)
- [Cell Culture](#)

Mouse Olig1 Antibody (Center) - Images



Western blot analysis of lysate from mouse brain tissue lysate, using Olig1 Antibody (Center)(Cat. #AP21010a). AP21010a was diluted at 1:1000. A goat anti-rabbit IgG H&L(HRP) at 1:10000 dilution was used as the secondary antibody. Lysate at 20ug.

Mouse Olig1 Antibody (Center) - Background

Promotes formation and maturation of oligodendrocytes, especially within the brain. Cooperates with OLIG2 to establish the pMN domain of the embryonic neural tube.

Mouse Olig1 Antibody (Center) - References

- Takebayashi H.,et al.Mech. Dev. 99:143-148(2000).
Zhou Q.,et al.Neuron 25:331-343(2000).
Lu Q.R.,et al.Neuron 25:317-329(2000).

Lu Q.R., et al. Cell 109:75-86(2002).