

**HES1 Antibody (C-term)**  
**Purified Rabbit Polyclonal Antibody (Pab)**  
**Catalog # AP21002c**

**Specification**

---

**HES1 Antibody (C-term) - Product Information**

Application	WB,E
Primary Accession	<a href="#">O14469</a>
Other Accession	<a href="#">O3ZBG4</a>
Reactivity	Human
Predicted	Bovine
Host	Rabbit
Clonality	Polyclonal
Isotype	Rabbit IgG
Calculated MW	29541

**HES1 Antibody (C-term) - Additional Information**

**Gene ID** 3280

**Other Names**

Transcription factor HES-1, Class B basic helix-loop-helix protein 39, bHLHb39, Hairy and enhancer of split 1, Hairy homolog, Hairy-like protein, hHL, HES1, BHLHB39, HL, HRY

**Target/Specificity**

This HES1 antibody is generated from a rabbit immunized with a KLH conjugated synthetic peptide between 259-293 amino acids from the C-terminal region of human HES1.

**Dilution**

WB~~1:1000

**Format**

Purified polyclonal antibody supplied in PBS with 0.09% (W/V) sodium azide. This antibody is purified through a protein A column, followed by peptide affinity purification.

**Storage**

Maintain refrigerated at 2-8°C for up to 2 weeks. For long term storage store at -20°C in small aliquots to prevent freeze-thaw cycles.

**Precautions**

HES1 Antibody (C-term) is for research use only and not for use in diagnostic or therapeutic procedures.

**HES1 Antibody (C-term) - Protein Information**

**Name** HES1

**Synonyms** BHLHB39, HL, HRY

**Function** Transcriptional repressor of genes that require a bHLH protein for their transcription. May act as a negative regulator of myogenesis by inhibiting the functions of MYOD1 and ASH1. Binds DNA on N-box motifs: 5'-CACNAG-3' with high affinity and on E-box motifs: 5'-CANNTG-3' with low affinity (By similarity). May play a role in a functional FA core complex response to DNA cross-link damage, being required for the stability and nuclear localization of FA core complex proteins, as well as for FANCD2 monoubiquitination in response to DNA damage.

#### Cellular Location

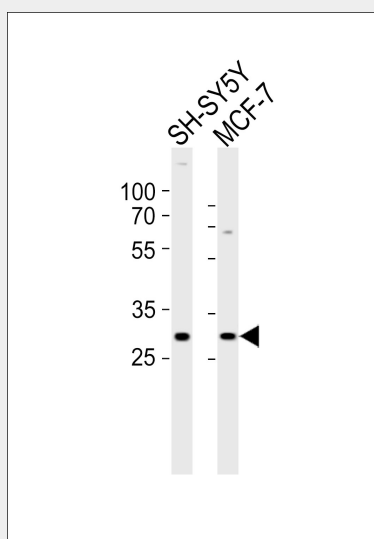
Nucleus.

#### HES1 Antibody (C-term) - Protocols

Provided below are standard protocols that you may find useful for product applications.

- [Western Blot](#)
- [Blocking Peptides](#)
- [Dot Blot](#)
- [Immunohistochemistry](#)
- [Immunofluorescence](#)
- [Immunoprecipitation](#)
- [Flow Cytometry](#)
- [Cell Culture](#)

#### HES1 Antibody (C-term) - Images



Western blot analysis of lysates from SH-SY5Y, MCF-7 cell line (from left to right), using HES1 Antibody (C-term)(Cat. #AP21002c). AP21002c was diluted at 1:1000 at each lane. A goat anti-rabbit IgG H&L(HRP) at 1:10000 dilution was used as the secondary antibody. Lysates at 20ug per lane.

#### HES1 Antibody (C-term) - Background

Transcriptional repressor of genes that require a bHLH protein for their transcription. May act as a negative regulator of myogenesis by inhibiting the functions of MYOD1 and ASH1. Binds DNA on N-box motifs: 5'-CACNAG-3' with high affinity and on E-box motifs: 5'-CANNTG-3' with low affinity (By similarity). May play a role in a functional FA core complex response to DNA cross-link damage, being required for the stability and nuclear localization of FA core complex proteins, as well as for

FANCD2 monoubiquitination in response to DNA damage.

### **HES1 Antibody (C-term) - References**

Feder J.N., et al. Genomics 20:56-61(1994).

Yao J., et al. Submitted (MAY-2000) to the EMBL/GenBank/DDBJ databases.

Ota T., et al. Nat. Genet. 36:40-45(2004).

Ebert L., et al. Submitted (JUN-2004) to the EMBL/GenBank/DDBJ databases.

Takata T., et al. Biochem. Biophys. Res. Commun. 301:250-257(2003).