

SOD3 Antibody (C-term)
Purified Rabbit Polyclonal Antibody (Pab)
Catalog # AP20996c

Specification

SOD3 Antibody (C-term) - Product Information

Application	WB,E
Primary Accession	P08294
Reactivity	Human
Host	Rabbit
Clonality	Polyclonal
Isotype	Rabbit IgG
Calculated MW	25851

SOD3 Antibody (C-term) - Additional Information

Gene ID 6649

Other Names

Extracellular superoxide dismutase [Cu-Zn], EC-SOD, SOD3

Target/Specificity

This SOD3 antibody is generated from a rabbit immunized with a KLH conjugated synthetic peptide between 186-219 amino acids from the C-terminal region of human SOD3.

Dilution

WB~~1:500-1:1000

Format

Purified polyclonal antibody supplied in PBS with 0.09% (W/V) sodium azide. This antibody is purified through a protein A column, followed by peptide affinity purification.

Storage

Maintain refrigerated at 2-8°C for up to 2 weeks. For long term storage store at -20°C in small aliquots to prevent freeze-thaw cycles.

Precautions

SOD3 Antibody (C-term) is for research use only and not for use in diagnostic or therapeutic procedures.

SOD3 Antibody (C-term) - Protein Information

Name SOD3

Function Protect the extracellular space from toxic effect of reactive oxygen intermediates by converting superoxide radicals into hydrogen peroxide and oxygen.

Cellular Location

Secreted, extracellular space. Golgi apparatus, trans-Golgi network {ECO:0000250|UniProtKB:O09164}. Note=99% of EC-SOD is anchored to heparan sulfate proteoglycans in the tissue interstitium, and 1% is located in the vasculature in equilibrium between the plasma and the endothelium

Tissue Location

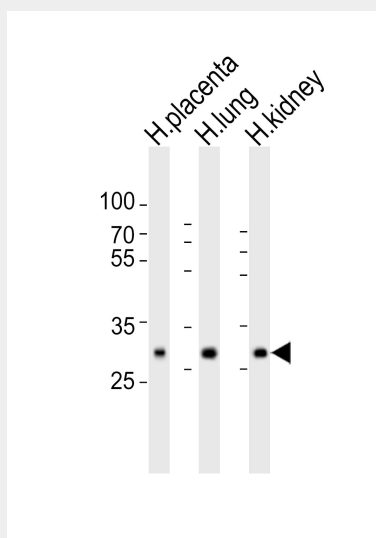
Expressed in blood vessels, heart, lung, kidney and placenta. Major SOD isoenzyme in extracellular fluids such as plasma, lymph and synovial fluid

SOD3 Antibody (C-term) - Protocols

Provided below are standard protocols that you may find useful for product applications.

- [Western Blot](#)
- [Blocking Peptides](#)
- [Dot Blot](#)
- [Immunohistochemistry](#)
- [Immunofluorescence](#)
- [Immunoprecipitation](#)
- [Flow Cytometry](#)
- [Cell Culture](#)

SOD3 Antibody (C-term) - Images



Western blot analysis of lysates from human placenta, human lung, human kidney tissue lysate (from left to right), using SOD3 Antibody (C-term)(Cat. #AP20996c). AP20996c was diluted at 1:1000 at each lane. A goat anti-rabbit IgG H&L(HRP) at 1:10000 dilution was used as the secondary antibody. Lysates at 20ug per lane.

SOD3 Antibody (C-term) - Background

Protect the extracellular space from toxic effect of reactive oxygen intermediates by converting superoxide radicals into hydrogen peroxide and oxygen.

SOD3 Antibody (C-term) - References

Hjalmarsson K., et al. Proc. Natl. Acad. Sci. U.S.A. 84:6340-6344(1987).

Folz R.J.,et al.Genomics 22:162-171(1994).

Halleck A.,et al.Submitted (JUN-2004) to the EMBL/GenBank/DDBJ databases.

Adachi T.,et al.Free Radic. Biol. Med. 13:205-210(1992).

Nozik-Grayck E.,et al.Int. J. Biochem. Cell Biol. 37:2466-2471(2005).