

**CXCL16 Antibody (Center)**  
**Purified Rabbit Polyclonal Antibody (Pab)**  
**Catalog # AP20991a**

**Specification**

---

**CXCL16 Antibody (Center) - Product Information**

|                   |                        |
|-------------------|------------------------|
| Application       | WB,E                   |
| Primary Accession | <a href="#">O9H2A7</a> |
| Reactivity        | Human                  |
| Host              | Rabbit                 |
| Clonality         | Polyclonal             |
| Isotype           | Rabbit IgG             |
| Calculated MW     | 27579                  |

**CXCL16 Antibody (Center) - Additional Information**

**Gene ID** 58191

**Other Names**

C-X-C motif chemokine 16, Scavenger receptor for phosphatidylserine and oxidized low density lipoprotein, SR-PSOX, Small-inducible cytokine B16, Transmembrane chemokine CXCL16, CXCL16, SCYB16, SRPSOX

**Target/Specificity**

This CXCL16 antibody is generated from a rabbit immunized with a KLH conjugated synthetic peptide between 150-183 amino acids from the Central region of human CXCL16.

**Dilution**

WB~~1:500

**Format**

Purified polyclonal antibody supplied in PBS with 0.09% (W/V) sodium azide. This antibody is purified through a protein A column, followed by peptide affinity purification.

**Storage**

Maintain refrigerated at 2-8°C for up to 2 weeks. For long term storage store at -20°C in small aliquots to prevent freeze-thaw cycles.

**Precautions**

CXCL16 Antibody (Center) is for research use only and not for use in diagnostic or therapeutic procedures.

**CXCL16 Antibody (Center) - Protein Information**

**Name** CXCL16

**Synonyms** SCYB16, SRPSOX

**Function** Acts as a scavenger receptor on macrophages, which specifically binds to OxLDL (oxidized low density lipoprotein), suggesting that it may be involved in pathophysiology such as atherogenesis (By similarity). Induces a strong chemotactic response. Induces calcium mobilization. Binds to CXCR6/Bonzo.

#### Cellular Location

Cell membrane; Single-pass type I membrane protein. Secreted. Note=Also exists as a soluble form

#### Tissue Location

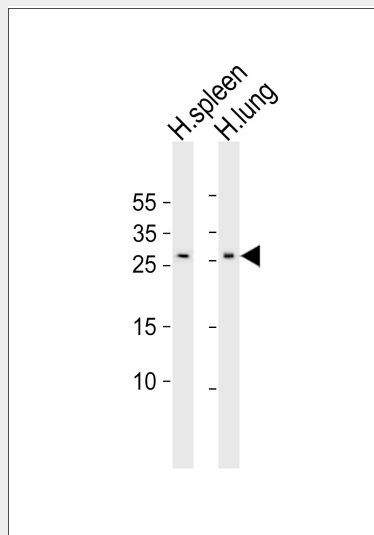
Expressed in T-cell areas. Expressed in spleen, lymph nodes, lung, kidney, small intestine and thymus. Weak expression in heart and liver and no expression in brain and bone marrow

### CXCL16 Antibody (Center) - Protocols

Provided below are standard protocols that you may find useful for product applications.

- [Western Blot](#)
- [Blocking Peptides](#)
- [Dot Blot](#)
- [Immunohistochemistry](#)
- [Immunofluorescence](#)
- [Immunoprecipitation](#)
- [Flow Cytometry](#)
- [Cell Culture](#)

### CXCL16 Antibody (Center) - Images



Western blot analysis of lysates from human spleen, human lung tissue lysate (from left to right), using CXCL16 Antibody (Center)(Cat. #AP20991a). AP20991a was diluted at 1:500 at each lane. A goat anti-rabbit IgG H&L(HRP) at 1:10000 dilution was used as the secondary antibody. Lysates at 20ug per lane.

### CXCL16 Antibody (Center) - Background

Acts as a scavenger receptor on macrophages, which specifically binds to OxLDL (oxidized low density lipoprotein), suggesting that it may be involved in pathophysiology such as atherogenesis

(By similarity). Induces a strong chemotactic response. Induces calcium mobilization. Binds to CXCR6/Bonzo.

#### **CXCL16 Antibody (Center) - References**

- Matloubian M., et al. Nat. Immunol. 1:298-304(2000).  
Wilbanks A., et al. J. Immunol. 166:5145-5154(2001).  
Shimaoka T., et al. J. Biol. Chem. 275:40663-40666(2000).  
Livingston R.J., et al. Submitted (OCT-2006) to the EMBL/GenBank/DDBJ databases.  
Clark H.F., et al. Genome Res. 13:2265-2270(2003).