

EWSR1 Antibody (C-term)
Purified Rabbit Polyclonal Antibody (Pab)
Catalog # AP20984c

Specification

EWSR1 Antibody (C-term) - Product Information

Application	IF, WB,E
Primary Accession	O01844
Other Accession	O61545
Reactivity	Human, Mouse
Host	Rabbit
Clonality	Polyclonal
Isotype	Rabbit IgG
Calculated MW	68478

EWSR1 Antibody (C-term) - Additional Information

Gene ID 2130

Other Names

RNA-binding protein EWS, EWS oncogene, Ewing sarcoma breakpoint region 1 protein, EWSR1, EWS

Target/Specificity

This EWSR1 antibody is generated from a rabbit immunized with a KLH conjugated synthetic peptide between 639-674 amino acids from the C-terminal region of human EWSR1.

Dilution

IF~~1:25

WB~~1:1000

Format

Purified polyclonal antibody supplied in PBS with 0.09% (W/V) sodium azide. This antibody is purified through a protein A column, followed by peptide affinity purification.

Storage

Maintain refrigerated at 2-8°C for up to 2 weeks. For long term storage store at -20°C in small aliquots to prevent freeze-thaw cycles.

Precautions

EWSR1 Antibody (C-term) is for research use only and not for use in diagnostic or therapeutic procedures.

EWSR1 Antibody (C-term) - Protein Information

Name EWSR1

Synonyms EWS

Function Might normally function as a transcriptional repressor. EWS- fusion-proteins (EFPS) may play a role in the tumorigenic process. They may disturb gene expression by mimicking, or interfering with the normal function of CTD-POLII within the transcription initiation complex. They may also contribute to an aberrant activation of the fusion protein target genes.

Cellular Location

Nucleus. Cytoplasm. Cell membrane. Note=Relocates from cytoplasm to ribosomes upon PTK2B/FAK2 activation

Tissue Location

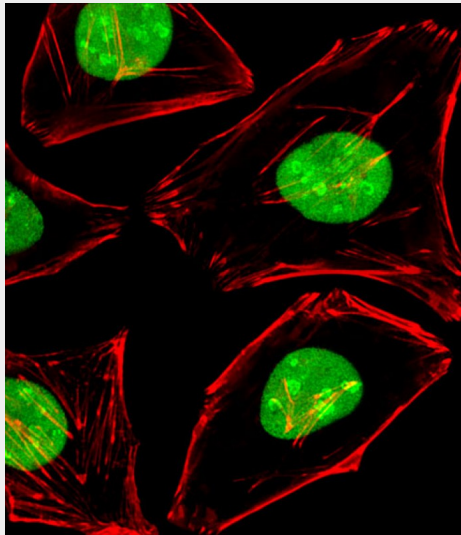
Ubiquitous.

EWSR1 Antibody (C-term) - Protocols

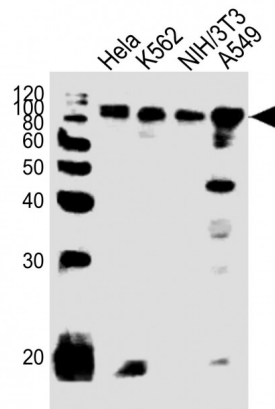
Provided below are standard protocols that you may find useful for product applications.

- [Western Blot](#)
- [Blocking Peptides](#)
- [Dot Blot](#)
- [Immunohistochemistry](#)
- [Immunofluorescence](#)
- [Immunoprecipitation](#)
- [Flow Cytometry](#)
- [Cell Culture](#)

EWSR1 Antibody (C-term) - Images



Immunofluorescent analysis of 4% paraformaldehyde-fixed, 0.1% Triton X-100 permeabilized HeLa (Human Cervical epithelial adenocarcinoma cell line) cells labeling EWSR1 with AP20984c at 1/25 dilution, followed by Alexa Fluor 488-conjugated goat anti-rabbit IgG (1583138) secondary antibody at 1/400 dilution (green). Confocal image showing nuclear staining on HeLa cell line. Cytoplasmic actin is detected with Alexa Fluor® 555 conjugated with Phalloidin (OB16636430) at 1/100 dilution (red).



All lanes : Anti-EWSR1 Antibody (C-term) at 1:1000 dilution Lane 1: HeLa whole cell lysates Lane 2: K562 whole cell lysates Lane 3: NIH/3T3 whole cell lysates Lane 4: A549 whole cell lysates Lysates/proteins at 20 µg per lane. Secondary Goat Anti-Rabbit IgG, (H+L), Peroxidase conjugated at 1/10000 dilution Predicted band size : 68 kDa Blocking/Dilution buffer: 5% NFDM/TBST.

EWSR1 Antibody (C-term) - Background

Might normally function as a transcriptional repressor. EWS-fusion-proteins (EFPS) may play a role in the tumorigenic process. They may disturb gene expression by mimicking, or interfering with the normal function of CTD-POLII within the transcription initiation complex. They may also contribute to an aberrant activation of the fusion protein target genes.

EWSR1 Antibody (C-term) - References

- Delattre O., et al. Nature 359:162-165(1992).
- Plougastel B., et al. Genomics 18:609-615(1993).
- Zucman-Rossi J., et al. Submitted (MAY-1998) to the EMBL/GenBank/DDBJ databases.
- Collins J.E., et al. Genome Biol. 5:R84.1-R84.11(2004).
- Ota T., et al. Nat. Genet. 36:40-45(2004).