

PAX6 Antibody (Center)
Purified Rabbit Polyclonal Antibody (Pab)
Catalog # AP20979a

Specification

PAX6 Antibody (Center) - Product Information

Application	WB,E
Primary Accession	P26367
Other Accession	P63015 , P26630 , Q1LZF1
Reactivity	Human
Predicted	Bovine, Zebrafish, Mouse
Host	Rabbit
Clonality	Polyclonal
Isotype	Rabbit IgG
Calculated MW	46683

PAX6 Antibody (Center) - Additional Information

Gene ID 5080

Other Names

Paired box protein Pax-6, Aniridia type II protein, Oculorhombin, PAX6, AN2

Target/Specificity

This PAX6 antibody is generated from a rabbit immunized with a KLH conjugated synthetic peptide between 183-214 amino acids from the Central region of human PAX6.

Dilution

WB~~1:1000

Format

Purified polyclonal antibody supplied in PBS with 0.09% (W/V) sodium azide. This antibody is purified through a protein A column, followed by peptide affinity purification.

Storage

Maintain refrigerated at 2-8°C for up to 2 weeks. For long term storage store at -20°C in small aliquots to prevent freeze-thaw cycles.

Precautions

PAX6 Antibody (Center) is for research use only and not for use in diagnostic or therapeutic procedures.

PAX6 Antibody (Center) - Protein Information

Name PAX6

Synonyms AN2

Function Transcription factor with important functions in the development of the eye, nose, central nervous system and pancreas. Required for the differentiation of pancreatic islet alpha cells (By similarity). Competes with PAX4 in binding to a common element in the glucagon, insulin and somatostatin promoters. Regulates specification of the ventral neuron subtypes by establishing the correct progenitor domains (By similarity). Acts as a transcriptional repressor of NFATC1- mediated gene expression (By similarity).

Cellular Location

Nucleus {ECO:0000250|UniProtKB:P63015}. [Isoform 5a]: Nucleus {ECO:0000250|UniProtKB:P63016}

Tissue Location

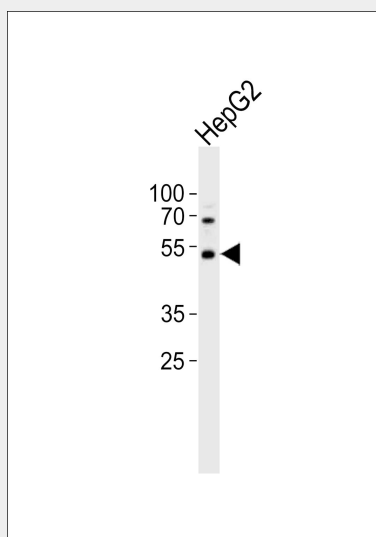
[Isoform 1]: Expressed in lymphoblasts.

PAX6 Antibody (Center) - Protocols

Provided below are standard protocols that you may find useful for product applications.

- [Western Blot](#)
- [Blocking Peptides](#)
- [Dot Blot](#)
- [Immunohistochemistry](#)
- [Immunofluorescence](#)
- [Immunoprecipitation](#)
- [Flow Cytometry](#)
- [Cell Culture](#)

PAX6 Antibody (Center) - Images



Western blot analysis of lysate from HepG2 cell line, using PAX6 Antibody (Center)(Cat. #AP20979a). AP20979a was diluted at 1:1000. A goat anti-rabbit IgG H&L(HRP) at 1:10000 dilution was used as the secondary antibody. Lysate at 20ug.

PAX6 Antibody (Center) - Background

Transcription factor with important functions in the development of the eye, nose, central nervous system and pancreas. Required for the differentiation of pancreatic islet alpha cells (By similarity).

Competes with PAX4 in binding to a common element in the glucagon, insulin and somatostatin promoters. Regulates specification of the ventral neuron subtypes by establishing the correct progenitor domains (By similarity). Isoform 5a appears to function as a molecular switch that specifies target genes.

PAX6 Antibody (Center) - References

Ton C.C.T.,et al.Cell 67:1059-1074(1991).
Glaser T.,et al.Nat. Genet. 2:232-239(1992).
Liu J.,et al.Submitted (JUL-2001) to the EMBL/GenBank/DDBJ databases.
Bechtel S.,et al.BMC Genomics 8:399-399(2007).
Taylor T.D.,et al.Nature 440:497-500(2006).