

**WDR82 Antibody (N-term)**  
**Purified Rabbit Polyclonal Antibody (Pab)**  
**Catalog # AP20978b**

**Specification**

---

**WDR82 Antibody (N-term) - Product Information**

Application	WB, IHC-P-Leica,E
Primary Accession	<a href="#">Q6UXN9</a>
Other Accession	<a href="#">Q8BFQ4</a>
Reactivity	Human, Mouse
Predicted	Mouse
Host	Rabbit
Clonality	Polyclonal
Isotype	Rabbit IgG
Calculated MW	35079
Antigen Region	12-46

**WDR82 Antibody (N-term) - Additional Information**

**Gene ID** 80335

**Other Names**

WD repeat-containing protein 82, Protein TMEM113, Swd2, WDR82, TMEM113, WDR82A

**Target/Specificity**

This WDR82 antibody is generated from a rabbit immunized with a KLH conjugated synthetic peptide between 12~46 amino acids from the N-terminal region of human WDR82.

**Dilution**

WB~~1:2000  
IHC-P-Leica~~1:500

**Format**

Purified polyclonal antibody supplied in PBS with 0.09% (W/V) sodium azide. This antibody is purified through a protein A column, followed by peptide affinity purification.

**Storage**

Maintain refrigerated at 2-8°C for up to 2 weeks. For long term storage store at -20°C in small aliquots to prevent freeze-thaw cycles.

**Precautions**

WDR82 Antibody (N-term) is for research use only and not for use in diagnostic or therapeutic procedures.

**WDR82 Antibody (N-term) - Protein Information**

**Name** WDR82 {ECO:0000303|PubMed:17998332, ECO:0000312|HGNC:HGNC:28826}

**Function** Regulatory component of the SET1/COMPASS complex implicated in the tethering of this complex to transcriptional start sites of active genes (PubMed:[17998332](#), PubMed:[18838538](#), PubMed:[20516061](#)). Facilitates histone H3 'Lys-4' methylation (H3K4me) via recruitment of the SETD1A or SETD1B to the 'Ser-5' phosphorylated C-terminal domain (CTD) of RNA polymerase II large subunit (POLR2A) (PubMed:[17998332](#), PubMed:[18838538](#)). Component of PTW/PP1 phosphatase complex, which plays a role in the control of chromatin structure and cell cycle progression during the transition from mitosis into interphase (PubMed:[20516061](#)). Together with ZC3H4, but independently of the SET1 complex, part of a transcription termination checkpoint that promotes transcription termination of long non-coding RNAs (lncRNAs) (PubMed:[33767452](#), PubMed:[33913806](#)). The transcription termination checkpoint is activated by the inefficiently spliced first exon of lncRNAs and promotes transcription termination of lncRNAs and their subsequent degradation by the exosome (PubMed:[33767452](#)).

#### Cellular Location

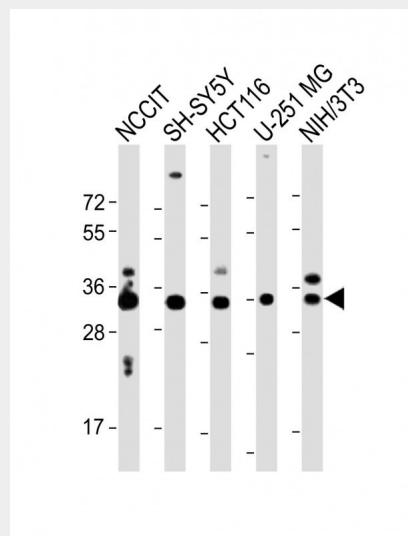
Nucleus. Chromosome {ECO:0000250|UniProtKB:Q8BFQ4}. Note=Associates with chromatin (PubMed:20516061). Recruited at sites of high RNA polymerase II occupancy (By similarity). {ECO:0000250|UniProtKB:Q8BFQ4, ECO:0000269|PubMed:20516061}

#### WDR82 Antibody (N-term) - Protocols

Provided below are standard protocols that you may find useful for product applications.

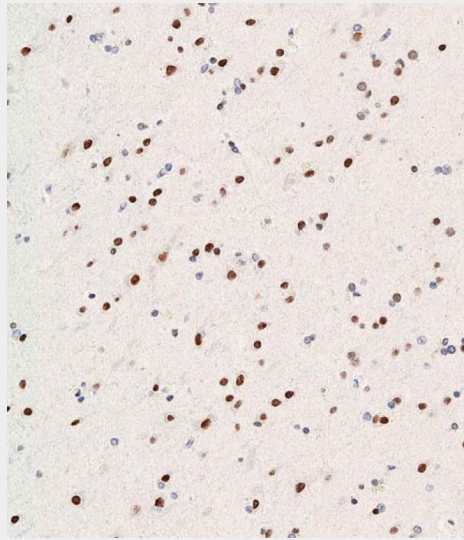
- [Western Blot](#)
- [Blocking Peptides](#)
- [Dot Blot](#)
- [Immunohistochemistry](#)
- [Immunofluorescence](#)
- [Immunoprecipitation](#)
- [Flow Cytometry](#)
- [Cell Culture](#)

#### WDR82 Antibody (N-term) - Images

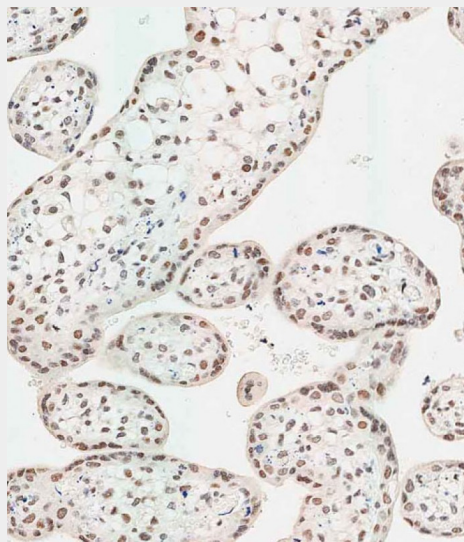


All lanes : Anti-WDR82 Antibody (N-term) at 1:2000 dilution Lane 1: NCCIT whole cell lysate Lane 2: SH-SY5Y whole cell lysate Lane 3: HCT116 whole cell lysate Lane 4: U-251 MG whole cell lysate Lane 5: NIH/3T3 whole cell lysate Lysates/proteins at 20 µg per lane. Secondary Goat Anti-Rabbit IgG, (H+L), Peroxidase conjugated at 1/10000 dilution. Predicted band size : 35 kDa

Blocking/Dilution buffer: 5% NFDm/TBST.



Immunohistochemical analysis of paraffin-embedded human brain tissue using AP20978b performed on the Leica® BOND RXm. Tissue was fixed with formaldehyde at room temperature, antigen retrieval was by heat mediation with a EDTA buffer (pH9. 0). Samples were incubated with primary antibody(1:500) for 1 hours at room temperature. A undiluted biotinylated CRF Anti-Polyvalent HRP Polymer antibody was used as the secondary antibody.



Immunohistochemical analysis of paraffin-embedded human placenta tissue using AP20978b performed on the Leica® BOND RXm. Tissue was fixed with formaldehyde at room temperature, antigen retrieval was by heat mediation with a EDTA buffer (pH9. 0). Samples were incubated with primary antibody(1:500) for 1 hours at room temperature. A undiluted biotinylated CRF Anti-Polyvalent HRP Polymer antibody was used as the secondary antibody.

### **WDR82 Antibody (N-term) - Background**

Regulatory component of the SET1 complex implicated in the tethering of this complex to transcriptional start sites of active genes. Facilitates histone H3 'Lys-4' methylation via recruitment of the SETD1A or SETD1B to the 'Ser-5' phosphorylated C-terminal domain (CTD) of RNA polymerase II large subunit (POLR2A). Component of PTW/PP1 phosphatase complex, which plays a role in the control of chromatin structure and cell cycle progression during the transition from mitosis into interphase.

**WDR82 Antibody (N-term) - References**

Clark H.F., et al. Genome Res. 13:2265-2270(2003).  
Ota T., et al. Nat. Genet. 36:40-45(2004).  
Mural R.J., et al. Submitted (JUL-2005) to the EMBL/GenBank/DDBJ databases.  
Lee J.-H., et al. J. Biol. Chem. 280:41725-41731(2005).  
Higa L.A., et al. Nat. Cell Biol. 8:1277-1283(2006).

**WDR82 Antibody (N-term) - Citations**

- [H3K4me3 and Wdr82 are associated with tumor progression and a favorable prognosis in human colorectal cancer.](#)