

**WWTR1 Antibody (C-term)**  
**Purified Rabbit Polyclonal Antibody (Pab)**  
**Catalog # AP20948c**

**Specification**

---

**WWTR1 Antibody (C-term) - Product Information**

Application	WB,E
Primary Accession	<a href="#">O9GZV5</a>
Other Accession	<a href="#">O9EPK5</a>
Reactivity	Human, Mouse
Host	Rabbit
Clonality	Polyclonal
Isotype	Rabbit IgG
Calculated MW	44101

**WWTR1 Antibody (C-term) - Additional Information**

**Gene ID** 25937

**Other Names**

WW domain-containing transcription regulator protein 1, Transcriptional coactivator with PDZ-binding motif, WWTR1, TAZ

**Target/Specificity**

This WWTR1 antibody is generated from a rabbit immunized with a KLH conjugated synthetic peptide between 296-330 amino acids from the C-terminal region of human WWTR1.

**Dilution**

WB~~1:1000

**Format**

Purified polyclonal antibody supplied in PBS with 0.09% (W/V) sodium azide. This antibody is purified through a protein A column, followed by peptide affinity purification.

**Storage**

Maintain refrigerated at 2-8°C for up to 2 weeks. For long term storage store at -20°C in small aliquots to prevent freeze-thaw cycles.

**Precautions**

WWTR1 Antibody (C-term) is for research use only and not for use in diagnostic or therapeutic procedures.

**WWTR1 Antibody (C-term) - Protein Information**

**Name** WWTR1

**Synonyms** TAZ

**Function** Transcriptional coactivator which acts as a downstream regulatory target in the Hippo signaling pathway that plays a pivotal role in organ size control and tumor suppression by restricting proliferation and promoting apoptosis (PubMed:[11118213](#), PubMed:[18227151](#)). The core of this pathway is composed of a kinase cascade wherein STK3/MST2 and STK4/MST1, in complex with its regulatory protein SAV1, phosphorylates and activates LATS1/2 in complex with its regulatory protein MOB1, which in turn phosphorylates and inactivates YAP1 oncoprotein and WWTR1/TAZ (PubMed:[18227151](#)). WWTR1 enhances PAX8 and NKX2-1/TTF1-dependent gene activation (PubMed:[19010321](#)). In conjunction with YAP1, involved in the regulation of TGFβ1-dependent SMAD2 and SMAD3 nuclear accumulation (PubMed:[18568018](#)). Plays a key role in coupling SMADs to the transcriptional machinery such as the mediator complex (PubMed:[18568018](#)). Regulates embryonic stem-cell self-renewal, promotes cell proliferation and epithelial-mesenchymal transition (PubMed:[18227151](#), PubMed:[18568018](#)).

#### Cellular Location

Nucleus. Cytoplasm. Cell membrane. Note=Concentrates along specific portions of the plasma membrane, and accumulates in punctate nuclear bodies (By similarity). When phosphorylated, is retained in the cytoplasm by YWHAZ (By similarity). Can be retained in the nucleus by MED15 (PubMed:[18568018](#)). Localized in the cytoplasm in areas of epithelial cell high density (PubMed:[21145499](#)). At blastocyst stage expressed in the nucleus in trophectodermal cells, however expressed in the cytoplasm in the inner cell mass (By similarity). In the nucleus, phosphorylation by PRP4K induces nuclear exclusion (PubMed:[29695716](#))  
{ECO:0000250|UniProtKB:Q9EPK5, ECO:0000269|PubMed:[18568018](#), ECO:0000269|PubMed:[21145499](#), ECO:0000269|PubMed:[29695716](#)}

#### Tissue Location

Highly expressed in kidney, heart, placenta and lung. Expressed in the thyroid tissue.

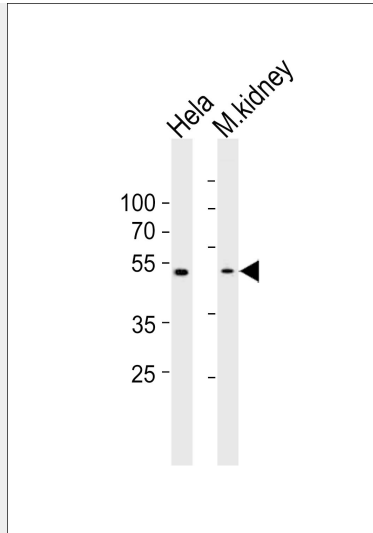
#### WWTR1 Antibody (C-term) - Protocols

Provided below are standard protocols that you may find useful for product applications.

- [Western Blot](#)
- [Blocking Peptides](#)
- [Dot Blot](#)
- [Immunohistochemistry](#)
- [Immunofluorescence](#)
- [Immunoprecipitation](#)
- [Flow Cytometry](#)
- [Cell Culture](#)

#### WWTR1 Antibody (C-term) - Images





Western blot analysis of lysates from HeLa cell line and mouse kidney tissue (from left to right), using WWTR1 Antibody (C-term) (Cat. #AP20948c). AP20948c was diluted at 1:1000 at each lane. A goat anti-rabbit IgG H&L (HRP) at 1:10000 dilution was used as the secondary antibody. Lysates at 20ug per lane.

#### **WWTR1 Antibody (C-term) - Background**

Transcriptional coactivator which acts as a downstream regulatory target in the Hippo signaling pathway that plays a pivotal role in organ size control and tumor suppression by restricting proliferation and promoting apoptosis. The core of this pathway is composed of a kinase cascade wherein STK3/MST2 and STK4/MST1, in complex with its regulatory protein SAV1, phosphorylates and activates LATS1/2 in complex with its regulatory protein MOB1, which in turn phosphorylates and inactivates YAP1 oncoprotein and WWTR1/TAZ. WWTR1 enhances PAX8 and NKX2-1/TTF1-dependent gene activation. Regulates the nuclear accumulation of SMADS and has a key role in coupling them to the transcriptional machinery such as the mediator complex. Regulates embryonic stem-cell self-renewal, promotes cell proliferation and epithelial-mesenchymal transition.

#### **WWTR1 Antibody (C-term) - References**

- Kanai F., et al. EMBO J. 19:6778-6791(2000).
- Ota T., et al. Nat. Genet. 36:40-45(2004).
- Mural R.J., et al. Submitted (SEP-2005) to the EMBL/GenBank/DDBJ databases.
- Bechtel S., et al. BMC Genomics 8:399-399(2007).
- Olsen J.V., et al. Cell 127:635-648(2006).