

MOUSE Bcar3 Antibody (C-term)
Purified Rabbit Polyclonal Antibody (Pab)
Catalog # AP20947c

Specification

MOUSE Bcar3 Antibody (C-term) - Product Information

Application	WB,E
Primary Accession	O9QZK2
Reactivity	Mouse
Host	Rabbit
Clonality	Polyclonal
Isotype	Rabbit IgG
Calculated MW	92263

MOUSE Bcar3 Antibody (C-term) - Additional Information

Gene ID 29815

Other Names

Breast cancer anti-estrogen resistance protein 3, p130Cas-binding protein AND-34, Bcar3, And34

Target/Specificity

This MOUSE Bcar3 antibody is generated from a rabbit immunized with a KLH conjugated synthetic peptide between 785-818 amino acids from the C-terminal region of human MOUSE Bcar3.

Dilution

WB~~1:1000

Format

Purified polyclonal antibody supplied in PBS with 0.09% (W/V) sodium azide. This antibody is purified through a protein A column, followed by peptide affinity purification.

Storage

Maintain refrigerated at 2-8°C for up to 2 weeks. For long term storage store at -20°C in small aliquots to prevent freeze-thaw cycles.

Precautions

MOUSE Bcar3 Antibody (C-term) is for research use only and not for use in diagnostic or therapeutic procedures.

MOUSE Bcar3 Antibody (C-term) - Protein Information

Name Bcar3

Synonyms And34

Function Acts as an adapter protein downstream of several growth factor receptors to promote cell proliferation, migration, and redistribution of actin fibers (PubMed:[12517963](#)). Specifically

involved in INS/insulin signaling pathway by mediating MAPK1/ERK2-MAPK3/ERK1 activation and DNA synthesis (By similarity). Promotes insulin-mediated membrane ruffling (By similarity). In response to vasoconstrictor peptide EDN1, involved in the activation of RAP1 downstream of PTK2B via interaction with phosphorylated BCAR1 (PubMed:[10896938](#)). Inhibits cell migration and invasion via regulation of TGFB-mediated matrix digestion, actin filament rearrangement, and inhibition of invadopodia activity (PubMed:[25499443](#)). May inhibit TGFB-SMAD signaling, via facilitating BCAR1 and SMAD2 and/or SMAD3 interaction (PubMed:[25499443](#)). Regulates EGF-induced DNA synthesis (By similarity). Required for the maintenance of ocular lens morphology and structural integrity, potentially via regulation of focal adhesion complex signaling (PubMed:[19365570](#)). Acts upstream of PTPRA to regulate the localization of BCAR1 and PTPRA to focal adhesions, via regulation of SRC-mediated phosphorylation of PTPRA (PubMed:[22801373](#)). Positively regulates integrin-induced tyrosine phosphorylation of BCAR1 (PubMed:[22801373](#)). Acts as a guanine nucleotide exchange factor (GEF) for small GTPases RALA, RAP1A and RRAS (PubMed:[10896938](#)). However, in a contrasting study, lacks GEF activity towards RAP1 (By similarity).

Cellular Location

Cytoplasm. Cell junction, focal adhesion Note=Localization to focal adhesions depends on interaction with PTPRA

Tissue Location

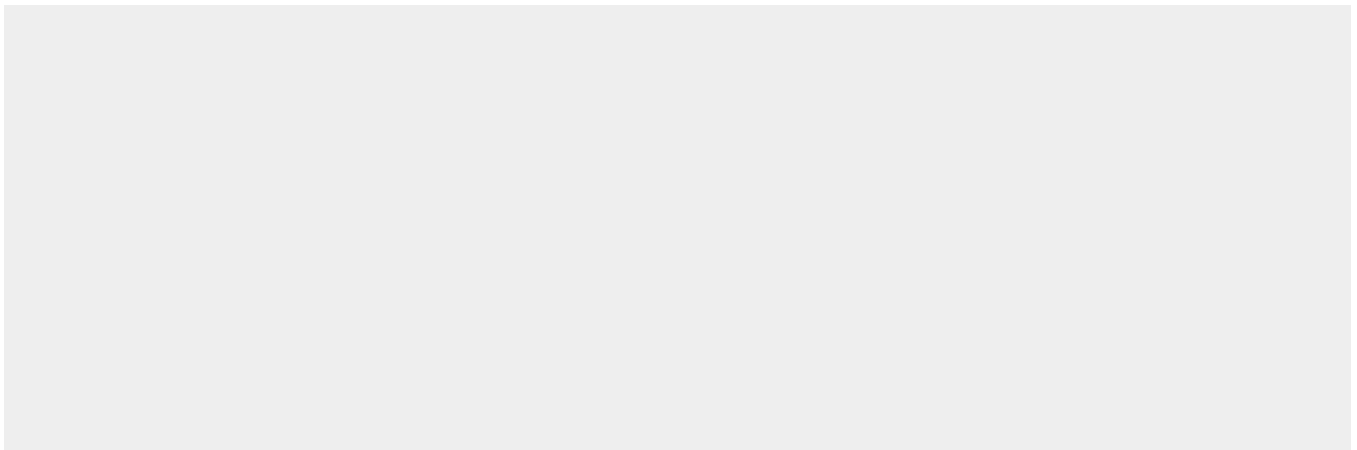
Abundantly expressed in the lung and brain, with lower expression in splenic lymphocytes and liver (at protein level) (PubMed:[19365570](#)). Expressed in splenic lymphocytes (at protein level) (PubMed:[19365570](#)). Expressed in the lymph node cortical region, periphery of the splenic white pulp and in alveolar lung fibroblasts (PubMed:[19365570](#)). Expressed in epithelial cells in the lens equatorial region and early stage nucleated cortical lens fiber cells (PubMed:[19365570](#)). Expressed in the thymus (PubMed:[10438950](#)). Expressed in B-cells (PubMed:[12517963](#)).

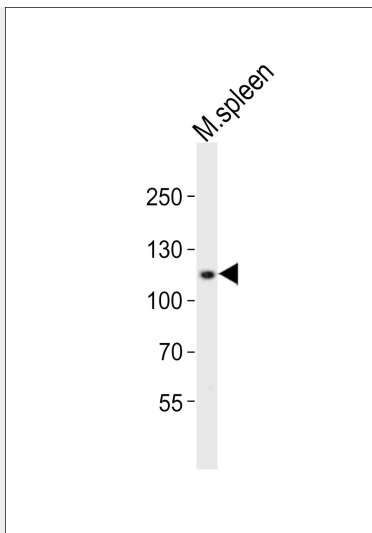
MOUSE Bcar3 Antibody (C-term) - Protocols

Provided below are standard protocols that you may find useful for product applications.

- [Western Blot](#)
- [Blocking Peptides](#)
- [Dot Blot](#)
- [Immunohistochemistry](#)
- [Immunofluorescence](#)
- [Immunoprecipitation](#)
- [Flow Cytometry](#)
- [Cell Culture](#)

MOUSE Bcar3 Antibody (C-term) - Images





Western blot analysis of lysates from mouse spleen tissue lysate, using MOUSE Bcar3 Antibody (C-term)(Cat. #AP20947c). AP20947c was diluted at 1:1000 at each lane. A goat anti-rabbit IgG H&L(HRP) at 1:10000 dilution was used as the secondary antibody.

MOUSE Bcar3 Antibody (C-term) - Background

May act as an adapter protein and couple activated growth factor receptors to signaling molecules that regulate src kinase activity and promote cell migration.

MOUSE Bcar3 Antibody (C-term) - References

Cai D.,et al.J. Immunol. 163:2104-2112(1999).
Carninci P.,et al.Science 309:1559-1563(2005).
Gotoh T.,et al.J. Biol. Chem. 275:30118-30123(2000).
Cai D.,et al.J. Immunol. 170:969-978(2003).