

PPP2R2C Antibody (Center)
Purified Rabbit Polyclonal Antibody (Pab)
Catalog # AP20942a

Specification

PPP2R2C Antibody (Center) - Product Information

Application	WB,E
Primary Accession	Q9Y2T4
Other Accession	P97888 , P50410 , Q8BG02 , Q95LP0 , A1L3L9
Reactivity	Human
Predicted	Xenopus, Monkey, Mouse, Rabbit, Rat
Host	Rabbit
Clonality	Polyclonal
Isotype	Rabbit IgG
Calculated MW	51515
Antigen Region	258-291

PPP2R2C Antibody (Center) - Additional Information

Gene ID 5522

Other Names

Serine/threonine-protein phosphatase 2A 55 kDa regulatory subunit B gamma isoform, IMYPNO1, PP2A subunit B isoform B55-gamma, PP2A subunit B isoform PR55-gamma, PP2A subunit B isoform R2-gamma, PP2A subunit B isoform gamma, PPP2R2C

Target/Specificity

This PPP2R2C antibody is generated from a rabbit immunized with a KLH conjugated synthetic peptide between 258-291 amino acids from the Central region of human PPP2R2C.

Dilution

WB~~1:1000

Format

Purified polyclonal antibody supplied in PBS with 0.09% (W/V) sodium azide. This antibody is purified through a protein A column, followed by peptide affinity purification.

Storage

Maintain refrigerated at 2-8°C for up to 2 weeks. For long term storage store at -20°C in small aliquots to prevent freeze-thaw cycles.

Precautions

PPP2R2C Antibody (Center) is for research use only and not for use in diagnostic or therapeutic procedures.

PPP2R2C Antibody (Center) - Protein Information

Name PPP2R2C

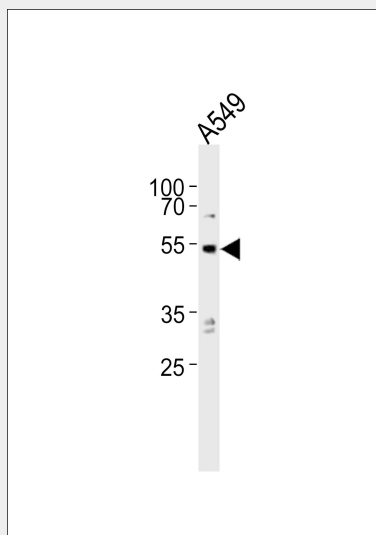
Function The B regulatory subunit might modulate substrate selectivity and catalytic activity, and also might direct the localization of the catalytic enzyme to a particular subcellular compartment.

PPP2R2C Antibody (Center) - Protocols

Provided below are standard protocols that you may find useful for product applications.

- [Western Blot](#)
- [Blocking Peptides](#)
- [Dot Blot](#)
- [Immunohistochemistry](#)
- [Immunofluorescence](#)
- [Immunoprecipitation](#)
- [Flow Cytometry](#)
- [Cell Culture](#)

PPP2R2C Antibody (Center) - Images



Western blot analysis of lysate from A549 cell line, using PPP2R2C Antibody (Center)(Cat. #AP20942a). AP20942a was diluted at 1:1000. A goat anti-rabbit IgG H&L(HRP) at 1:10000 dilution was used as the secondary antibody. Lysate at 20ug.

PPP2R2C Antibody (Center) - Background

The B regulatory subunit might modulate substrate selectivity and catalytic activity, and also might direct the localization of the catalytic enzyme to a particular subcellular compartment.

PPP2R2C Antibody (Center) - References

- Torres R.,et al.DNA Res. 6:323-327(1999).
Hu P.,et al.Genomics 67:83-86(2000).
Yu L.,et al.Submitted (APR-1999) to the EMBL/GenBank/DDBJ databases.
Ota T.,et al.Nat. Genet. 36:40-45(2004).
Hillier L.W.,et al.Nature 434:724-731(2005).