

POU5F1B Antibody (C-term)
Purified Rabbit Polyclonal Antibody (Pab)
Catalog # AP20933c

Specification

POU5F1B Antibody (C-term) - Product Information

Application	WB,E
Primary Accession	Q06416
Other Accession	Q01860
Reactivity	Human
Host	Rabbit
Clonality	Polyclonal
Isotype	Rabbit IgG
Calculated MW	38588

POU5F1B Antibody (C-term) - Additional Information

Gene ID 5462

Other Names

Putative POU domain, class 5, transcription factor 1B, Oct4-pg1, Octamer-binding protein 3-like, Octamer-binding transcription factor 3-like, POU5F1B

Target/Specificity

This POU5F1B antibody is generated from a rabbit immunized with a KLH conjugated synthetic peptide between 292-326 amino acids from the C-terminal region of human POU5F1B.

Dilution

WB~~1:1000

Format

Purified polyclonal antibody supplied in PBS with 0.09% (W/V) sodium azide. This antibody is purified through a protein A column, followed by peptide affinity purification.

Storage

Maintain refrigerated at 2-8°C for up to 2 weeks. For long term storage store at -20°C in small aliquots to prevent freeze-thaw cycles.

Precautions

POU5F1B Antibody (C-term) is for research use only and not for use in diagnostic or therapeutic procedures.

POU5F1B Antibody (C-term) - Protein Information

Name POU5F1B

Function Shows weak transcriptional activator activity.

Cellular Location

Nucleus {ECO:0000255|PROSITE-ProRule:PRU00108, ECO:0000255|PROSITE-ProRule:PRU00530, ECO:0000269|PubMed:18949397}

Tissue Location

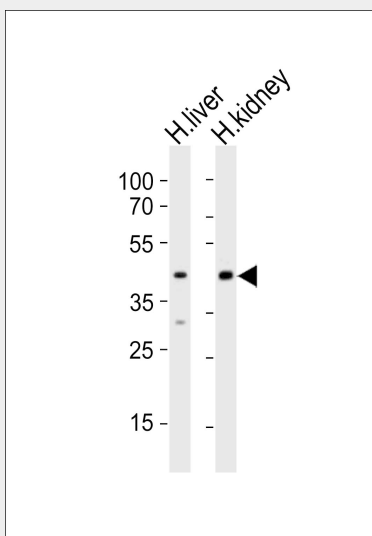
Detected at the mRNA level in several cancer tissues (breast, uterine cervix, lung, thyroid gland, esophagus, colon, urinary bladder, and glioma), but absent in normal tissues

POU5F1B Antibody (C-term) - Protocols

Provided below are standard protocols that you may find useful for product applications.

- [Western Blot](#)
- [Blocking Peptides](#)
- [Dot Blot](#)
- [Immunohistochemistry](#)
- [Immunofluorescence](#)
- [Immunoprecipitation](#)
- [Flow Cytometry](#)
- [Cell Culture](#)

POU5F1B Antibody (C-term) - Images



Western blot analysis of lysates from human liver, human kidney tissue (from left to right), using POU5F1B Antibody (C-term)(Cat. #AP20933c). AP20933c was diluted at 1:1000 at each lane. A goat anti-rabbit IgG H&L(HRP) at 1:10000 dilution was used as the secondary antibody. Lysates at 20ug per lane.

POU5F1B Antibody (C-term) - Background

Shows weak transcriptional activator activity.

POU5F1B Antibody (C-term) - References

Takeda J.,et al.Nucleic Acids Res. 20:4613-4620(1992).
Marques A.C.,et al.PLoS Biol. 3:E357-E357(2005).
van Roozendaal K.E.P.,et al.Submitted (MAY-2000) to the EMBL/GenBank/DDBJ databases.

Zhao F.-Q., et al. Submitted (APR-2006) to the EMBL/GenBank/DDBJ databases.

Zhao S., et al. Submitted (AUG-2010) to the EMBL/GenBank/DDBJ databases.