

**NCAM1 Antibody (C-term)**  
**Purified Rabbit Polyclonal Antibody (Pab)**  
**Catalog # AP20927c**

**Specification**

---

**NCAM1 Antibody (C-term) - Product Information**

Application	WB, IHC-P-Leica,E
Primary Accession	<a href="#">P13591</a>
Other Accession	<a href="#">P13596</a> , <a href="#">P13595</a> , <a href="#">P13590</a> , <a href="#">P31836</a>
Reactivity	Human, Mouse, Rat
Predicted	Bovine, Chicken
Host	Rabbit
Clonality	Polyclonal
Isotype	Rabbit IgG

**NCAM1 Antibody (C-term) - Additional Information**

**Gene ID** 4684

**Other Names**

Neural cell adhesion molecule 1, N-CAM-1, NCAM-1, CD56, NCAM1, NCAM

**Target/Specificity**

This NCAM1 antibody is generated from a rabbit immunized with a KLH conjugated synthetic peptide between 796-830 amino acids from the C-terminal region of human NCAM1.

**Dilution**

WB~~1:500

IHC-P-Leica~~1:500

**Format**

Purified polyclonal antibody supplied in PBS with 0.09% (W/V) sodium azide. This antibody is purified through a protein A column, followed by peptide affinity purification.

**Storage**

Maintain refrigerated at 2-8°C for up to 2 weeks. For long term storage store at -20°C in small aliquots to prevent freeze-thaw cycles.

**Precautions**

NCAM1 Antibody (C-term) is for research use only and not for use in diagnostic or therapeutic procedures.

**NCAM1 Antibody (C-term) - Protein Information**

**Name** NCAM1 ([HGNC:7656](#))

**Synonyms** NCAM

**Function** This protein is a cell adhesion molecule involved in neuron- neuron adhesion, neurite fasciculation, outgrowth of neurites, etc. (Microbial infection) Acts as a receptor for Zika virus.

#### Cellular Location

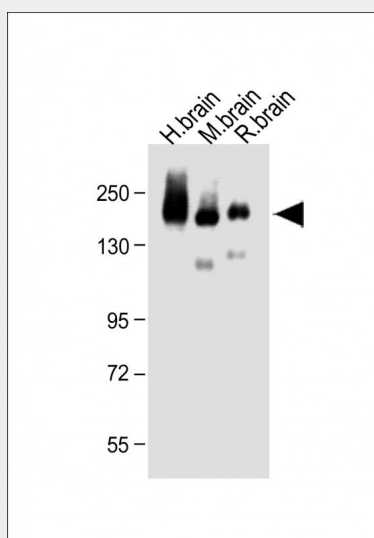
[Isoform 1]: Cell membrane; Single-pass type I membrane protein [Isoform 3]: Cell membrane; Lipid-anchor, GPI- anchor [Isoform 5]: Secreted.

#### NCAM1 Antibody (C-term) - Protocols

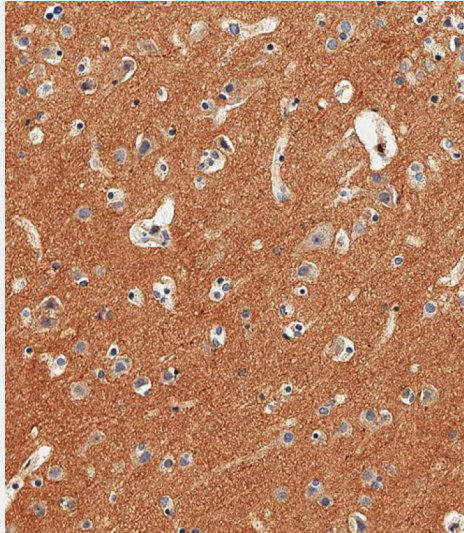
Provided below are standard protocols that you may find useful for product applications.

- [Western Blot](#)
- [Blocking Peptides](#)
- [Dot Blot](#)
- [Immunohistochemistry](#)
- [Immunofluorescence](#)
- [Immunoprecipitation](#)
- [Flow Cytometry](#)
- [Cell Culture](#)

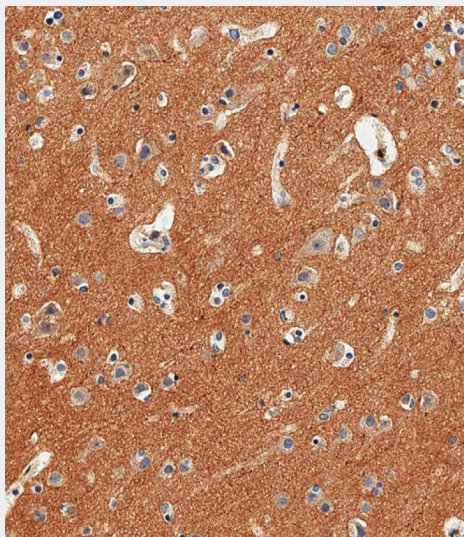
#### NCAM1 Antibody (C-term) - Images



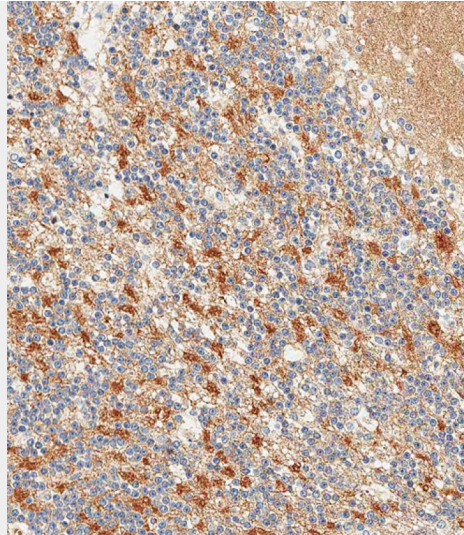
All lanes : Anti-NCAM1 Antibody (C-term) at 1:500 dilution Lane 1: Human brain lysate Lane 2: Mouse brain lysate Lane 3: Rat brain lysate Lysates/proteins at 20 µg per lane. Secondary Goat Anti-Rabbit IgG, (H+L), Peroxidase conjugated at 1/10000 dilution. Predicted band size : 95 kDa Blocking/Dilution buffer: 5% NFDN/TBST.



Immunohistochemical analysis of paraffin-embedded Human brain tissue using AP20927c performed on the Leica® BOND RXm. Tissue was fixed with formaldehyde at room temperature, antigen retrieval was by heat mediation with a EDTA buffer (pH9. 0). Samples were incubated with primary antibody(1:500) for 1 hours at room temperature. A undiluted biotinylated CRF Anti-Polyvalent HRP Polymer antibody was used as the secondary antibody.



Immunohistochemical analysis of paraffin-embedded Human brain tissue using AP20927c performed on the Leica® BOND RXm. Tissue was fixed with formaldehyde at room temperature, antigen retrieval was by heat mediation with a EDTA buffer (pH9. 0). Samples were incubated with primary antibody(1:500) for 1 hours at room temperature. A undiluted biotinylated CRF Anti-Polyvalent HRP Polymer antibody was used as the secondary antibody.



Immunohistochemical analysis of paraffin-embedded Human cerebellum tissue using AP20927c performed on the Leica® BOND RXm. Tissue was fixed with formaldehyde at room temperature, antigen retrieval was by heat mediation with a EDTA buffer (pH9. 0). Samples were incubated with primary antibody(1:500) for 1 hours at room temperature. A undiluted biotinylated CRF Anti-Polyvalent HRP Polymer antibody was used as the secondary antibody.

#### **NCAM1 Antibody (C-term) - Background**

This protein is a cell adhesion molecule involved in neuron-neuron adhesion, neurite fasciculation, outgrowth of neurites, etc.

#### **NCAM1 Antibody (C-term) - References**

- Barton C.H.,et al.Development 104:165-173(1988).
- Lanier L.L.,et al.J. Immunol. 146:4421-4426(1991).
- Saito S.,et al.Lung Cancer 10:307-318(1994).
- Ota T.,et al.Nat. Genet. 36:40-45(2004).
- Totoki Y.,et al.Submitted (MAR-2005) to the EMBL/GenBank/DDBJ databases.