

(RAT) Ccnd3 Antibody (N-term)
Purified Rabbit Polyclonal Antibody (Pab)
Catalog # AP20912b

Specification

(RAT) Ccnd3 Antibody (N-term) - Product Information

Application	WB,E
Primary Accession	P48961
Reactivity	Rat
Host	Rabbit
Clonality	Polyclonal
Isotype	Rabbit IgG
Calculated MW	32434

(RAT) Ccnd3 Antibody (N-term) - Additional Information

Gene ID 25193

Other Names

G1/S-specific cyclin-D3, Ccnd3

Target/Specificity

This rat Ccnd3 antibody is generated from a rabbit immunized with a KLH conjugated synthetic peptide between 33-66 amino acids from the N-terminal region of rat Ccnd3.

Dilution

WB~~1:500-1:1000

Format

Purified polyclonal antibody supplied in PBS with 0.09% (W/V) sodium azide. This antibody is purified through a protein A column, followed by peptide affinity purification.

Storage

Maintain refrigerated at 2-8°C for up to 2 weeks. For long term storage store at -20°C in small aliquots to prevent freeze-thaw cycles.

Precautions

(RAT) Ccnd3 Antibody (N-term) is for research use only and not for use in diagnostic or therapeutic procedures.

(RAT) Ccnd3 Antibody (N-term) - Protein Information

Name Ccnd3 {ECO:0000312|RGD:2293}

Function Regulatory component of the cyclin D3-CDK4 (DC) complex that phosphorylates and inhibits members of the retinoblastoma (RB) protein family including RB1 and regulates the cell-cycle during G(1)/S transition. Phosphorylation of RB1 allows dissociation of the transcription factor E2F from the RB/E2F complex and the subsequent transcription of E2F target genes which

are responsible for the progression through the G(1) phase. Hypophosphorylates RB1 in early G(1) phase. Cyclin D-CDK4 complexes are major integrators of various mitogenic and antimitogenic signals. Component of the ternary complex, cyclin D3/CDK4/CDKN1B, required for nuclear translocation and activity of the cyclin D-CDK4 complex. Shows transcriptional coactivator activity with ATF5 independently of CDK4.

Cellular Location

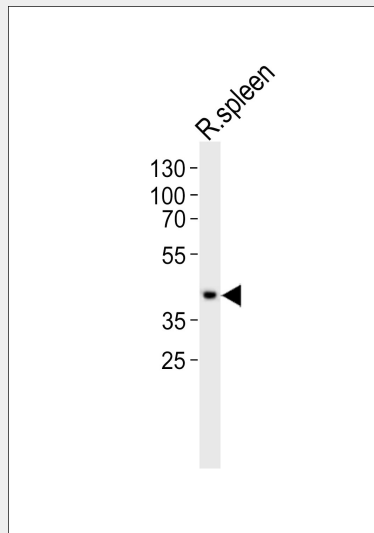
Nucleus {ECO:0000250|UniProtKB:P30281}. Cytoplasm {ECO:0000250|UniProtKB:P30281}

(RAT) Ccnd3 Antibody (N-term) - Protocols

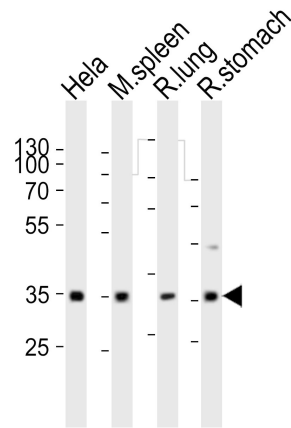
Provided below are standard protocols that you may find useful for product applications.

- [Western Blot](#)
- [Blocking Peptides](#)
- [Dot Blot](#)
- [Immunohistochemistry](#)
- [Immunofluorescence](#)
- [Immunoprecipitation](#)
- [Flow Cytometry](#)
- [Cell Culture](#)

(RAT) Ccnd3 Antibody (N-term) - Images



Western blot analysis of lysate from rat spleen tissue, using Ccnd3 Antibody (N-term)(Cat. #AP20912b). AP20912b was diluted at 1:1000. A goat anti-rabbit IgG H&L(HRP) at 1:10000 dilution was used as the secondary antibody. Lysate at 20ug.



Western blot analysis of lysates from HeLa cell line, mouse spleen, rat lung, rat stomach tissue (from left to right), using Ccnd3 Antibody (N-term)(Cat. #AP20912b). AP20912b was diluted at 1:1000 at each lane. A goat anti-rabbit IgG H&L(HRP) at 1:10000 dilution was used as the secondary antibody. Lysates at 20ug per lane.

(RAT) Ccnd3 Antibody (N-term) - Background

Regulatory component of the cyclin D3-CDK4 (DC) complex that phosphorylates and inhibits members of the retinoblastoma (RB) protein family including RB1 and regulates the cell-cycle during G(1)/S transition. Phosphorylation of RB1 allows dissociation of the transcription factor E2F from the RB/E2F complex and the subsequent transcription of E2F target genes which are responsible for the progression through the G(1) phase. Hypophosphorylates RB1 in early G(1) phase. Cyclin D-CDK4 complexes are major integrators of various mitogenic and antimitogenic signals. Also substrate for SMAD3, phosphorylating SMAD3 in a cell-cycle-dependent manner and repressing its transcriptional activity. Component of the ternary complex, cyclin D3/CDK4/CDKN1B, required for nuclear translocation and activity of the cyclin D-CDK4 complex.

(RAT) Ccnd3 Antibody (N-term) - References

Hosokawa Y.,et al.Gene 147:249-252(1994).
 Yang M.,et al.Gene 181:153-159(1996).