

**LIPI Antibody (Center)**  
**Purified Rabbit Polyclonal Antibody (Pab)**  
**Catalog # AP20877a**

**Specification**

---

**LIPI Antibody (Center) - Product Information**

Application	WB,E
Primary Accession	<a href="#">Q6XZB0</a>
Reactivity	Human
Host	Rabbit
Clonality	Polyclonal
Isotype	Rabbit IgG
Calculated MW	52922

**LIPI Antibody (Center) - Additional Information**

**Gene ID** 149998

**Other Names**

Lipase member I, LIPI, 311-, Cancer/testis antigen 17, CT17, LPD lipase, Membrane-associated phosphatidic acid-selective phospholipase A1-beta, mPA-PLA1 beta, LIPI, LPDL

**Target/Specificity**

This LIPI antibody is generated from a rabbit immunized with a KLH conjugated synthetic peptide between 224-258 amino acids from the Central region of human LIPI.

**Dilution**

WB~~1:1000

**Format**

Purified polyclonal antibody supplied in PBS with 0.09% (W/V) sodium azide. This antibody is purified through a protein A column, followed by peptide affinity purification.

**Storage**

Maintain refrigerated at 2-8°C for up to 2 weeks. For long term storage store at -20°C in small aliquots to prevent freeze-thaw cycles.

**Precautions**

LIPI Antibody (Center) is for research use only and not for use in diagnostic or therapeutic procedures.

**LIPI Antibody (Center) - Protein Information**

**Name** LIPI

**Synonyms** LPDL

**Function** Hydrolyzes specifically phosphatidic acid (PA) to produce 2- acyl lysophosphatidic acid

(LPA; a potent bioactive lipid mediator) and fatty acid. Does not hydrolyze other phospholipids, like phosphatidylserine (PS), phosphatidylcholine (PC) and phosphatidylethanolamine (PE) or triacylglycerol (TG).

#### Cellular Location

[Isoform 1]: Cell membrane. Secreted Note=May associate with lipid draft.

#### Tissue Location

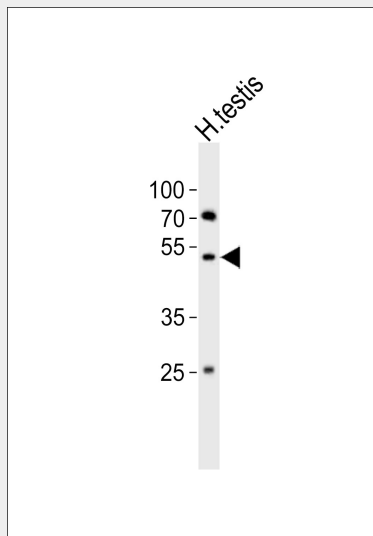
Expressed in testis. Expressed exclusively at the connecting piece of the sperm.

### LIPI Antibody (Center) - Protocols

Provided below are standard protocols that you may find useful for product applications.

- [Western Blot](#)
- [Blocking Peptides](#)
- [Dot Blot](#)
- [Immunohistochemistry](#)
- [Immunofluorescence](#)
- [Immunoprecipitation](#)
- [Flow Cytometry](#)
- [Cell Culture](#)

### LIPI Antibody (Center) - Images



Western blot analysis of lysate from human testis tissue lysate, using LIPI Antibody (Center)(Cat. #AP20877a). AP20877a was diluted at 1:1000. A goat anti-rabbit IgG H&L(HRP) at 1:10000 dilution was used as the secondary antibody. Lysate at 20ug.

### LIPI Antibody (Center) - Background

Hydrolyzes specifically phosphatidic acid (PA) to produce 2-acyl lysophosphatidic acid (LPA; a potent bioactive lipid mediator) and fatty acid. Does not hydrolyze other phospholipids, like phosphatidylserine (PS), phosphatidylcholine (PC) and phosphatidylethanolamine (PE) or triacylglycerol (TG).

### LIPI Antibody (Center) - References

Hiramatsu T., et al. J. Biol. Chem. 278:49438-49447(2003).  
Wen X.-Y., et al. Hum. Mol. Genet. 12:1131-1143(2003).  
Hattori M., et al. Nature 405:311-319(2000).