

CBX8 Antibody (C-term)
Purified Rabbit Polyclonal Antibody (Pab)
Catalog # AP20869c

Specification

CBX8 Antibody (C-term) - Product Information

Application	WB,E
Primary Accession	O9HC52
Other Accession	O90XV1
Reactivity	Mouse
Host	Rabbit
Clonality	Polyclonal
Isotype	Rabbit IgG
Calculated MW	43396

CBX8 Antibody (C-term) - Additional Information

Gene ID 57332

Other Names

Chromobox protein homolog 8, Polycomb 3 homolog, Pc3, hPc3, Rectachrome 1, CBX8, PC3, RC1

Target/Specificity

This CBX8 antibody is generated from a rabbit immunized with a KLH conjugated synthetic peptide between 374-409 amino acids from the C-terminal region of human CBX8.

Dilution

WB~~1:1000

Format

Purified polyclonal antibody supplied in PBS with 0.09% (W/V) sodium azide. This antibody is purified through a protein A column, followed by peptide affinity purification.

Storage

Maintain refrigerated at 2-8°C for up to 2 weeks. For long term storage store at -20°C in small aliquots to prevent freeze-thaw cycles.

Precautions

CBX8 Antibody (C-term) is for research use only and not for use in diagnostic or therapeutic procedures.

CBX8 Antibody (C-term) - Protein Information

Name CBX8

Synonyms PC3, RC1

Function Component of a Polycomb group (PcG) multiprotein PRC1-like complex, a complex class

required to maintain the transcriptionally repressive state of many genes, including Hox genes, throughout development. PcG PRC1 complex acts via chromatin remodeling and modification of histones; it mediates monoubiquitination of histone H2A 'Lys-119', rendering chromatin heritably changed in its expressibility.

Cellular Location

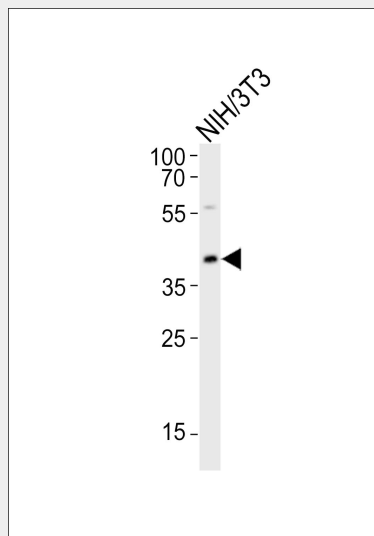
Nucleus.

CBX8 Antibody (C-term) - Protocols

Provided below are standard protocols that you may find useful for product applications.

- [Western Blot](#)
- [Blocking Peptides](#)
- [Dot Blot](#)
- [Immunohistochemistry](#)
- [Immunofluorescence](#)
- [Immunoprecipitation](#)
- [Flow Cytometry](#)
- [Cell Culture](#)

CBX8 Antibody (C-term) - Images



Western blot analysis of lysate from mouse NIH/3T3 cell line, using CBX8 Antibody (C-term)(Cat. #AP20869c). AP20869c was diluted at 1:1000. A goat anti-rabbit IgG H&L(HRP) at 1:10000 dilution was used as the secondary antibody. Lysate at 20ug.

CBX8 Antibody (C-term) - Background

Component of a Polycomb group (PcG) multiprotein PRC1- like complex, a complex class required to maintain the transcriptionally repressive state of many genes, including Hox genes, throughout development. PcG PRC1 complex acts via chromatin remodeling and modification of histones; it mediates monoubiquitination of histone H2A 'Lys-119', rendering chromatin heritably changed in its expressibility.

CBX8 Antibody (C-term) - References

Bardos J.I., et al. J. Biol. Chem. 275:28785-28792(2000).
Michael M.Z., et al. Submitted (DEC-2002) to the EMBL/GenBank/DDBJ databases.
Ota T., et al. Nat. Genet. 36:40-45(2004).
Garcia-Cuellar M.P., et al. Oncogene 20:411-419(2001).
Levine S.S., et al. Mol. Cell. Biol. 22:6070-6078(2002).