

**OTX2 Antibody (C-term)**  
**Purified Rabbit Polyclonal Antibody (Pab)**  
**Catalog # AP20865c****Specification**

---

**OTX2 Antibody (C-term) - Product Information**

Application	<b>WB, IHC-P,E</b>
Primary Accession	<a href="#">P32243</a>
Other Accession	<a href="#">Q64201</a> , <a href="#">P80206</a>
Reactivity	<b>Human</b>
Predicted	<b>Mouse, Rat</b>
Host	<b>Rabbit</b>
Clonality	<b>Polyclonal</b>
Isotype	<b>Rabbit IgG</b>
Calculated MW	<b>31636</b>

**OTX2 Antibody (C-term) - Additional Information****Gene ID** 5015**Other Names**

Homeobox protein OTX2, Orthodenticle homolog 2, OTX2

**Target/Specificity**

This OTX2 antibody is generated from a rabbit immunized with a KLH conjugated synthetic peptide between 201-226 amino acids from the C-terminal region of human OTX2.

**Dilution**

WB~~1:1000

IHC-P~~1:25

**Format**

Purified polyclonal antibody supplied in PBS with 0.09% (W/V) sodium azide. This antibody is purified through a protein A column, followed by peptide affinity purification.

**Storage**

Maintain refrigerated at 2-8°C for up to 2 weeks. For long term storage store at -20°C in small aliquots to prevent freeze-thaw cycles.

**Precautions**

OTX2 Antibody (C-term) is for research use only and not for use in diagnostic or therapeutic procedures.

**OTX2 Antibody (C-term) - Protein Information****Name** OTX2**Function** Transcription factor probably involved in the development of the brain and the sense

organs. Can bind to the bicoid/BCD target sequence (BTS): 5'-TCTAATCCC-3'.

#### Cellular Location

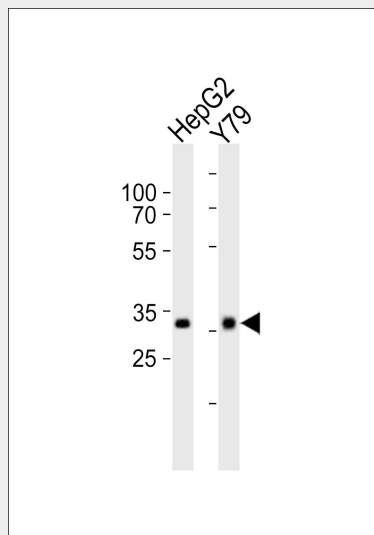
Nucleus.

#### OTX2 Antibody (C-term) - Protocols

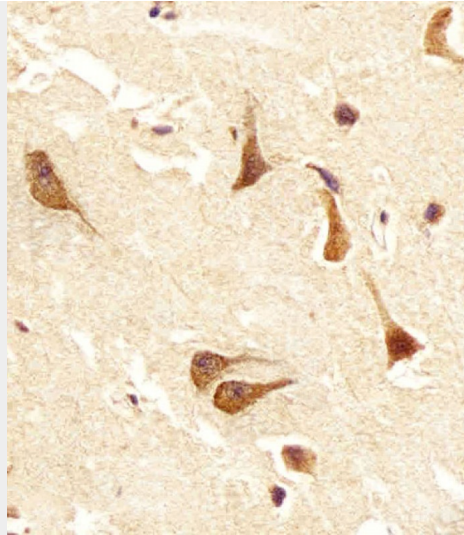
Provided below are standard protocols that you may find useful for product applications.

- [Western Blot](#)
- [Blocking Peptides](#)
- [Dot Blot](#)
- [Immunohistochemistry](#)
- [Immunofluorescence](#)
- [Immunoprecipitation](#)
- [Flow Cytometry](#)
- [Cell Culture](#)

#### OTX2 Antibody (C-term) - Images



Western blot analysis of lysates from HepG2, Y79 cell line (from left to right), using OTX2 Antibody (C-term)(Cat. #AP20865c). AP20865c was diluted at 1:1000 at each lane. A goat anti-rabbit IgG H&L(HRP) at 1:10000 dilution was used as the secondary antibody. Lysates at 20ug per lane.



Immunohistochemical analysis of paraffin-embedded H. brain section using OTX2 Antibody (C-term)(Cat#AP20865c). AP20865c was diluted at 1:25 dilution. A undiluted biotinylated goat polyvalent antibody was used as the secondary, followed by DAB staining.

#### **OTX2 Antibody (C-term) - Background**

Probably plays a role in the development of the brain and the sense organs. Can bind to the BCD target sequence (BTS): 5'-TCTAATCCC-3'.

#### **OTX2 Antibody (C-term) - References**

Simeone A.,et al.EMBO J. 12:2735-2747(1993).  
Perrault I.,et al.Submitted (AUG-2000) to the EMBL/GenBank/DDBJ databases.  
Fong S.L.,et al.Curr. Eye Res. 18:283-291(1999).  
Ota T.,et al.Nat. Genet. 36:40-45(2004).  
Mural R.J.,et al.Submitted (JUL-2005) to the EMBL/GenBank/DDBJ databases.