

(Mouse) Dlk1 Antibody (C-term)
Purified Rabbit Polyclonal Antibody (Pab)
Catalog # AP20860c

Specification

(Mouse) Dlk1 Antibody (C-term) - Product Information

Application	WB, FC,E
Primary Accession	Q09163
Reactivity	Mouse, Rat
Host	Rabbit
Clonality	Polyclonal
Isotype	Rabbit IgG
Calculated MW	41320

(Mouse) Dlk1 Antibody (C-term) - Additional Information

Gene ID 13386

Other Names

Protein delta homolog 1, DLK-1, Adipocyte differentiation inhibitor protein, Preadipocyte factor 1, Pref-1, Fetal antigen 1, FA1, Dlk1, Dlk, Pref1, Scp-1

Target/Specificity

This (Mouse) Dlk1 antibody is generated from a rabbit immunized with a KLH conjugated synthetic peptide between 372-405 amino acids from the C-terminal region of human (Mouse) Dlk1.

Dilution

WB~~1:500-1:1000

FC~~1:25

Format

Purified polyclonal antibody supplied in PBS with 0.09% (W/V) sodium azide. This antibody is purified through a protein A column, followed by peptide affinity purification.

Storage

Maintain refrigerated at 2-8°C for up to 2 weeks. For long term storage store at -20°C in small aliquots to prevent freeze-thaw cycles.

Precautions

(Mouse) Dlk1 Antibody (C-term) is for research use only and not for use in diagnostic or therapeutic procedures.

(Mouse) Dlk1 Antibody (C-term) - Protein Information

Name Dlk1

Synonyms Dlk, Pref1, Scp-1

Function May have a role in neuroendocrine differentiation. Inhibits adipocyte differentiation.

Cellular Location

Membrane; Single-pass type I membrane protein. Cytoplasm {ECO:0000250|UniProtKB:O70534}

Tissue Location

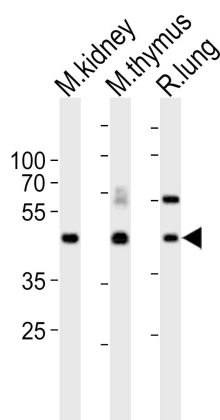
Highly expressed in fetal liver, placenta, adult adrenal gland, brain, testis and ovary and, to a lesser degree, in adult kidney, muscle, thymus and heart.

(Mouse) Dlk1 Antibody (C-term) - Protocols

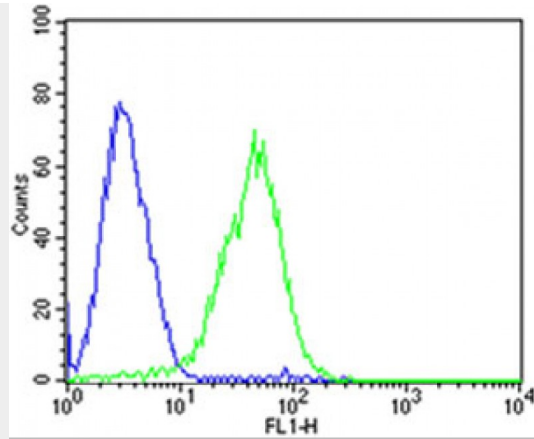
Provided below are standard protocols that you may find useful for product applications.

- [Western Blot](#)
- [Blocking Peptides](#)
- [Dot Blot](#)
- [Immunohistochemistry](#)
- [Immunofluorescence](#)
- [Immunoprecipitation](#)
- [Flow Cytometry](#)
- [Cell Culture](#)

(Mouse) Dlk1 Antibody (C-term) - Images



Western blot analysis of lysates from mouse kidney, mouse thymus, rat lung tissue lysate (from left to right), using Dlk1 Antibody (C-term)(Cat. #AP20860c). AP20860c was diluted at 1:1000 at each lane. A goat anti-rabbit IgG H&L(HRP) at 1:10000 dilution was used as the secondary antibody. Lysates at 20ug per lane.



Flow cytometric analysis of HepG2 cells using (Mouse) Dik1 Antibody (C-term)(green, Cat#AP20860c) compared to an isotype control of mouse IgG2b(blue). AP20860c was diluted at 1:25 dilution. An Alexa Fluor® 488 goat anti-mouse IgG at 1:400 dilution was used as the secondary antibody.

(Mouse) Dik1 Antibody (C-term) - Background

May have a role in neuroendocrine differentiation. Inhibits adipocyte differentiation.

(Mouse) Dik1 Antibody (C-term) - References

Laborda J.,et al.J. Biol. Chem. 268:3817-3820(1993).
Smas C.M.,et al.Cell 73:725-734(1993).
Lee Y.L.,et al.Biochim. Biophys. Acta 1261:223-232(1995).
Maruyama K.,et al.Submitted (AUG-1993) to the EMBL/GenBank/DDBJ databases.
Smas C.M.,et al.Biochemistry 33:9257-9265(1994).

(Mouse) Dik1 Antibody (C-term) - Citations

- [Administration of CoCl Improves Functional Recovery in a Rat Model of Sciatic Nerve Transection Injury.](#)