

**ABT1 Antibody (C-term)**  
**Purified Rabbit Polyclonal Antibody (Pab)**  
**Catalog # AP20859c****Specification**

---

**ABT1 Antibody (C-term) - Product Information**

Application	<b>WB,E</b>
Primary Accession	<a href="#">O9ULW3</a>
Reactivity	<b>Human</b>
Host	<b>Rabbit</b>
Clonality	<b>Polyclonal</b>
Isotype	<b>Rabbit IgG</b>
Calculated MW	<b>31079</b>

**ABT1 Antibody (C-term) - Additional Information****Gene ID** 29777**Other Names**

Activator of basal transcription 1, hABT1, Basal transcriptional activator, ABT1

**Target/Specificity**

This ABT1 antibody is generated from a rabbit immunized with a KLH conjugated synthetic peptide between 259-292 amino acids from the C-terminal region of human ABT1.

**Dilution**

WB~~1:1000

**Format**

Purified polyclonal antibody supplied in PBS with 0.09% (W/V) sodium azide. This antibody is purified through a protein A column, followed by peptide affinity purification.

**Storage**

Maintain refrigerated at 2-8°C for up to 2 weeks. For long term storage store at -20°C in small aliquots to prevent freeze-thaw cycles.

**Precautions**

ABT1 Antibody (C-term) is for research use only and not for use in diagnostic or therapeutic procedures.

**ABT1 Antibody (C-term) - Protein Information****Name** ABT1**Function** Could be a novel TATA-binding protein (TBP) which can function as a basal transcription activator. Can act as a regulator of basal transcription for class II genes (By similarity).**Cellular Location**

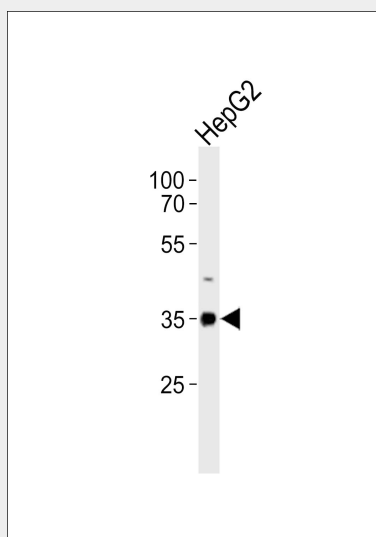
Nucleus. Nucleus, nucleolus

### ABT1 Antibody (C-term) - Protocols

Provided below are standard protocols that you may find useful for product applications.

- [Western Blot](#)
- [Blocking Peptides](#)
- [Dot Blot](#)
- [Immunohistochemistry](#)
- [Immunofluorescence](#)
- [Immunoprecipitation](#)
- [Flow Cytometry](#)
- [Cell Culture](#)

### ABT1 Antibody (C-term) - Images



Western blot analysis of lysate from HepG2 cell line, using ABT1 Antibody (C-term)(Cat. #AP20859c). AP20859c was diluted at 1:1000. A goat anti-rabbit IgG H&L(HRP) at 1:10000 dilution was used as the secondary antibody. Lysate at 20ug.

### ABT1 Antibody (C-term) - Background

Could be a novel TATA-binding protein (TBP) which can function as a basal transcription activator. Can act as a regulator of basal transcription for class II genes (By similarity).

### ABT1 Antibody (C-term) - References

- Oda T.,et al.Mol. Cell. Biol. 20:1407-1418(2000).  
Mungall A.J.,et al.Nature 425:805-811(2003).  
Gauci S.,et al.Anal. Chem. 81:4493-4501(2009).  
de Planell-Saguer M.,et al.Hum. Mol. Genet. 18:2115-2126(2009).  
Burkard T.R.,et al.BMC Syst. Biol. 5:17-17(2011).