

**POLR2H Antibody (N-term)**  
**Purified Rabbit Polyclonal Antibody (Pab)**  
**Catalog # AP20815a**

**Specification**

---

**POLR2H Antibody (N-term) - Product Information**

Application	WB,E
Primary Accession	<a href="#">P52434</a>
Other Accession	<a href="#">O923G2</a>
Reactivity	Human, Mouse
Host	Rabbit
Clonality	Polyclonal
Isotype	Rabbit IgG

**POLR2H Antibody (N-term) - Additional Information**

**Gene ID** 5437

**Other Names**

DNA-directed RNA polymerases I, II, and III subunit RPABC3, RNA polymerases I, II, and III subunit ABC3, DNA-directed RNA polymerase II subunit H, DNA-directed RNA polymerases I, II, and III 171 kDa polypeptide, RPB17, RPB8 homolog, hRPB8, POLR2H

**Target/Specificity**

This POLR2H antibody is generated from a rabbit immunized with a KLH conjugated synthetic peptide between 16-50 amino acids from the N-terminal region of human POLR2H.

**Dilution**

WB~~1:1000

**Format**

Purified polyclonal antibody supplied in PBS with 0.09% (W/V) sodium azide. This antibody is purified through a protein A column, followed by peptide affinity purification.

**Storage**

Maintain refrigerated at 2-8°C for up to 2 weeks. For long term storage store at -20°C in small aliquots to prevent freeze-thaw cycles.

**Precautions**

POLR2H Antibody (N-term) is for research use only and not for use in diagnostic or therapeutic procedures.

**POLR2H Antibody (N-term) - Protein Information**

**Name** POLR2H ([HGNC:9195](#))

**Function** DNA-dependent RNA polymerase catalyzes the transcription of DNA into RNA using the four ribonucleoside triphosphates as substrates. Common component of RNA polymerases I, II and

III which synthesize ribosomal RNA precursors, mRNA precursors and many functional non-coding RNAs, and small RNAs, such as 5S rRNA and tRNAs, respectively.

#### Cellular Location

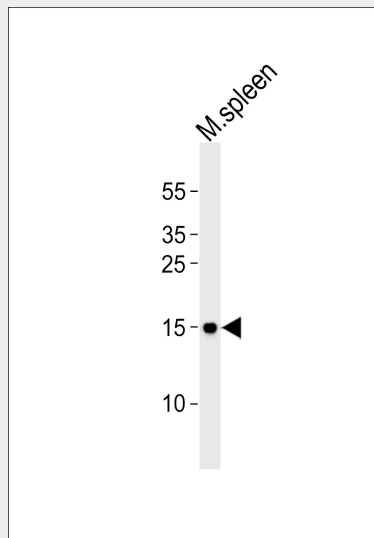
Nucleus {ECO:0000269|PubMed:33335104, ECO:0000269|PubMed:9852112, ECO:0000269|Ref.6}.  
Nucleus, nucleolus

#### POLR2H Antibody (N-term) - Protocols

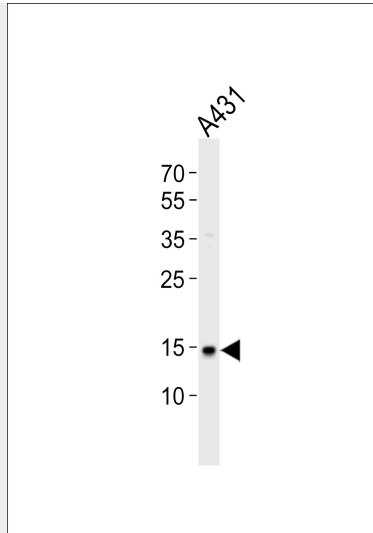
Provided below are standard protocols that you may find useful for product applications.

- [Western Blot](#)
- [Blocking Peptides](#)
- [Dot Blot](#)
- [Immunohistochemistry](#)
- [Immunofluorescence](#)
- [Immunoprecipitation](#)
- [Flow Cytometry](#)
- [Cell Culture](#)

#### POLR2H Antibody (N-term) - Images



Western blot analysis of lysate from mouse spleen tissue lysate, using POLR2H Antibody (N-term)(Cat. #AP20815a). AP20815a was diluted at 1:1000. A goat anti-rabbit IgG H&L(HRP) at 1:10000 dilution was used as the secondary antibody. Lysate at 35ug.



Western blot analysis of lysate from A431 cell line, using POLR2H Antibody (N-term)(Cat. #AP20815a). AP20815a was diluted at 1:1000. A goat anti-rabbit IgG H&L(HRP) at 1:10000 dilution was used as the secondary antibody. Lysate at 20ug.

#### **POLR2H Antibody (N-term) - Background**

DNA-dependent RNA polymerase catalyzes the transcription of DNA into RNA using the four ribonucleoside triphosphates as substrates. Common component of RNA polymerases I, II and III which synthesize ribosomal RNA precursors, mRNA precursors and many functional non-coding RNAs, and small RNAs, such as 5S rRNA and tRNAs, respectively.

#### **POLR2H Antibody (N-term) - References**

McKune K.,et al.Mol. Cell. Biol. 15:6895-6900(1995).  
Shpakovski G.V.,et al.Mol. Cell. Biol. 15:4702-4710(1995).  
Shpakovski G.V.,et al.Submitted (DEC-1999) to the EMBL/GenBank/DDBJ databases.  
Bienvenut W.V.,et al.Submitted (AUG-2005) to UniProtKB.  
Kershner E.,et al.J. Biol. Chem. 273:34444-34453(1998).

#### **POLR2H Antibody (N-term) - Citations**

- [Dysregulation of a novel miR-1825/TBCB/TUBA4A pathway in sporadic and familial ALS.](#)