

CRYBB2 Antibody (N-term)
Purified Rabbit Polyclonal Antibody (Pab)
Catalog # AP20795a**Specification**

CRYBB2 Antibody (N-term) - Product Information

Application	WB,E
Primary Accession	P43320
Reactivity	Human
Host	Rabbit
Clonality	Polyclonal
Isotype	Rabbit IgG
Calculated MW	23380

CRYBB2 Antibody (N-term) - Additional Information**Gene ID** 1415**Other Names**

Beta-crystallin B2, Beta-B2 crystallin, Beta-crystallin Bp, CRYBB2, CRYB2, CRYB2A

Target/Specificity

This CRYBB2 antibody is generated from a rabbit immunized with a KLH conjugated synthetic peptide between 4-36 amino acids from the N-terminal region of human CRYBB2.

Dilution

WB~~1:1000

Format

Purified polyclonal antibody supplied in PBS with 0.09% (W/V) sodium azide. This antibody is purified through a protein A column, followed by peptide affinity purification.

Storage

Maintain refrigerated at 2-8°C for up to 2 weeks. For long term storage store at -20°C in small aliquots to prevent freeze-thaw cycles.

Precautions

CRYBB2 Antibody (N-term) is for research use only and not for use in diagnostic or therapeutic procedures.

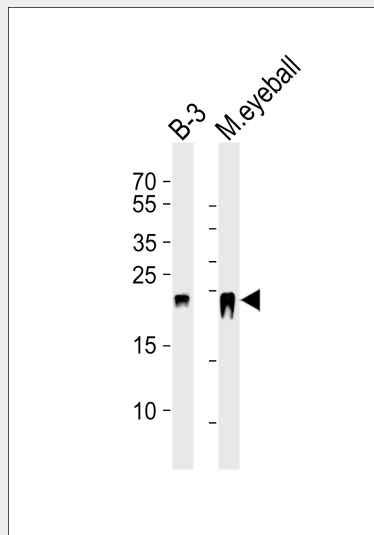
CRYBB2 Antibody (N-term) - Protein Information**Name** CRYBB2**Synonyms** CRYB2, CRYB2A**Function** Crystallins are the dominant structural components of the vertebrate eye lens.

CRYBB2 Antibody (N-term) - Protocols

Provided below are standard protocols that you may find useful for product applications.

- [Western Blot](#)
- [Blocking Peptides](#)
- [Dot Blot](#)
- [Immunohistochemistry](#)
- [Immunofluorescence](#)
- [Immunoprecipitation](#)
- [Flow Cytometry](#)
- [Cell Culture](#)

CRYBB2 Antibody (N-term) - Images



Western blot analysis of lysates from B-3 cell line and mouse eyeball tissue lysate (from left to right), using CRYBB2 Antibody (N-term) (Cat. #AP20795a). AP20795a was diluted at 1:1000 at each lane. A goat anti-rabbit IgG H&L(HRP) at 1:5000 dilution was used as the secondary antibody. Lysates at 35ug per lane.

CRYBB2 Antibody (N-term) - Background

Crystallins are the dominant structural components of the vertebrate eye lens.

CRYBB2 Antibody (N-term) - References

- Chambers C., et al. *Gene* 133:295-299(1993).
Litt M., et al. *Hum. Mol. Genet.* 6:665-668(1997).
Collins J.E., et al. *Genome Biol.* 5:R84.1-R84.11(2004).
Dunham I., et al. *Nature* 402:489-495(1999).
Miesbauer L.R., et al. *Protein Sci.* 2:290-291(1993).