

PRPF6 Antibody (N-term)
Purified Rabbit Polyclonal Antibody (Pab)
Catalog # AP20777a

Specification

PRPF6 Antibody (N-term) - Product Information

| | |
|-------------------|--|
| Application | WB,E |
| Primary Accession | O94906 |
| Other Accession | A1A5S1 , Q91YR7 , Q2KJJ0 |
| Reactivity | Human, Mouse |
| Predicted | Bovine, Rat |
| Host | Rabbit |
| Clonality | Polyclonal |
| Isotype | Rabbit IgG |
| Calculated MW | 106925 |

PRPF6 Antibody (N-term) - Additional Information

Gene ID 24148

Other Names

Pre-mRNA-processing factor 6, Androgen receptor N-terminal domain-transactivating protein 1, ANT-1, PRP6 homolog, U5 snRNP-associated 102 kDa protein, U5-102 kDa protein, PRPF6, C20orf14

Target/Specificity

This PRPF6 antibody is generated from a rabbit immunized with a KLH conjugated synthetic peptide between 196-229 amino acids from the N-terminal region of human PRPF6.

Dilution

WB~~1:6000

Format

Purified polyclonal antibody supplied in PBS with 0.09% (W/V) sodium azide. This antibody is purified through a protein A column, followed by peptide affinity purification.

Storage

Maintain refrigerated at 2-8°C for up to 2 weeks. For long term storage store at -20°C in small aliquots to prevent freeze-thaw cycles.

Precautions

PRPF6 Antibody (N-term) is for research use only and not for use in diagnostic or therapeutic procedures.

PRPF6 Antibody (N-term) - Protein Information

Name PRPF6 ([HGNC:15860](#))

Synonyms C20orf14

Function Involved in pre-mRNA splicing as component of the U4/U6-U5 tri-snRNP complex, one of the building blocks of the spliceosome (PubMed:[20118938](#), PubMed:[21549338](#), PubMed:[28781166](#)). Enhances dihydrotestosterone-induced transactivation activity of AR, as well as dexamethasone-induced transactivation activity of NR3C1, but does not affect estrogen-induced transactivation.

Cellular Location

Nucleus, nucleoplasm. Nucleus speckle. Note=Localized in splicing speckles.

Tissue Location

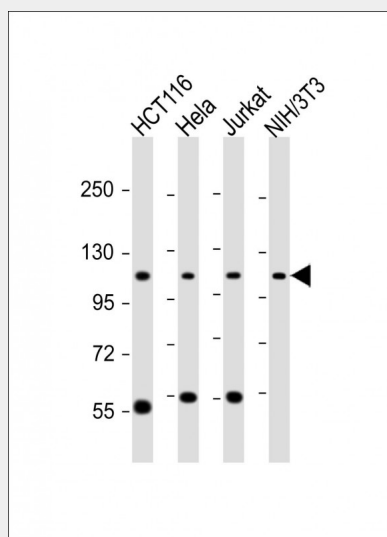
Widely expressed..

PRPF6 Antibody (N-term) - Protocols

Provided below are standard protocols that you may find useful for product applications.

- [Western Blot](#)
- [Blocking Peptides](#)
- [Dot Blot](#)
- [Immunohistochemistry](#)
- [Immunofluorescence](#)
- [Immunoprecipitation](#)
- [Flow Cytometry](#)
- [Cell Culture](#)

PRPF6 Antibody (N-term) - Images



All lanes : Anti-PRPF6 Antibody (N-term) at 1:6000 dilution Lane 1: HCT116 whole cell lysate Lane 2: HeLa whole cell lysate Lane 3: Jurka twhole cell lysate Lane 4: NIH/3T3 whole cell lysate Lysates/proteins at 20 µg per lane. Secondary Goat Anti-Rabbit IgG, (H+L), Peroxidase conjugated at 1/10000 dilution. Predicted band size : 107 kDa Blocking/Dilution buffer: 5% NFD/MTBST.

PRPF6 Antibody (N-term) - Background

Involved in pre-mRNA splicing as component of the U4/U6- U5 tri-snRNP complex, one of the

building blocks of the spliceosome. Enhances dihydrotestosterone-induced transactivation activity of AR, as well as dexamethasone-induced transactivation activity of NR3C1, but does not affect estrogen-induced transactivation.

PRPF6 Antibody (N-term) - References

- Nishikimi A., et al. *Biochim. Biophys. Acta* 1435:147-152(1999).
Makarov E.M., et al. *J. Mol. Biol.* 298:567-575(2000).
Yuryev A., et al. *Mol. Cell. Biol.* 20:4870-4878(2000).
Ota T., et al. *Nat. Genet.* 36:40-45(2004).
Deloukas P., et al. *Nature* 414:865-871(2001).