

CYCS Antibody (Center)
Purified Rabbit Polyclonal Antibody (Pab)
Catalog # AP20772c

Specification

CYCS Antibody (Center) - Product Information

Application	WB,E
Primary Accession	P99999
Other Accession	P62898 , P00008 , P62895 , P62897 , P67881 , P62894 , Q6DKE1 , P00004 , P62896
Reactivity	Human
Predicted	Xenopus, Bovine, Chicken, Horse, Mouse, Pig, Rabbit, Rat, Sheep
Host	Rabbit
Clonality	Polyclonal
Isotype	Rabbit IgG
Calculated MW	11749

CYCS Antibody (Center) - Additional Information

Gene ID 54205

Other Names

Cytochrome c, CYCS, CYC

Target/Specificity

This CYCS antibody is generated from a rabbit immunized with a KLH conjugated synthetic peptide between 21-55 amino acids from the Central region of human CYCS.

Dilution

WB~~1:1000

Format

Purified polyclonal antibody supplied in PBS with 0.09% (W/V) sodium azide. This antibody is purified through a protein A column, followed by peptide affinity purification.

Storage

Maintain refrigerated at 2-8°C for up to 2 weeks. For long term storage store at -20°C in small aliquots to prevent freeze-thaw cycles.

Precautions

CYCS Antibody (Center) is for research use only and not for use in diagnostic or therapeutic procedures.

CYCS Antibody (Center) - Protein Information

Name CYCS

Synonyms CYC

Function Electron carrier protein. The oxidized form of the cytochrome c heme group can accept an electron from the heme group of the cytochrome c1 subunit of cytochrome reductase. Cytochrome c then transfers this electron to the cytochrome oxidase complex, the final protein carrier in the mitochondrial electron-transport chain.

Cellular Location

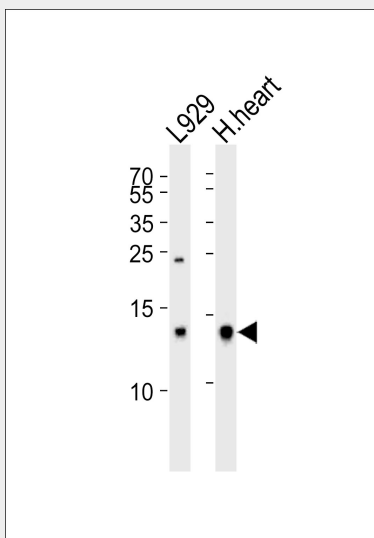
Mitochondrion intermembrane space. Note=Loosely associated with the inner membrane

CYCS Antibody (Center) - Protocols

Provided below are standard protocols that you may find useful for product applications.

- [Western Blot](#)
- [Blocking Peptides](#)
- [Dot Blot](#)
- [Immunohistochemistry](#)
- [Immunofluorescence](#)
- [Immunoprecipitation](#)
- [Flow Cytometry](#)
- [Cell Culture](#)

CYCS Antibody (Center) - Images



Western blot analysis of lysates from L929 cell line and human heart tissue lysate (from left to right), using CYCS Antibody (Center) (Cat. #AP20772c). AP20772c was diluted at 1:1000 at each lane. A goat anti-rabbit IgG H&L (HRP) at 1:5000 dilution was used as the secondary antibody. Lysates at 35 µg per lane.

CYCS Antibody (Center) - Background

Electron carrier protein. The oxidized form of the cytochrome c heme group can accept an electron from the heme group of the cytochrome c1 subunit of cytochrome reductase. Cytochrome c then transfers this electron to the cytochrome oxidase complex, the final protein carrier in the mitochondrial electron-transport chain.

CYCS Antibody (Center) - References

Evans M.J.,et al.Proc. Natl. Acad. Sci. U.S.A. 85:9625-9629(1988).
Kalnine N.,et al.Submitted (MAY-2003) to the EMBL/GenBank/DDBJ databases.
Ota T.,et al.Nat. Genet. 36:40-45(2004).
Bechtel S.,et al.BMC Genomics 8:399-399(2007).
Hillier L.W.,et al.Nature 424:157-164(2003).

CYCS Antibody (Center) - Citations

- [Mitochondrial transplantation reduces lower limb ischemia-reperfusion injury by increasing skeletal muscle energy and adipocyte browning](#)