

**CTDSP1 Antibody (N-term)**  
**Purified Rabbit Polyclonal Antibody (Pab)**  
**Catalog # AP20752a**

**Specification**

---

**CTDSP1 Antibody (N-term) - Product Information**

Application	WB,E
Primary Accession	<a href="#">O9GZU7</a>
Reactivity	Human, Mouse
Host	Rabbit
Clonality	Polyclonal
Isotype	Rabbit IgG
Calculated MW	29203

**CTDSP1 Antibody (N-term) - Additional Information**

**Gene ID** 58190

**Other Names**

Carboxy-terminal domain RNA polymerase II polypeptide A small phosphatase 1, Nuclear LIM interactor-interacting factor 3, NLI-IF, NLI-interacting factor 3, Small C-terminal domain phosphatase 1, SCP1, Small CTD phosphatase 1, CTDSP1, NIF3, NLIIF, SCP1

**Target/Specificity**

This CTDSP1 antibody is generated from a rabbit immunized with a KLH conjugated synthetic peptide between 16-50 amino acids from the N-terminal region of human CTDSP1.

**Dilution**

WB~~1:1000

**Format**

Purified polyclonal antibody supplied in PBS with 0.09% (W/V) sodium azide. This antibody is purified through a protein A column, followed by peptide affinity purification.

**Storage**

Maintain refrigerated at 2-8°C for up to 2 weeks. For long term storage store at -20°C in small aliquots to prevent freeze-thaw cycles.

**Precautions**

CTDSP1 Antibody (N-term) is for research use only and not for use in diagnostic or therapeutic procedures.

**CTDSP1 Antibody (N-term) - Protein Information**

**Name** CTDSP1

**Synonyms** NIF3, NLIIF, SCP1

**Function** Preferentially catalyzes the dephosphorylation of 'Ser-5' within the tandem 7 residue repeats in the C-terminal domain (CTD) of the largest RNA polymerase II subunit POLR2A. Negatively regulates RNA polymerase II transcription, possibly by controlling the transition from initiation/capping to processive transcript elongation. Recruited by REST to neuronal genes that contain RE-1 elements, leading to neuronal gene silencing in non-neuronal cells.

**Cellular Location**

Nucleus. Note=Colocalizes with RNA polymerase II

**Tissue Location**

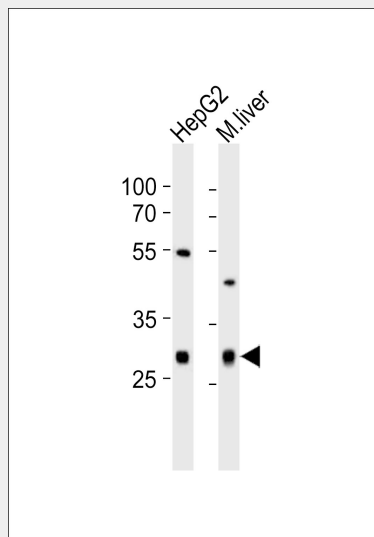
Expression is restricted to non-neuronal tissues. Highest expression in skeletal muscle, spleen, lung and placenta

**CTDSP1 Antibody (N-term) - Protocols**

Provided below are standard protocols that you may find useful for product applications.

- [Western Blot](#)
- [Blocking Peptides](#)
- [Dot Blot](#)
- [Immunohistochemistry](#)
- [Immunofluorescence](#)
- [Immunoprecipitation](#)
- [Flow Cytometry](#)
- [Cell Culture](#)

**CTDSP1 Antibody (N-term) - Images**



Western blot analysis of lysates from HepG2 cell line, mouse liver tissue lysate (from left to right), using CTDSP1 Antibody (N-term)(Cat. #AP20752a). AP20752a was diluted at 1:1000 at each lane. A goat anti-rabbit IgG H&L(HRP) at 1:10000 dilution was used as the secondary antibody. Lysates at 20ug per lane.

**CTDSP1 Antibody (N-term) - Background**

Preferentially catalyzes the dephosphorylation of 'Ser- 5' within the tandem 7 residues repeats in the C-terminal domain (CTD) of the largest RNA polymerase II subunit POLR2A. Negatively regulates

RNA polymerase II transcription, possibly by controlling the transition from initiation/capping to processive transcript elongation. Recruited by REST to neuronal genes that contain RE-1 elements, leading to neuronal gene silencing in non-neuronal cells.

#### **CTDSP1 Antibody (N-term) - References**

- Marquet S., et al. *Mamm. Genome* 11:755-762(2000).  
Yeo M., et al. *J. Biol. Chem.* 278:26078-26085(2003).  
Li W.B., et al. Submitted (APR-2003) to the EMBL/GenBank/DDBJ databases.  
Hillier L.W., et al. *Nature* 434:724-731(2005).  
Yeo M., et al. *Science* 307:596-600(2005).