

MT-ND1 Antibody (N-term)
Purified Rabbit Polyclonal Antibody (Pab)
Catalog # AP20750a

Specification

MT-ND1 Antibody (N-term) - Product Information

Application	WB,E
Primary Accession	P03886
Other Accession	O79874 , P03887 , O78747
Reactivity	Human
Predicted	Bovine, Pig, Sheep
Host	Rabbit
Clonality	Polyclonal
Isotype	Rabbit IgG
Calculated MW	35661

MT-ND1 Antibody (N-term) - Additional Information

Gene ID 4535

Other Names

NADH-ubiquinone oxidoreductase chain 1, NADH dehydrogenase subunit 1, MT-ND1, MTND1, NADH1, ND1

Target/Specificity

This MT-ND1 antibody is generated from a rabbit immunized with a KLH conjugated synthetic peptide between 34-68 amino acids from the N-terminal region of human MT-ND1.

Dilution

WB~~1:1000

Format

Purified polyclonal antibody supplied in PBS with 0.09% (W/V) sodium azide. This antibody is purified through a protein A column, followed by peptide affinity purification.

Storage

Maintain refrigerated at 2-8°C for up to 2 weeks. For long term storage store at -20°C in small aliquots to prevent freeze-thaw cycles.

Precautions

MT-ND1 Antibody (N-term) is for research use only and not for use in diagnostic or therapeutic procedures.

MT-ND1 Antibody (N-term) - Protein Information

Name MT-ND1

Synonyms MTND1, NADH1, ND1

Function Core subunit of the mitochondrial membrane respiratory chain NADH dehydrogenase (Complex I) which catalyzes electron transfer from NADH through the respiratory chain, using ubiquinone as an electron acceptor (PubMed:[1959619](#)). Essential for the catalytic activity and assembly of complex I (PubMed:[1959619](#), PubMed:[26929434](#)).

Cellular Location

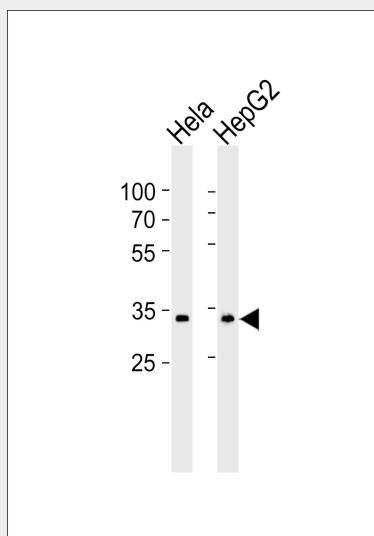
Mitochondrion inner membrane {ECO:0000250|UniProtKB:P03887}; Multi-pass membrane protein

MT-ND1 Antibody (N-term) - Protocols

Provided below are standard protocols that you may find useful for product applications.

- [Western Blot](#)
- [Blocking Peptides](#)
- [Dot Blot](#)
- [Immunohistochemistry](#)
- [Immunofluorescence](#)
- [Immunoprecipitation](#)
- [Flow Cytometry](#)
- [Cell Culture](#)

MT-ND1 Antibody (N-term) - Images



Western blot analysis of lysates from HeLa, HepG2 cell line (from left to right), using MT-ND1 Antibody (N-term)(Cat. #AP20750a). AP20750a was diluted at 1:1000 at each lane. A goat anti-rabbit IgG H&L(HRP) at 1:5000 dilution was used as the secondary antibody. Lysates at 35ug per lane.

MT-ND1 Antibody (N-term) - Background

Core subunit of the mitochondrial membrane respiratory chain NADH dehydrogenase (Complex I) that is believed to belong to the minimal assembly required for catalysis. Complex I functions in the transfer of electrons from NADH to the respiratory chain. The immediate electron acceptor for the enzyme is believed to be ubiquinone (By similarity).

MT-ND1 Antibody (N-term) - References

Anderson S.,et al.Nature 290:457-465(1981).
Horai S.,et al.Proc. Natl. Acad. Sci. U.S.A. 92:532-536(1995).
Moilanen J.S.,et al.Mol. Biol. Evol. 20:2132-2142(2003).
Ingman M.,et al.Nature 408:708-713(2000).
Ingman M.,et al.Genome Res. 13:1600-1606(2003).