

**CHCHD3 Antibody (Center)**  
**Purified Rabbit Polyclonal Antibody (Pab)**  
**Catalog # AP20731c****Specification**

---

**CHCHD3 Antibody (Center) - Product Information**

Application	<b>WB,E</b>
Primary Accession	<a href="#">O9NX63</a>
Reactivity	<b>Human</b>
Host	<b>Rabbit</b>
Clonality	<b>Polyclonal</b>
Isotype	<b>Rabbit IgG</b>
Calculated MW	<b>26152</b>

**CHCHD3 Antibody (Center) - Additional Information****Gene ID** 54927**Other Names**

MICOS complex subunit MIC19, Coiled-coil-helix-coiled-coil-helix domain-containing protein 3, CHCHD3, MIC19, MINOS3

**Target/Specificity**

This CHCHD3 antibody is generated from a rabbit immunized with a KLH conjugated synthetic peptide between 83-116 amino acids from the Central region of human CHCHD3.

**Dilution**

WB~~1:1000

**Format**

Purified polyclonal antibody supplied in PBS with 0.09% (W/V) sodium azide. This antibody is purified through a protein A column, followed by peptide affinity purification.

**Storage**

Maintain refrigerated at 2-8°C for up to 2 weeks. For long term storage store at -20°C in small aliquots to prevent freeze-thaw cycles.

**Precautions**

CHCHD3 Antibody (Center) is for research use only and not for use in diagnostic or therapeutic procedures.

**CHCHD3 Antibody (Center) - Protein Information****Name** CHCHD3**Synonyms** MIC19, MINOS3**Function** Component of the MICOS complex, a large protein complex of the mitochondrial inner

membrane that plays crucial roles in the maintenance of crista junctions, inner membrane architecture, and formation of contact sites to the outer membrane (PubMed:[25781180](#), PubMed:[32567732](#), PubMed:[33130824](#)). Plays an important role in the maintenance of the MICOS complex stability and the mitochondrial cristae morphology (PubMed:[25781180](#), PubMed:[32567732](#), PubMed:[33130824](#)). Has also been shown to function as a transcription factor which binds to the BAG1 promoter and represses BAG1 transcription (PubMed:[22567091](#)).

#### Cellular Location

Mitochondrion inner membrane {ECO:0000250|UniProtKB:Q9CRB9}; Lipid-anchor; Intermembrane side {ECO:0000250|UniProtKB:Q9CRB9}. Cytoplasm. Nucleus Mitochondrion

#### Tissue Location

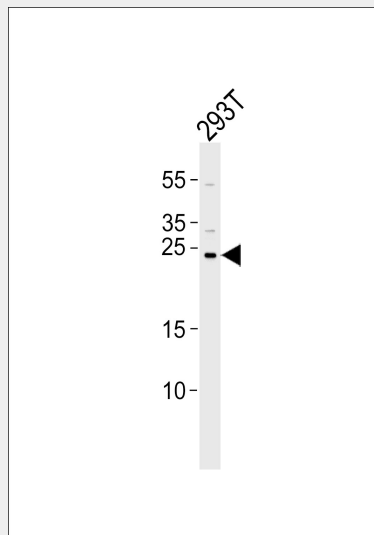
Detected at low levels in brain, placenta, lung, liver, kidney and pancreas with increased levels in heart and skeletal muscle. Higher expression in primary lung cancers than in normal lung tissue.

### CHCHD3 Antibody (Center) - Protocols

Provided below are standard protocols that you may find useful for product applications.

- [Western Blot](#)
- [Blocking Peptides](#)
- [Dot Blot](#)
- [Immunohistochemistry](#)
- [Immunofluorescence](#)
- [Immunoprecipitation](#)
- [Flow Cytometry](#)
- [Cell Culture](#)

### CHCHD3 Antibody (Center) - Images



Western blot analysis of lysate from 293T cell line, using CHCHD3 Antibody (Center)(Cat. #AP20731c). AP20731c was diluted at 1:1000. A goat anti-rabbit IgG H&L(HRP) at 1:5000 dilution was used as the secondary antibody. Lysate at 35ug.

### CHCHD3 Antibody (Center) - Background

Required for maintenance of mitochondrial crista integrity and mitochondrial function. May act as

a scaffolding protein that stabilizes protein complexes involved in crista architecture and protein import. Has also been shown to function as a transcription factor which binds to the BAG1 promoter and represses BAG1 transcription.

#### **CHCHD3 Antibody (Center) - References**

- Ota T., et al. Nat. Genet. 36:40-45(2004).  
Daub H., et al. Mol. Cell 31:438-448(2008).  
Dephoure N., et al. Proc. Natl. Acad. Sci. U.S.A. 105:10762-10767(2008).  
Mayya V., et al. Sci. Signal. 2:RA46-RA46(2009).  
Choudhary C., et al. Science 325:834-840(2009).