

HUMAN-GAB1(Y259) Antibody
Purified Rabbit Polyclonal Antibody (Pab)
Catalog # AP20723b

Specification

HUMAN-GAB1(Y259) Antibody - Product Information

Application	WB,E
Primary Accession	O13480
Reactivity	Human
Host	Rabbit
Clonality	Polyclonal
Isotype	Rabbit IgG

HUMAN-GAB1(Y259) Antibody - Additional Information

Gene ID 2549

Other Names

GRB2-associated-binding protein 1, GRB2-associated binder 1, Growth factor receptor bound protein 2-associated protein 1, GAB1

Target/Specificity

This antibody is generated from a rabbit immunized with a KLH conjugated synthetic peptide between 250-285 amino acids from human.

Dilution

WB~~1:1000

Format

Purified polyclonal antibody supplied in PBS with 0.09% (W/V) sodium azide. This antibody is purified through a protein A column, followed by peptide affinity purification.

Storage

Maintain refrigerated at 2-8°C for up to 2 weeks. For long term storage store at -20°C in small aliquots to prevent freeze-thaw cycles.

Precautions

HUMAN-GAB1(Y259) Antibody is for research use only and not for use in diagnostic or therapeutic procedures.

HUMAN-GAB1(Y259) Antibody - Protein Information

Name GAB1

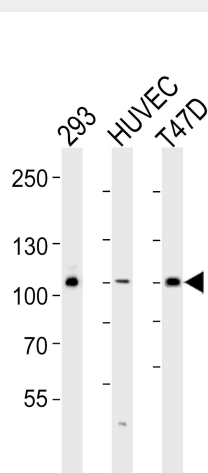
Function Adapter protein that plays a role in intracellular signaling cascades triggered by activated receptor-type kinases. Plays a role in FGFR1 signaling. Probably involved in signaling by the epidermal growth factor receptor (EGFR) and the insulin receptor (INSR). Involved in the MET/HGF-signaling pathway (PubMed:[29408807](#)).

HUMAN-GAB1(Y259) Antibody - Protocols

Provided below are standard protocols that you may find useful for product applications.

- [Western Blot](#)
- [Blocking Peptides](#)
- [Dot Blot](#)
- [Immunohistochemistry](#)
- [Immunofluorescence](#)
- [Immunoprecipitation](#)
- [Flow Cytometry](#)
- [Cell Culture](#)

HUMAN-GAB1(Y259) Antibody - Images



Western blot analysis of lysates from 293, HUVEC, T47D cell line (from left to right), using HUMAN-GAB1(Y259) (Cat. #AP20723b). AP20723b was diluted at 1:1000 at each lane. A goat anti-rabbit IgG H&L(HRP) at 1:5000 dilution was used as the secondary antibody. Lysates at 35ug per lane.

HUMAN-GAB1(Y259) Antibody - Background

Adapter protein that plays a role in intracellular signaling cascades triggered by activated receptor-type kinases. Plays a role in FGFR1 signaling. Probably involved in signaling by the epidermal growth factor receptor (EGFR) and the insulin receptor (INSR).

HUMAN-GAB1(Y259) Antibody - References

- Holgado-Madruga M., et al. Nature 379:560-564(1996).
Ota T., et al. Nat. Genet. 36:40-45(2004).
Hillier L.W., et al. Nature 434:724-731(2005).
Mural R.J., et al. Submitted (SEP-2005) to the EMBL/GenBank/DDBJ databases.
Brdicka T., et al. J. Exp. Med. 196:1617-1626(2002).