

**GP1BA(Glycocalicin) Antibody (Center)**  
**Purified Rabbit Polyclonal Antibody (Pab)**  
**Catalog # AP20720c**

**Specification**

---

**GP1BA(Glycocalicin) Antibody (Center) - Product Information**

Application	<b>WB,E</b>
Primary Accession	<a href="#">P07359</a>
Reactivity	<b>Human</b>
Host	<b>Rabbit</b>
Clonality	<b>Polyclonal</b>
Isotype	<b>Rabbit IgG</b>

**GP1BA(Glycocalicin) Antibody (Center) - Additional Information**

**Gene ID** 2811

**Other Names**

Platelet glycoprotein Ib alpha chain, GP-Ib alpha, GPIb-alpha, GPIbA, Glycoprotein Ibalpha, Antigen CD42b-alpha, CD42b, Glycocalicin, GP1BA

**Target/Specificity**

This GP1BA(Glycocalicin) antibody is generated from a rabbit immunized with a KLH conjugated synthetic peptide between 344-378 amino acids from the Central region of human GP1BA(Glycocalicin).

**Dilution**

WB~~1:1000

**Format**

Purified polyclonal antibody supplied in PBS with 0.09% (W/V) sodium azide. This antibody is purified through a protein A column, followed by peptide affinity purification.

**Storage**

Maintain refrigerated at 2-8°C for up to 2 weeks. For long term storage store at -20°C in small aliquots to prevent freeze-thaw cycles.

**Precautions**

GP1BA(Glycocalicin) Antibody (Center) is for research use only and not for use in diagnostic or therapeutic procedures.

**GP1BA(Glycocalicin) Antibody (Center) - Protein Information**

**Name** GP1BA

**Function** GP-Ib, a surface membrane protein of platelets, participates in the formation of platelet plugs by binding to the A1 domain of vWF, which is already bound to the subendothelium.

### Cellular Location

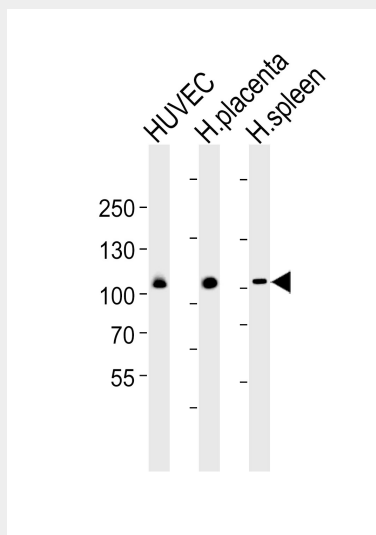
Membrane; Single-pass type I membrane protein.

### GP1BA(Glycocalicin) Antibody (Center) - Protocols

Provided below are standard protocols that you may find useful for product applications.

- [Western Blot](#)
- [Blocking Peptides](#)
- [Dot Blot](#)
- [Immunohistochemistry](#)
- [Immunofluorescence](#)
- [Immunoprecipitation](#)
- [Flow Cytometry](#)
- [Cell Culture](#)

### GP1BA(Glycocalicin) Antibody (Center) - Images



Western blot analysis of lysates from HUVEC cell line, human placenta and spleen tissue lysate (from left to right), using GP1BA(Glycocalicin) Antibody (Center) (Cat. #AP20720c). AP20720c was diluted at 1:1000 at each lane. A goat anti-rabbit IgG H&L(HRP) at 1:5000 dilution was used as the secondary antibody. Lysates at 35ug per lane.

### GP1BA(Glycocalicin) Antibody (Center) - Background

GP-Ib, a surface membrane protein of platelets, participates in the formation of platelet plugs by binding to the A1 domain of vWF, which is already bound to the subendothelium.

### GP1BA(Glycocalicin) Antibody (Center) - References

- Lopez J.A., et al. Proc. Natl. Acad. Sci. U.S.A. 84:5615-5619(1987).  
Wenger R.H., et al. Biochem. Biophys. Res. Commun. 156:389-395(1988).  
Matsubara Y., et al. Thromb. Haemost. 87:867-872(2002).  
Matsubara Y., et al. J. Thromb. Haemost. 1:2198-2205(2003).  
Titani K., et al. Proc. Natl. Acad. Sci. U.S.A. 84:5610-5614(1987).