

**(DANRE) fabp10a Antibody (N-term)**  
**Purified Rabbit Polyclonal Antibody (Pab)**  
**Catalog # AP20719a**

## Specification

---

### (DANRE) fabp10a Antibody (N-term) - Product Information

|                   |                        |
|-------------------|------------------------|
| Application       | WB,E                   |
| Primary Accession | <a href="#">O918L5</a> |
| Reactivity        | Zebrafish              |
| Host              | Rabbit                 |
| Clonality         | Polyclonal             |
| Isotype           | Rabbit IgG             |
| Antigen Region    | 30-63                  |

### (DANRE) fabp10a Antibody (N-term) - Additional Information

**Gene ID** 171481

#### Other Names

Fatty acid-binding protein 10-A, liver basic, Zf-FABP10, Zf-Lb-FABP, Fatty acid-binding protein, liver, Liver bile acid-binding protein, L-BABP, z-L-BABP, Liver-type fatty acid-binding protein, L-FABP, Liver-type FABP, fabp10a, fabp10

#### Target/Specificity

This (DANRE) fabp10a antibody is generated from a rabbit immunized with a KLH conjugated synthetic peptide between 30-63 amino acids of DANRE fabp10a.

#### Dilution

WB~~1:1000

#### Format

Purified polyclonal antibody supplied in PBS with 0.09% (W/V) sodium azide. This antibody is purified through a protein A column, followed by peptide affinity purification.

#### Storage

Maintain refrigerated at 2-8°C for up to 2 weeks. For long term storage store at -20°C in small aliquots to prevent freeze-thaw cycles.

#### Precautions

(DANRE) fabp10a Antibody (N-term) is for research use only and not for use in diagnostic or therapeutic procedures.

### (DANRE) fabp10a Antibody (N-term) - Protein Information

**Name** fabp10a

**Synonyms** fabp10

**Function** Binds hydrophobic ligands, such as cholate, in the cytoplasm. May be involved in intracellular lipid transport (By similarity). Binds one cholate per subunit.

#### **Cellular Location**

Cytoplasm.

#### **Tissue Location**

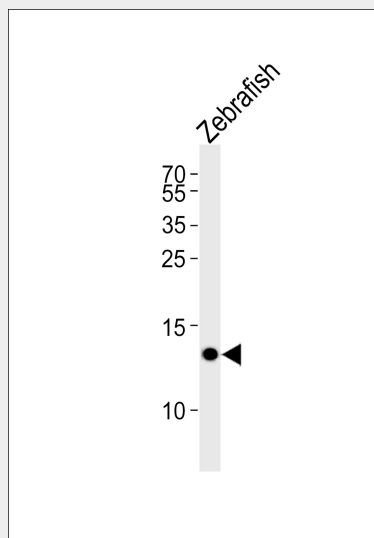
Expressed in the developing embryonic liver from 48 hpf. Also expressed in the liver of 5-day-old larvae. In adults, primarily expressed in the liver, with weak expression in the testis and intestine.

### **(DANRE) fabp10a Antibody (N-term) - Protocols**

Provided below are standard protocols that you may find useful for product applications.

- [Western Blot](#)
- [Blocking Peptides](#)
- [Dot Blot](#)
- [Immunohistochemistry](#)
- [Immunofluorescence](#)
- [Immunoprecipitation](#)
- [Flow Cytometry](#)
- [Cell Culture](#)

### **(DANRE) fabp10a Antibody (N-term) - Images**



Western blot analysis of lysate from Zebrafish tissue lysate, using (DANRE) fabp10a Antibody (N-term)(Cat. #AP20719a). AP20719a was diluted at 1:1000. A goat anti-rabbit IgG H&L(HRP) at 1:5000 dilution was used as the secondary antibody. Lysate at 35ug.

### **(DANRE) fabp10a Antibody (N-term) - Background**

Binds hydrophobic ligands, such as cholate, in the cytoplasm. May be involved in intracellular lipid transport (By similarity). Binds one cholate per subunit.

### **(DANRE) fabp10a Antibody (N-term) - References**

Denovan-Wright E.M., et al. *Biochim. Biophys. Acta* 1492:227-232(2000).

Her G.M.,et al.Dev. Dyn. 227:347-356(2003).  
Her G.M.,et al.FEBS Lett. 538:125-133(2003).  
Sharma M.K.,et al.FEBS J. 273:3216-3229(2006).  
Capaldi S.,et al.J. Biol. Chem. 282:31008-31018(2007).