

**IMMT Antibody (Center)**  
**Purified Rabbit Polyclonal Antibody (Pab)**  
**Catalog # AP20716c**

**Specification**

---

**IMMT Antibody (Center) - Product Information**

Application	WB,E
Primary Accession	<a href="#">Q16891</a>
Reactivity	Human
Host	Rabbit
Clonality	Polyclonal
Isotype	Rabbit IgG
Calculated MW	83678

**IMMT Antibody (Center) - Additional Information**

**Gene ID** 10989

**Other Names**

MICOS complex subunit MIC60, Cell proliferation-inducing gene 4/52 protein, Mitochondrial inner membrane protein, Mitofilin, p87/89, IMMT, HMP, MIC60, MINOS2

**Target/Specificity**

This IMMT antibody is generated from a rabbit immunized with a KLH conjugated synthetic peptide between 170-203 amino acids from the Central region of human IMMT.

**Dilution**

WB~~1:1000

**Format**

Purified polyclonal antibody supplied in PBS with 0.09% (W/V) sodium azide. This antibody is purified through a protein A column, followed by peptide affinity purification.

**Storage**

Maintain refrigerated at 2-8°C for up to 2 weeks. For long term storage store at -20°C in small aliquots to prevent freeze-thaw cycles.

**Precautions**

IMMT Antibody (Center) is for research use only and not for use in diagnostic or therapeutic procedures.

**IMMT Antibody (Center) - Protein Information**

**Name** IMMT

**Synonyms** HMP, MIC60, MINOS2

**Function** Component of the MICOS complex, a large protein complex of the mitochondrial inner

membrane that plays crucial roles in the maintenance of crista junctions, inner membrane architecture, and formation of contact sites to the outer membrane (PubMed:[22114354](#), PubMed:[25781180](#), PubMed:[32567732](#), PubMed:[33130824](#)). Plays an important role in the maintenance of the MICOS complex stability and the mitochondrial cristae morphology (PubMed:[22114354](#), PubMed:[25781180](#), PubMed:[32567732](#), PubMed:[33130824](#)).

#### Cellular Location

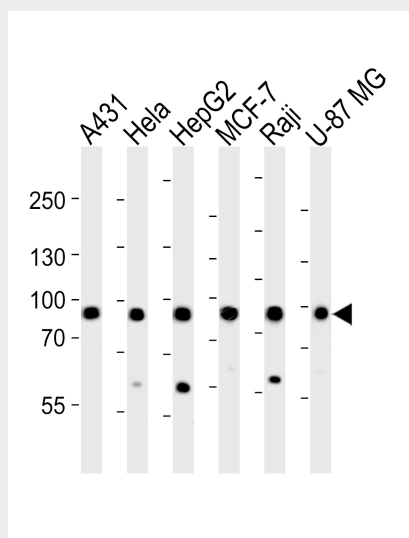
Mitochondrion inner membrane; Single-pass membrane protein. Mitochondrion

#### IMMT Antibody (Center) - Protocols

Provided below are standard protocols that you may find useful for product applications.

- [Western Blot](#)
- [Blocking Peptides](#)
- [Dot Blot](#)
- [Immunohistochemistry](#)
- [Immunofluorescence](#)
- [Immunoprecipitation](#)
- [Flow Cytometry](#)
- [Cell Culture](#)

#### IMMT Antibody (Center) - Images



Western blot analysis of lysates from A431, HeLa, HepG2, MCF-7, Raji, U-87 MG cell line (from left to right), using IMMT Antibody (Center)(Cat. #AP20716c). AP20716c was diluted at 1:1000 at each lane. A goat anti-rabbit IgG H&L(HRP) at 1:5000 dilution was used as the secondary antibody. Lysates at 35ug per lane.

#### IMMT Antibody (Center) - References

- Icho T.,et al.Gene 144:301-306(1994).  
Gieffers C.,et al.Exp. Cell Res. 232:395-399(1997).  
Ebert L.,et al.Submitted (JUN-2004) to the EMBL/GenBank/DDBJ databases.  
Ota T.,et al.Nat. Genet. 36:40-45(2004).  
Kim J.W.,et al.Submitted (FEB-2005) to the EMBL/GenBank/DDBJ databases.